

997-11-50

AGIP

OFFSHORE ITALIA
ZONA F

NW
3212

LINEA F.76-14

SE
2682

1 km

COMPAGNIE GENERALE
DE GEOPHYSIQUE

DIGITAL PROCESSING P5

TIME ORIGIN: Source and cable depth

STACK 4800%

Boat motion

637

Date: JUNE 9 '76

Checked
W

PROCESSING

SAMPLING RATE 4 ms

1 AMPLITUDE RECOVERY

2 WAPC stabilization by vaporchoc signal

3 MUTING

4 DECONVOLUTION 240 ms
WINDOW 500 - 2300 ms / Below
1500 - 3600 ms / Sea bottom

5 VELOCITY ANALYSIS (VA)

6 NMO CORRECTIONS
(LINEAR INTERPOLATION
BETWEEN VELOCITY FUNCTIONS)

7 STACK 4800 %

8 TIME VARIANT FILTER (Origin sea bottom)

9 TRACE EQUALIZATION

10 ANALOG DISPLAY

FIELD RECORDING

SAMPLING RATE 4 ms

Ship GLORITA TIDE Shooting date JAN/1976

Field recorder SN 338 Filter 1/8-125

Floating point sampling 4 ms

Streamer 2400 m (depth 19 m)

groups 48 (group interval 50 m)

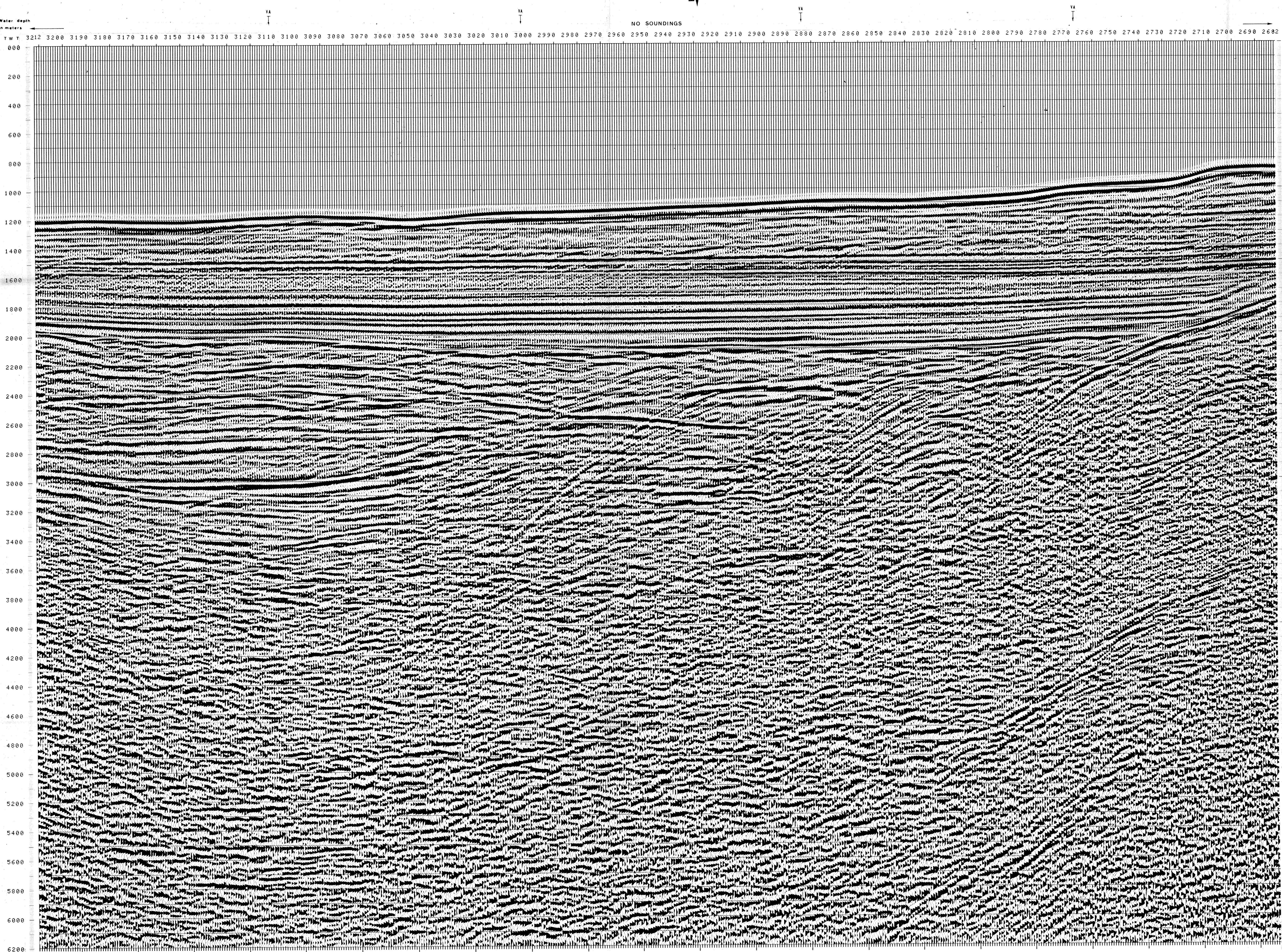
Geophones type HC201 n° 48 / group

48fold coverage

Energy source VAPORCHOC (Depth: 1.48
5' Tr Streamer 1.48
310m SHORAN positioning

00091

F.76.29
1976



TWT	3111*	3003*	2883*	2766*	2652*
000					
200	1500	1500	1500	1500	1500
400	1500	1500	1500	1500	1500
600	1500	1500	1500	1500	1500
800	1500	1500	1500	1500	1500
1000	1500	1500	1500	1500	1525
1200	1500	1511	1532	1527	1577
1400	1536	1569	1583	1609	1614
1600	1608	1653	1627	1662	1750
1800	1689	1708	1688	1677	2236
2000	1759	1772	1773	1781	2673
2200	1826	1842	1876	1907	3030
2400	1876	1921	1981	2193	3327
2600	1938	1992	2182	2532	3579
2800	2016	2082	2336	2822	3795
3000	2166	2233	2539	3074	3982
3200	2428	2375	2793	3294	4145
3400	2677	2499	3017	3489	4290
3600	2898	2623	3216	3662	4416
3800	3093	3007	3398	3816	4533
4000	3268	3244	3554	3955	4636
4200	3427	3403	3699	4081	4730
4400	3571	3549	3831	4196	4815
4600	3703	3681	3952	4300	4892
4800	3823	3803	4062	4396	4963
5000	3934	3915	4163	4484	5029
5200	4037	4018	4257	4566	5089
5400	4132	4114	4344	4641	5145
5600	4220	4202	4424	4711	5197
5800	4302	4285	4499	4776	5245
6000	4374	4362	4569	4837	5291
6200	4450	4434	4635	4894	5333

VARIABLE FILTER
997.11.50
VII