

997-11-50

AGIP

OFFSHORE ITALIA
ZONA F

NW
1400

SE
841

LINEA F.76.14

1 km

COMPAGNIE GENERALE
DE GÉOPHYSIQUE

DIGITAL PROCESSING P5

TIME ORIGIN: Source and cable depth

STACK 4800%

Boat motion

634 Date: JUNE 9.76 Checked

PROCESSING
SAMPLING RATE 4ms

- AMPLITUDE RECOVERY
- WAPCO stabilization by vapochoc signal
- NOISE
- DECONVOLUTION 240 ms
WIRE 1: 500 2300 ms J 81m
1900 2400 ms I 81m
- VELOCITY ANALYSIS (VA)
LINEAR INTERPOLATION
BETWEEN VELOCITY FUNCTIONS
- STACK 4800%
- TIME VARIANT FILTER (origin sea bottom)
- TRACE EQUALIZATION
- ANALOG DISPLAY

FIELD RECORDING
SAMPLING RATE 4ms

Ship: GLORITA TIDE Shooting date: JAN (1976)

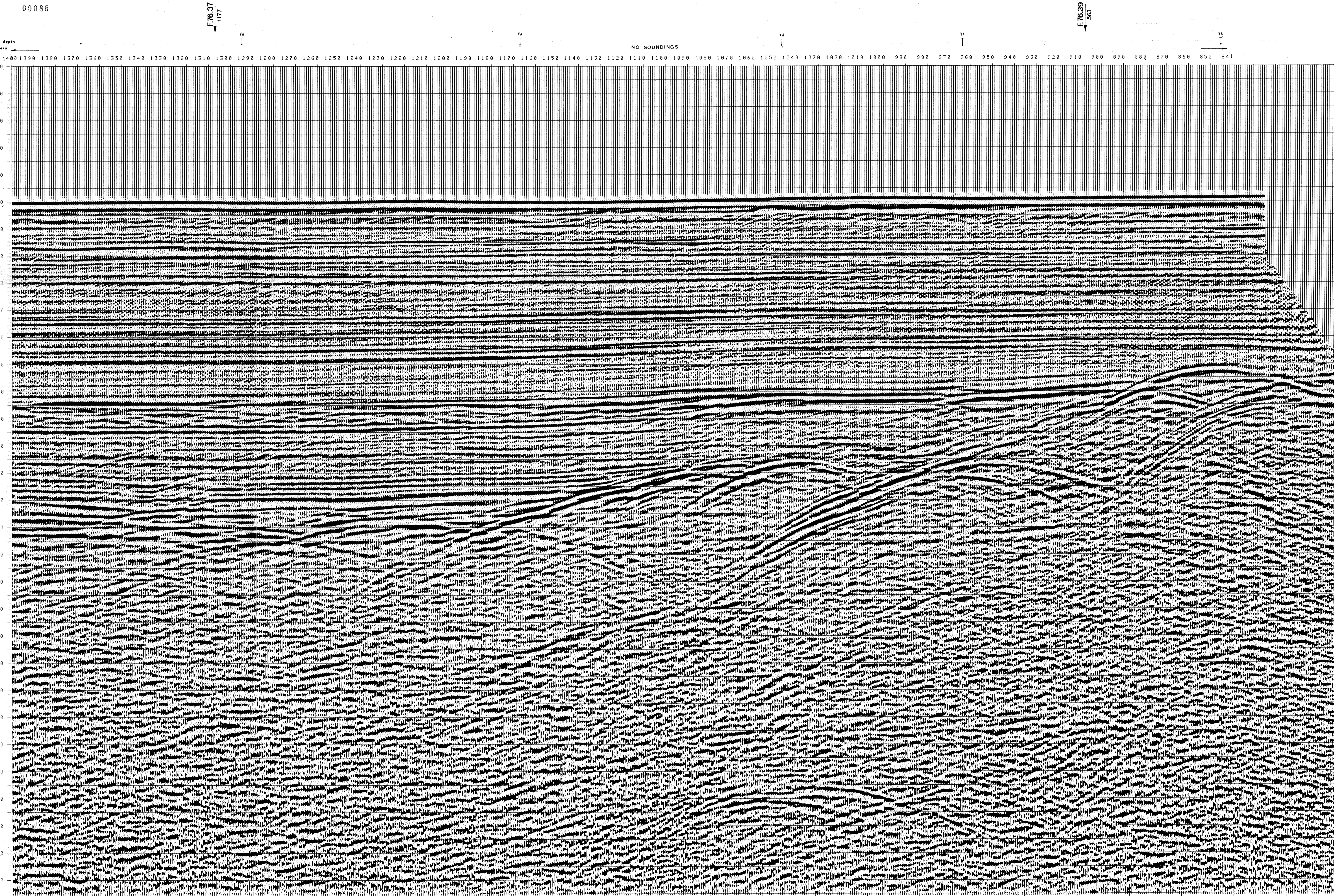
Field recorder: SN 338 filter VB-125
Floating point, sampling 4 ms

Streamer: 2400 m (Depth: 19 m)
groups 48 (group interval 50 m)

Geophones type: HC 201 n° 48 / group
48 fold coverage

Energy source: VAPORCHOC (Depth: 6 m)
31' 1" Streamer 1' 48"

310m SHORAN positioning



VARIABLE FILTER

997-11-50

Frequency in Hz

TWT	1426*	1294*	1166*	1046*	963*	794*
	TO SP *	TO SP *	TO SP *	TO SP *	TO SP *	TO SP *
	1426*	1294*	1166*	1046*	963*	842*
	AV. VEL. *	AV. VEL. *	AV. VEL. *	AV. VEL. *	AV. VEL. *	AV. VEL. *
	IN M/S*	IN M/S*	IN M/S*	IN M/S*	IN M/S*	IN M/S*
000						
200	1500	1500	1500	1500	1500	1500
400	1500	1500	1500	1500	1500	1500
600	1500	1500	1500	1500	1500	1500
800	1500	1500	1500	1500	1500	1500
1000	1500	1500	1500	1500	1500	1500
1200	1532	1517	1530	1548	1540	1528
1400	1561	1562	1565	1581	1572	1557
1600	1655	1631	1661	1675	1688	1661
1800	1715	1761	1714	1685	1779	1727
2000	1767	1793	1803	1765	1835	1849
2200	1863	1890	1908	1867	1920	1957
2400	1981	1974	2011	1976	2085	2091
2600	2067	2082	2099	2098	2130	2210
2800	2149	2186	2164	2214	2254	2509
3000	2219	2279	2216	2320	2449	2679
3200	2300	2374	2407	2579	2750	3112
3400	2374	2495	2754	2902	2976	3317
3600	2608	2708	3317	3136	3178	3499
3800	2817	2899	3614	3320	3358	3663
4000	3006	3684	3763	3464	3528	3809
4200	3177	3252	3898	3633	3666	3942
4400	3333	3404	4021	3767	3800	4063
4600	3475	3543	4133	3891	3921	4173
4800	3605	3670	4236	4003	4033	4274
5000	3725	3787	4331	4107	4136	4367
5200	3835	3896	4416	4203	4230	4453
5400	3938	3996	4499	4292	4316	4533
5600	4033	4089	4574	4374	4400	4607
5800	4121	4175	4644	4451	4476	4675
6000	4204	4256	4709	4523	4546	4739