

997-11.50

AGIP

OFFSHORE ITALIA  
ZONA F

SW 1240 LINEA F-76-11 NE 601

DIGITAL PROCESSING P5

TIME ORIGIN: Source and cable depth

STACK 4800%

Boat motion

625 Date: JUNE 9, 76 Checked: [initials]

PROCESSING SAMPLING RATE 4ms

- AMPLITUDE RECOVERY
- WAPFO stabilization by vaporchoc signal
- MIXING
- DECONVOLUTION 240 ms  
MIXERS: 500-2300 ms J below  
1800-3600 ms J sea bottom
- VELOCITY ANALYSIS (VA)  
NMO CORRECTIONS  
(LINEAR INTERPOLATION BETWEEN VELOCITY FUNCTIONS)
- STACK 4800%
- TIME VARIANT FILTER (Origin sea bottom)
- TRACE EQUALIZATION
- ANALOG DISPLAY

FIELD RECORDING SAMPLING RATE 4ms

Ship: GLORITA TIDE Shooting date: JAN/1976

Field recorder: SN 338 filter: V8 125

Floating point: sampling 4 ms

Streamer: 2400 m (Depth: 18 m)

groups: 48 (group interval: 50 m)

Geophones type: HC 201 n: 48 / group

48Fold coverage

Energy source: VAPORCHOC (Depth: m)

SP: 111 Streamer: 1148

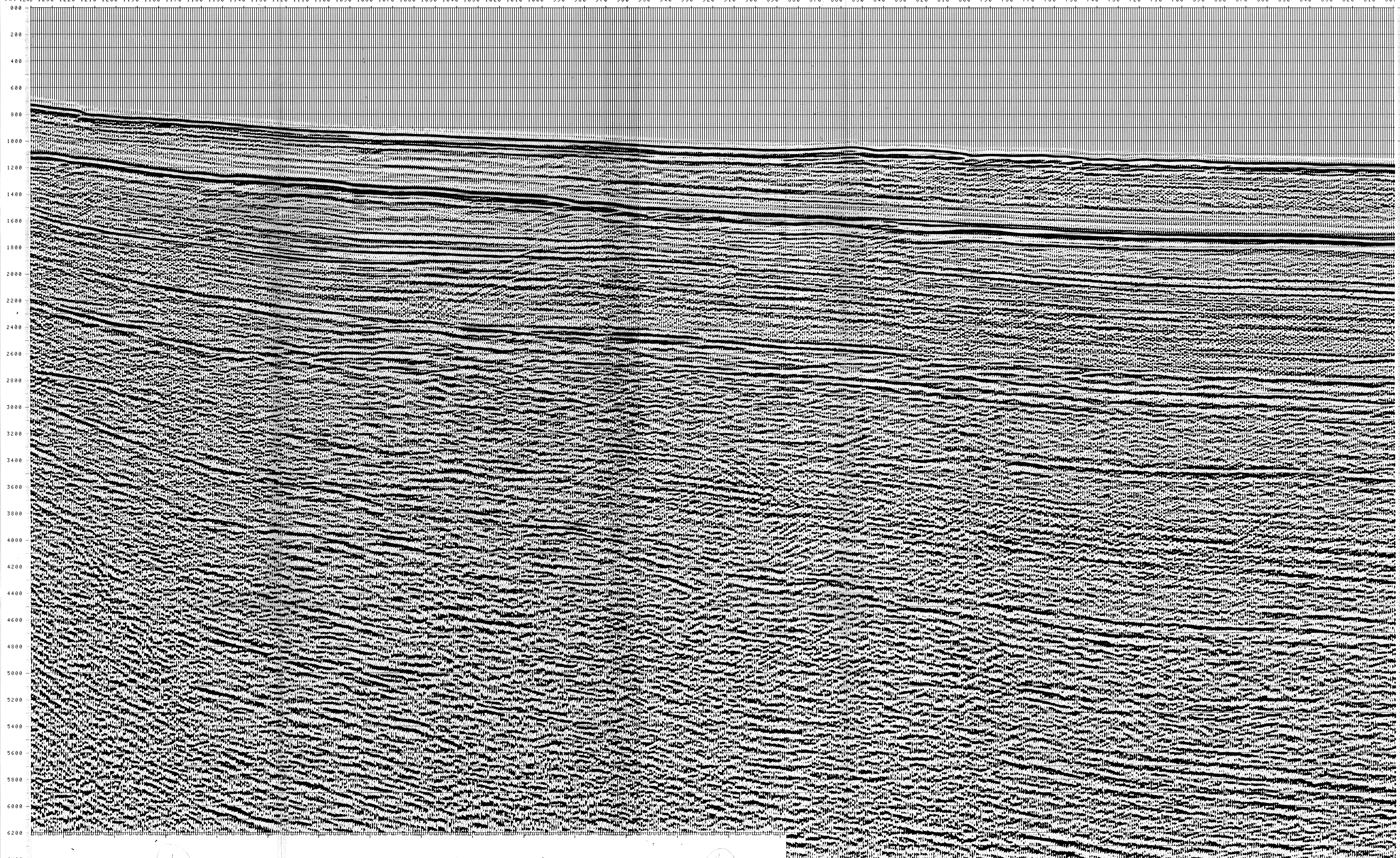
335m SHORAN positioning

00066

F76.08  
1199

NO SOUNDINGS

TWT 1240 1230 1220 1210 1200 1190 1180 1170 1160 1150 1140 1130 1120 1110 1100 1090 1080 1070 1060 1050 1040 1030 1020 1010 1000 990 980 970 960 950 940 930 920 910 900 890 880 870 860 850 840 830 820 810 800 790 780 770 760 750 740 730 720 710 700 690 680 670 660 650 640 630 620 610 601



*FROM SP*FROM SP*FROM SP*FROM SP*FROM SP*FROM SP*FROM SP*FROM SP*FROM SP*									
1240	1230	1220	1210	1200	1190	1180	1170	1160	1150
TO SP	TO SP	TO SP	TO SP	TO SP	TO SP	TO SP	TO SP	TO SP	TO SP
1240	1230	1220	1210	1200	1190	1180	1170	1160	1150
IN M/S	IN M/S	IN M/S	IN M/S	IN M/S	IN M/S	IN M/S	IN M/S	IN M/S	IN M/S
1500	1500	1500	1500	1500	1500	1500	1500	1500	1500
1500	1500	1500	1500	1500	1500	1500	1500	1500	1500
1500	1500	1500	1500	1500	1500	1500	1500	1500	1500
1514	1500	1500	1500	1500	1500	1500	1500	1500	1500
1575	1624	1500	1500	1500	1500	1500	1500	1500	1500
1700	1727	1640	1561	1543	1513	1509	1500		
1980	1917	1850	1817	1547	1575	1572	1543		
2090	2041	1769	1725	1659	1651	1691	1586		
2250	2182	1924	1863	1767	1753	1763	1670		
2404	2353	2071	2040	1800	1854	1854	1771		
2705	2595	2305	2274	2030	1942	1930	1853		
2900	2800	2526	2506	2170	2045	2070	1982		
3212	3257	2765	2661	2310	2200	2183	2119		
3411	3453	2998	2825	2406	2392	2318	2245		
3584	3623	3200	3066	2602	2671	2511	2452		
3735	3771	3375	3172	3103	2916	2600	2415		
3608	3593	3550	3321	3325	3110	2632	2753		
3566	4019	3667	3470	3517	3270	2988	2927		
4192	4123	3750	3603	3648	3414	3118	3080		
4188	4217	3960	3723	3765	3543	3262	3234		
4274	4302	4000	3831	3872	3600	3390	3306		
4352	4379	4091	3930	3968	3767	3511	3465		
4424	4450	4174	4020	4057	3804	3619	3595		
4490	4514	4250	4102	4138	3953	3718	3695		
4550	4574	4310	4170	4212	4034	3805	3707		
4606	4628	4385	4240	4281	4110	3894	3872		
4657	4679	4444	4313	4344	4100	3972	3951		
4705	4720	4500	4373	4404	4245	4044	4024		
4750	4770	4552	4430	4459	4306	4112	4092		
4792	4811	4600	4482	4510	4362	4174	4150		
4831	4850	4646	4531	4556	4415	4233	4215		
4867	4886	4687	4577	4603	4464	4289	4271		

VARIABLE FILTER

997-11.50

VII

FREQUENCY (Hz)

0 2 4 6 8 10