

997-11-50

AGIP

OFFSHORE ITALIA
ZONA F

SW 600 LINEA F.76-11 NE 1

DIGITAL PROCESSING P5

TIME ORIGIN: Source and cable depth

STACK 4800%

Boat motion

624 Date: JUNE 9 '76 Checked

PROCESSING
SAMPLING RATE 4ms

1. AMPLITUDE RECOVERY
2. WAPCO (stabilization by vaporchoc signal)
3. NOTING
4. DECONVOLUTION 240 ms
WATERWAY 500 - 2300 ms / Below
1900 - 3600 ms / Sea bottom
5. VELOCITY ANALYSIS (VA)
6. NMO CORRECTIONS
LINEAR INTERPOLATION
BETWEEN VELOCITY FUNCTIONS
7. STACK 4800 %
8. TIME VARIANT FILTER (origin sea bottom)
9. TRACE EQUALIZATION
10. ANALOG DISPLAY

FIELD RECORDING
SAMPLING RATE 4ms

Ship GLORITA TIDE Shooting date JAN 1976

Field recorder SN 338 filter VB 125

Floating point sampling 4 ms

Streamer 2400m (depth 18 m)

groups 48 (group interval 50 m)

Geophones type HC 201 n° 48 / group

48Fold coverage

Energy source VAPORCHOC (depth 6 m)

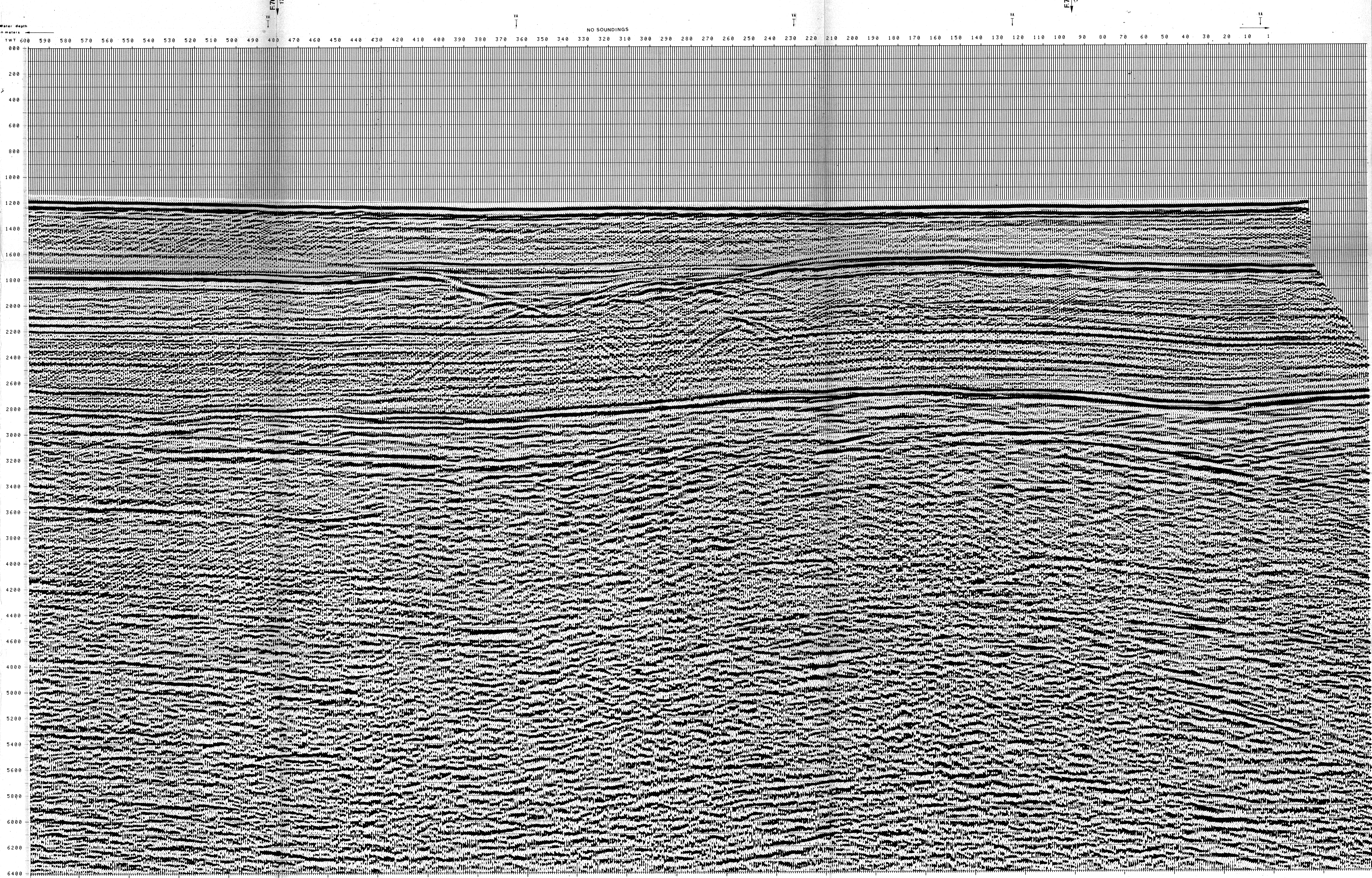
SP 1/3 Streamer 1/40

335m SHORAN positioning

00065

F76 06
1780

F76 04
3543



TWT	*FROM SP*FROM SP*FROM SP*FROM SP*FROM SP*FROM SP*					
	60*	48*	36*	23*	12*	14
	TO SP	TO SP	TO SP	TO SP	TO SP	TO SP
	60*	48*	36*	23*	12*	14
	AV. VEL.	AV. VEL.	AV. VEL.	AV. VEL.	AV. VEL.	AV. VEL.
	IN M/S	IN M/S	IN M/S	IN M/S	IN M/S	IN M/S
000						
200	1500	1500	1500	1500	1500	1500
400	1500	1500	1500	1500	1500	1500
600	1500	1500	1500	1500	1500	1500
800	1500	1500	1500	1500	1500	1500
1000	1500	1500	1500	1500	1500	1500
1200	1509	1500	1500	1500	1500	1500
1400	1572	1549	1592	1914	1550	1536
1600	1691	1566	1616	1579	1596	1567
1800	1783	1670	1666	1646	1672	1643
2000	1854	1771	1726	1721	1752	1732
2200	1936	1853	1764	1798	1842	1849
2400	2076	1982	1914	1915	1963	1973
2600	2183	2119	2043	2061	2092	2096
2800	2318	2245	2193	2239	2296	2257
3000	2511	2452	2361	2442	2732	2550
3200	2680	2615	2479	2617	3003	2801
3400	2832	2753	2956	2747	3443	2989
3600	2968	2927	3125	2863	3585	3156
3800	3118	3088	3276	3013	3712	3306
4000	3262	3234	3412	3163	3827	3440
4200	3392	3366	3536	3298	3930	3562
4400	3511	3485	3648	3426	4024	3673
4600	3619	3595	3750	3533	4110	3774
4800	3718	3695	3844	3635	4189	3867
5000	3809	3787	3936	3730	4261	3952
5200	3894	3872	4029	3817	4328	4031
5400	3972	3951	4083	3898	4390	4104
5600	4044	4024	4152	3973	4447	4172
5800	4112	4092	4215	4043	4501	4235
6000	4174	4156	4275	4108	4551	4293
6200	4233	4215	4330	4169	4598	4348
6400	4289	4271	4383	4226	4641	4400

VARIABLE FILTER

997-11-50

VII

Frequency in Hz