

997-11-50

AGIP

OFFSHORE ITALIA  
ZONA F

DIGITAL PROCESSING P5

TIME ORIGIN: Source and cable depth

STACK 4800%

Boat motion

571

Date: MAY 21 '76

Checked

RT

PROCESSING  
SAMPLING RATE 4 ms

- 1 AMPLITUDE RECOVERY
- 2 WAPCO (stabilization by vaporchoc signal)
- 3 MUTING
- 4 DECONVOLUTION 240 ms  
Windows 500-2300 ms J Below  
1900-3600 ms I sea bottom
- 5 VELOCITY ANALYSIS (VA)
- 6 RMS CORRECTIONS  
(LINEAR INTERPOLATION  
BETWEEN VELOCITY FUNCTIONS)

- 7 STACK 4800%
- 8 TIME VARIANT FILTER (Origin sea bottom)
- 9 TRACE EQUALIZATION
- 10 ANALOG DISPLAY

FIELD RECORDING  
SAMPLING RATE 4 ms

Ship GLORITA TIDE Shooting date JAN 1976  
Field recorder SN 338 filter 1/8 125  
Floating point, sampling 4 ms  
Streamer 2400 m (depth 20 m)  
groups 48 (group interval 50 m)  
Geophones type HC 201 n° 48 / group  
48Fold coverage  
Energy source VAPORCHOC (depth 6 m)  
SP Tr1 Streamer Tr48  
315m SHORAN positioning

SW  
1740

LINEA F.76.09

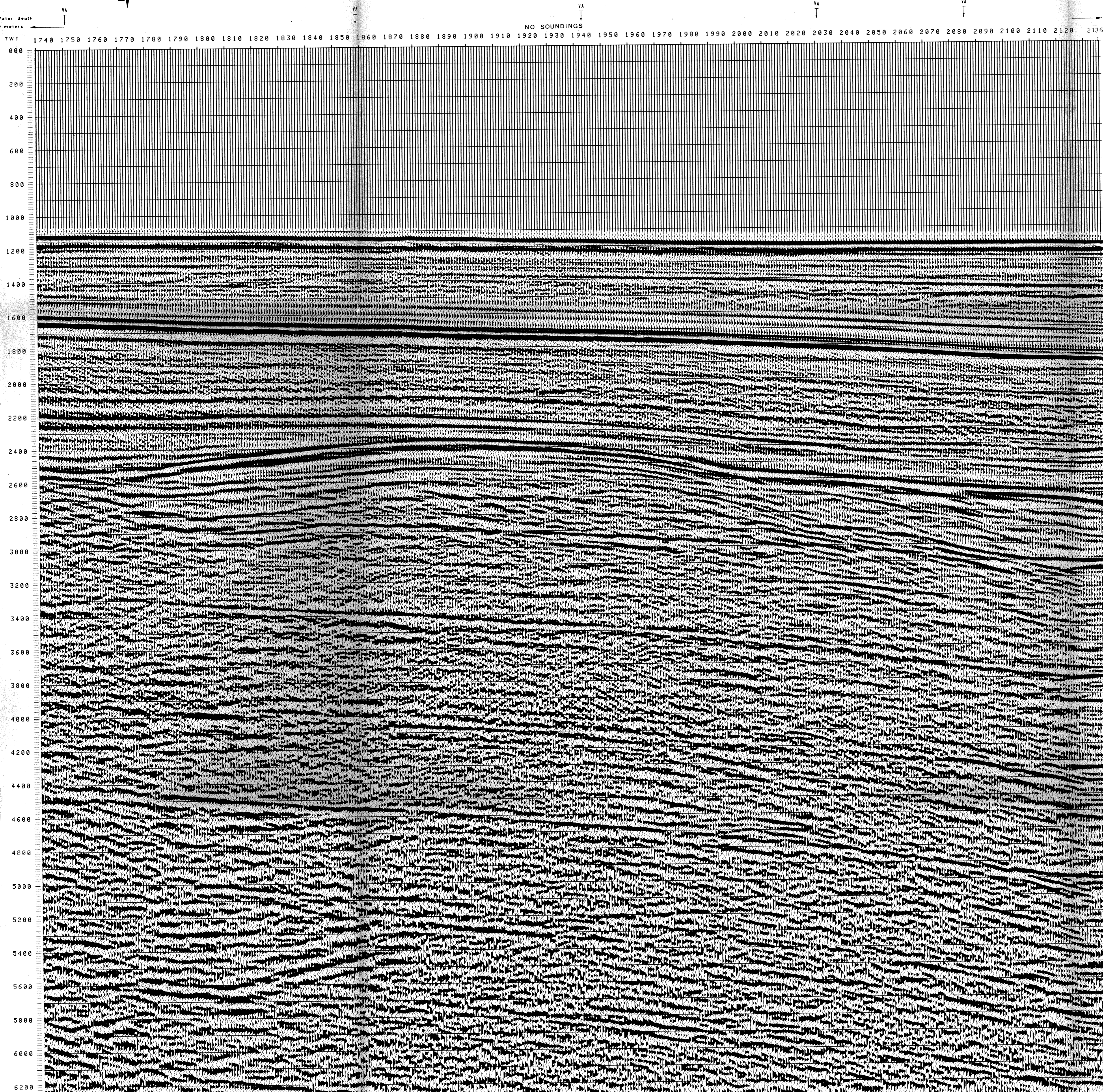
NE  
2136

1 km

COMPAGNIE GENERALE  
DE GÉOPHYSIQUE

00051

F76.04  
3957



TWT	*FROM SP*FROM SP*FROM SP*			VARIABLE FILTER		
	1376*	2030*	2085*	997-11-50 VII		
	TO SP*	TO SP*	TO SP*	Frequency in Hz		
	1425*	2030*	2136*	0 5 10 15 20 25 30 35 40 45 50 55 60		
	AV. VEL. IN M/S*	AV. VEL. IN M/S*	AV. VEL. IN M/S*			
000						
200	1500	1500	1500			
400	1500	1500	1500			
600	1500	1500	1500			
800	1500	1500	1500			
1000	1500	1500	1500			
1200	1528	1511	1507			
1400	1548	1564	1515			
1600	1599	1622	1570			
1800	1717	1683	1655			
2000	1850	1760	1767			
2200	1973	1848	1871			
2400	2112	1945	1981			
2600	2311	2066	2086			
2800	2642	2494	2347			
3000	2999	2906	2671			
3200	3167	3100	2908			
3400	3352	3270	3090			
3600	3500	3422	3252			
3800	3631	3558	3396			
4000	3750	3680	3526			
4200	3857	3790	3644			
4400	3954	3891	3751			
4600	4043	3982	3849			
4800	4125	4066	3939			
5000	4199	4144	4021			
5200	4269	4215	4097			
5400	4333	4281	4168			
5600	4392	4343	4233			
5800	4448	4400	4294			
6000	4500	4453	4351			
6200	4548	4503	4404			