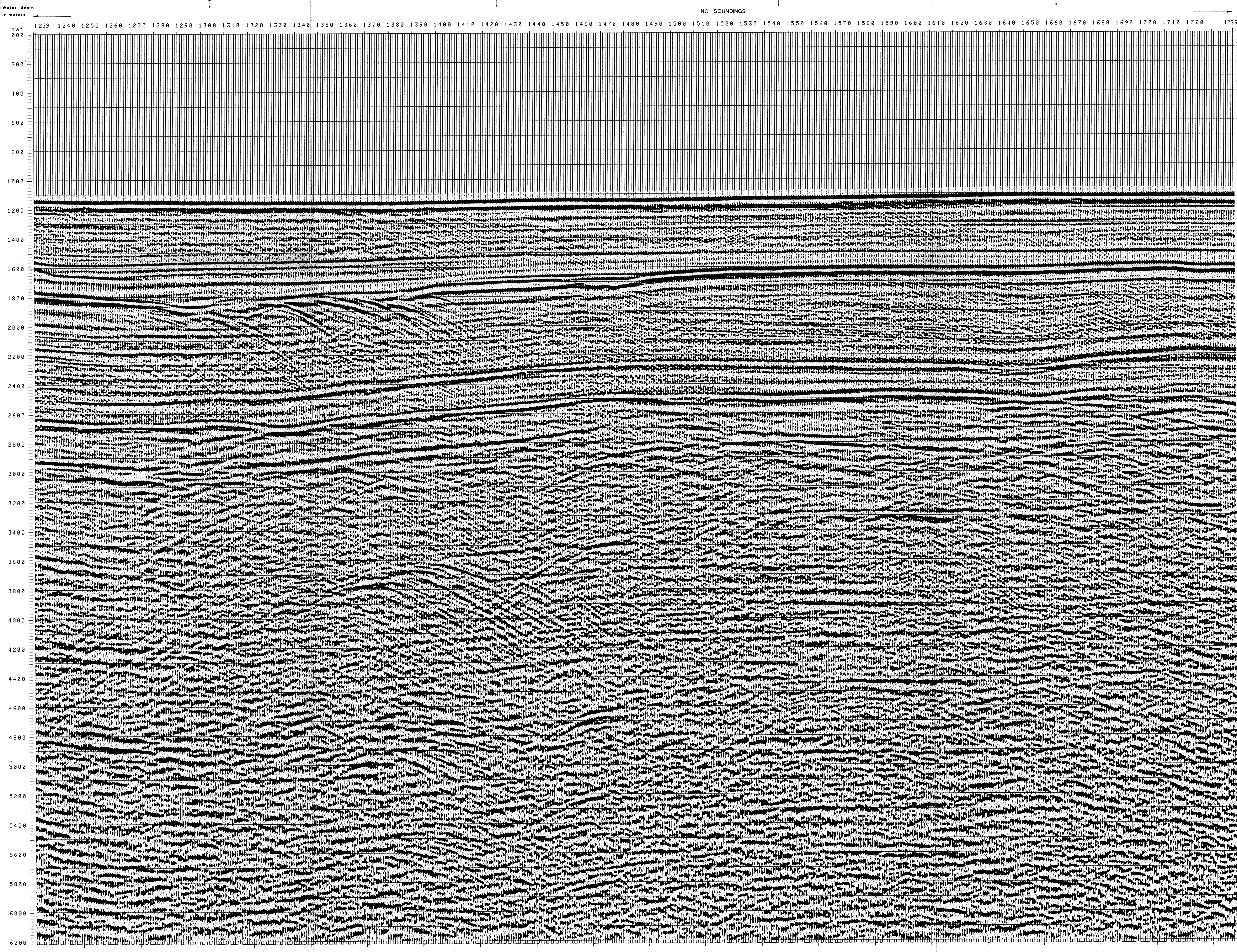


997-11-50	<b>AGIP</b>	PROCESSING SAMPLING RATE 4ms	FIELD RECORDING SAMPLING RATE 4ms
OFFSHORE ITALIA ZONA F	DIGITAL PROCESSING P5	1. AMPLITUDE RECOVERY	Ship: GLORITA TIDE Shooting date: JAN 1976
SW 1229 LINEA F.76.09 NE 1739	TIME ORIGIN: Source and cable depth	2. WAPCO (stabilization by vibrator signal)	Field recorder: SN 338 filter: V8 125
1 km	STACK 4800%	3. MUTING	Floating point: sampling 4 ms
COMPAGNIE GENERALE DE GEOPHYSIQUE	Boat motion	4. DECONVOLUTION 240 ms windows 800 - 2300 ms ↓ Below 1800 - 2600 ms ↓ Sea bottom	Streamer 2400 m (depth 19 m) groups 48 (group interval 50 m)
570	Date: MAY 21 '76 Checked	5. VELOCITY ANALYSIS (VA) LINEAR INTERPOLATION BETWEEN VELOCITY FUNCTIONS	Geophones type HC 201 n° 48 / group
		6. NMO CORRECTIONS	48Fold coverage
			Energy source VAPORCHOC (depth 6 m)
			SP 371 Streamer 1748
			335m SHORAN positioning

00050

F76.06  
10500

NO SOUNDINGS



TWT 000	*FROM SP*FROM SP*FROM SP*FROM SP*				*AV. VEL.*AV. VEL.*AV. VEL.*AV. VEL.*				VARIABLE FILTER
	1197*	1303*	1376*	2030*	IN M/S*	IN M/S*	IN M/S*	IN M/S*	
000									
200	1500	1500	1500	1500					
400	1500	1500	1500	1500					
600	1500	1500	1500	1500					
800	1500	1500	1500	1500					
1000	1500	1500	1500	1500					
1200	1534	1529	1528	1511					
1400	1577	1569	1548	1504					
1600	1700	1612	1599	1622					
1800	1853	1686	1717	1683					
2000	1905	1603	1850	1760					
2200	1997	1884	1973	1848					
2400	2149	2056	2112	1945					
2600	2352	2199	2311	2066					
2800	2640	2457	2642	2494					
3000	2879	2847	2999	2906					
3200	3074	3044	3187	3100					
3400	3247	3218	3352	3270					
3600	3399	3372	3500	3422					
3800	3536	3511	3631	3558					
4000	3659	3635	3750	3680					
4200	3771	3748	3857	3790					
4400	3872	3850	3954	3891					
4600	3965	3943	4043	3982					
4800	4049	4029	4125	4066					
5000	4127	4108	4199	4144					
5200	4199	4181	4269	4215					
5400	4266	4248	4333	4281					
5600	4328	4311	4392	4343					
5800	4386	4369	4446	4400					
6000	4439	4423	4500	4453					
6200	4490	4474	4548	4503					