

997-11-50 **AGIP**

OFFSHORE ITALIA
ZONA F

NW 3990 LINEA F.76.08 SE 4494

1 km

COMPAGNIE GÉNÉRALE DE GÉOPHYSIQUE

DIGITAL PROCESSING P5
TIME ORIGIN: Source and cable depth
STACK 4800 %
Boat motion

591 Date: JUNE 2 '76 Checked: *RM*

PROCESSING
SAMPLING RATE 4ms

- AMPLITUDE RECOVERY
- WAPCO stabilization by vaporchoc signal
- MUTING
- DECONVOLUTION 240 ms
Windows 200 3200 ms / Below 1900 3600 ms / sea bottom
- VELOCITY ANALYSIS (VA)
6 NMO CORRECTIONS
(LINEAR INTERPOLATION BETWEEN VELOCITY FUNCTIONS)
- STACK 4800 %
- TIME VARIANT FILTER (Origin sea bottom)
- TRACE EQUALIZATION
- ANALOG DISPLAY

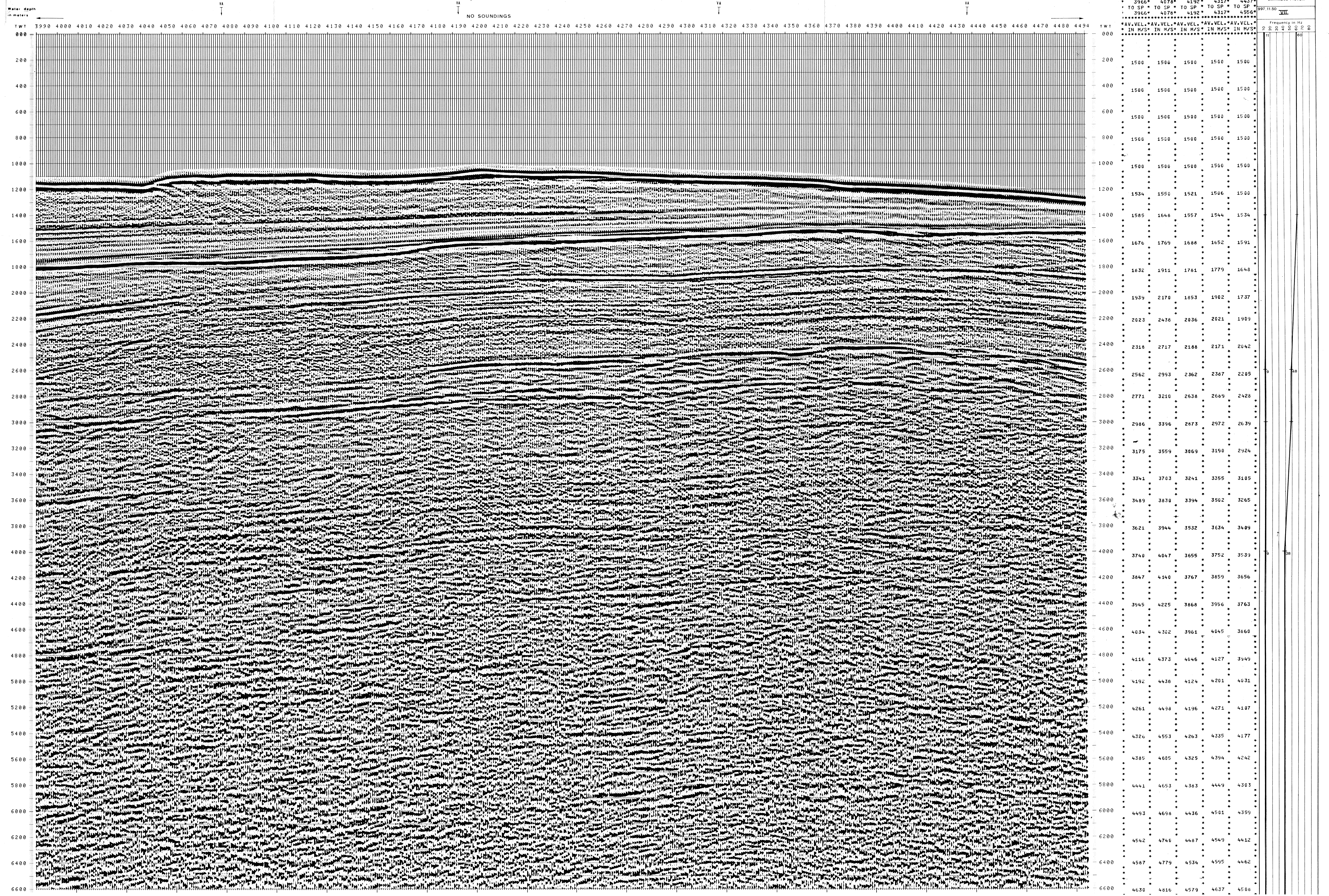
FIELD RECORDING
SAMPLING RATE 4ms

Ship GLORITA TIDE Shooting date: FEB/1976
Field recorder SN 338 filter VB 125
Floating point - sampling 4 ms
Streamer 2400 m (depth 20 m)
Groups 48 (group interval 50 m)
Geophones type HC 201 n° 48 / group
48Fold coverage
Energy source VAPORCHOC (Depth: 310m Streamer 148)
SHORAN positioning

00043

F.76.11
866

NO SOUNDINGS



*FROM SP*FROM SP*FROM SP*FROM SP*					*AV.VEL.*AV.VEL.*AV.VEL.*AV.VEL.*					VARIABLE FILTER	
3966*	4078*	4192*	4317*	4427*	3966*	4078*	4192*	4317*	4427*	997.11.50	VII
TO SP *	TO SP *	TO SP *	TO SP *	TO SP *	IN M/S*	IN M/S*	IN M/S*	IN M/S*	IN M/S*	Frequency in Hz	50 100 200 300 400 500 600
1500	1500	1500	1500	1500							
1500	1500	1500	1500	1500							
1500	1500	1500	1500	1500							
1500	1500	1500	1500	1500							
1534	1550	1521	1506	1500							
1585	1648	1557	1544	1534							
1676	1769	1688	1652	1591							
1632	1911	1761	1779	1648							
1939	2170	1853	1902	1737							
2023	2436	2036	2021	1909							
2318	2717	2188	2171	2042							
2562	2953	2362	2387	2205							
2771	3210	2638	2669	2428							
2986	3396	2873	2972	2639							
3175	3559	3069	3190	2924							
3341	3703	3241	3355	3105							
3489	3830	3394	3502	3265							
3621	3944	3532	3634	3409							
3740	4047	3655	3752	3539							
3847	4140	3767	3859	3656							
3945	4225	3868	3956	3763							
4034	4302	3961	4045	3860							
4116	4373	4046	4127	3949							
4192	4438	4124	4201	4031							
4261	4498	4196	4271	4107							
4326	4553	4263	4335	4177							
4385	4605	4325	4394	4242							
4441	4653	4383	4449	4303							
4493	4698	4436	4501	4359							
4542	4746	4487	4549	4412							
4587	4779	4534	4595	4462							
4630	4816	4579	4637	4508							