

997-11-50

AGIP

OFFSHORE ITALIA  
ZONA F

SW 1296 LINEA F-76-07 NE 601

DIGITAL PROCESSING P5

TIME ORIGIN: Source and cable depth

STACK 4800'

Boat motion

687 Date: JUNE 18, 76 Checked

PROCESSING  
SAMPLING RATE 4ms

- AMPLITUDE RECOVERY
- WAPFO stabilization by vaporchoc signal
- WETTING
- DECONVOLUTION 240 ms  
windows: 500 1200 ms J. Exit  
1900 3600 ms Sea bottom
- VELOCITY ANALYSIS (VA)  
LINEAR INTERPOLATION  
BETWEEN VELOCITY FUNCTIONS
- 4MS CORRECTIONS
- STACK 4800'
- TIME VARIANT FILTER (origin sea bottom)
- TRACE EQUALIZATION
- ANALOG DISPLAY

FIELD RECORDING  
SAMPLING RATE 4ms

Ship: GLORITA TIDE Shooting date: JAN 1976

Field recorder: SN 338 filter: UB 125

Floating point: sampling 4 ms

Streamer: 2400 m (depth 18 m)

groups: 48 (group interval 50 m)

Geophones type: HC 201 n° 48 / group

48Fold coverage

Energy source: VAPORCHOC (Depth:)

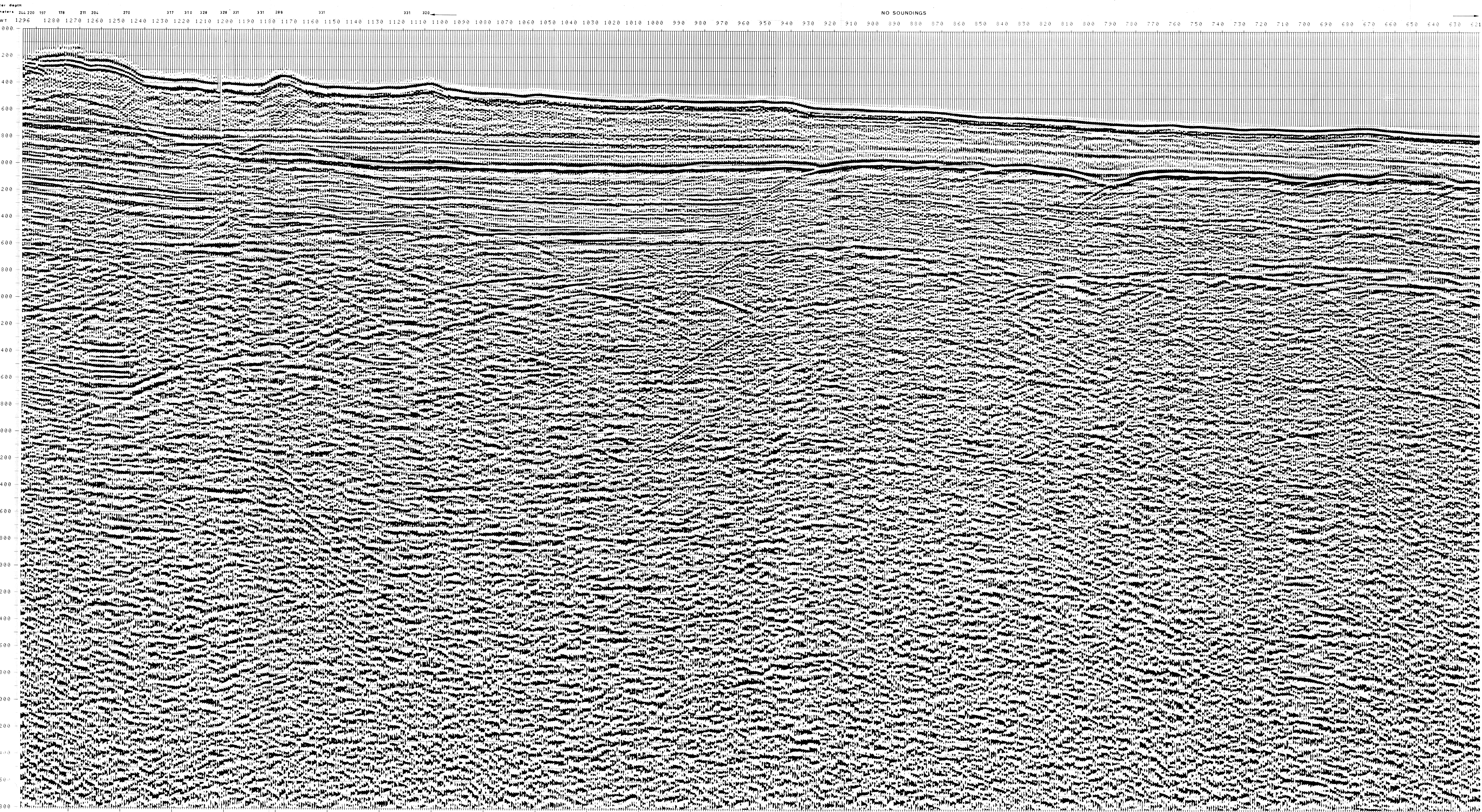
SP Tri Streamer 148

335m SHORAN positioning

00034

F76-10  
384

F76-08  
3895



NO SOUNDINGS	1296	1232	1136	1040	920	800	680	531
AV. VEL. IN M/S	AV. VEL. IN M/S	AV. VEL. IN M/S	AV. VEL. IN M/S	AV. VEL. IN M/S	AV. VEL. IN M/S	AV. VEL. IN M/S	AV. VEL. IN M/S	AV. VEL. IN M/S
0.00								
200	1500	1500	1500	1500	1500	1500	1500	1500
400	1557	1557	1500	1500	1500	1500	1500	1500
600	1838	1838	1684	1591	1520	1500	1500	1500
800	1989	1989	1790	1741	1549	1547	1549	1529
1000	2166	2166	1894	1835	1776	1692	1617	1619
1200	2358	2358	2091	2069	2068	1907	1742	1684
1400	2524	2524	2367	2245	2263	2104	1873	1814
1600	2701	2701	2585	2438	2399	2323	2089	2028
1800	2854	2854	2752	2697	2753	2699	2321	2250
2000	3197	3197	2885	2996	3074	2999	2685	2476
2200	3506	3506	3223	3324	3394	3327	2991	2777
2400	3764	3764	3504	3597	3661	3599	3292	3037
2600	3982	3982	3743	3828	3887	3830	3546	3311
2800	4169	4169	3947	4026	4081	4028	3764	3546
3000	4331	4331	4123	4197	4249	4199	3953	3749
3200	4473	4473	4278	4347	4396	4349	4119	3928
3400	4598	4598	4415	4480	4526	4482	4265	4085
3600	4709	4709	4526	4598	4641	4599	4394	4224
3800	4809	4809	4645	4703	4744	4705	4510	4349
4000	4898	4898	4742	4798	4837	4799	4615	4462
4200	4979	4979	4831	4884	4921	4885	4709	4564
4400	5053	5053	4911	4962	4997	4963	4795	4656
4600	5120	5120	4985	5033	5067	5034	4874	4741
4800	5182	5182	5052	5098	5130	5099	4946	4818
5000	5238	5238	5114	5158	5189	5159	5012	4889
5200	5291	5291	5171	5214	5243	5215	5073	4955
5400	5339	5339	5224	5265	5294	5266	5129	5016
5600	5384	5384	5273	5313	5340	5314	5182	5073
5800	5426	5426	5319	5357	5384	5358	5231	5125