

- 1 AMPLITUDE RECOVERY
- 2 WAPIS (stabilization by wapisch signal)
- 3 MUTING
- 4 DECONVOLUTION 240 ms
WAPIS: 500 2300 ms / 8 kHz
1900 3400 ms / 2000 Hz bottom
- 5 VELOCITY ANALYSIS (VA)
- 6 RMS CORRECTIONS
LINEAR INTERPOLATION
BETWEEN VELOCITY FUNCTIONS

- 7 STACK 4800 \
- 8 TIME VARIANT FILTER (origin sea bottom)
- 9 TRACE EQUALIZATION
- 10 ANALOG DISPLAY

FIELD RECORDING
SAMPLING RATE 4ms

Ship: POLAR BJORN Shooting date: FEB/1976
Field recorder: SN338B filter: 1/8-1/25
floating point sampling: 4 ms
Streamer: 2400 m (depth 19 m)
groups: 48 (group interval: 50 m)
Geophones type: HC 201 n° 48 / group
48Fold coverage
Energy source: VAPORCHOC (depth 5 m)
332" Streamer
SHORAN positioning

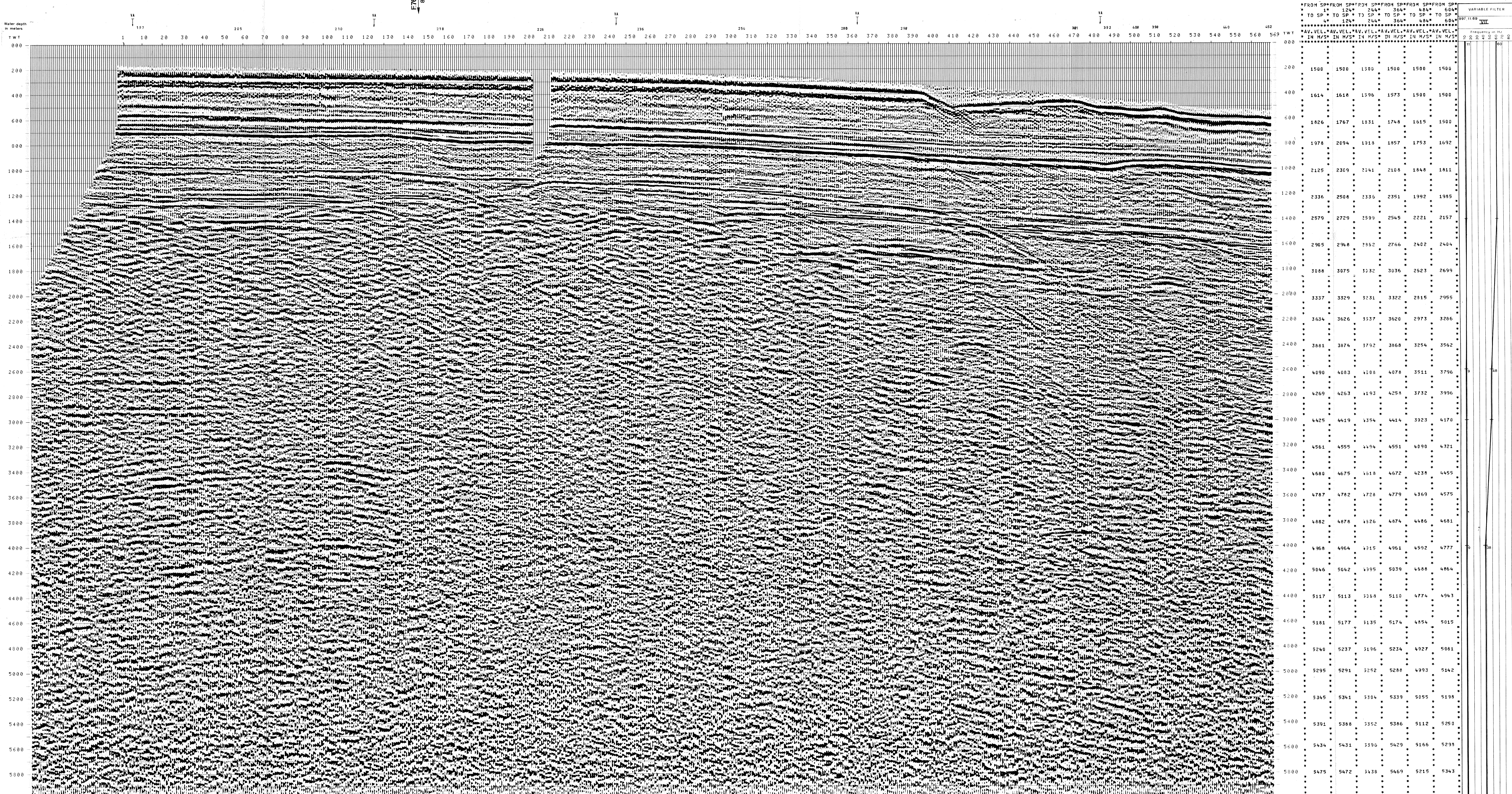
NW 1 LINEA F-76-06 SE 569

1 km

COMPAGNIE GENERALE DE GEOPHYSIQUE

00022

F7603
85



| TWT | 1 | 2 | 3 | 4 | 5 | 6 |
|------|------|------|------|------|------|------|
| 000 | | | | | | |
| 200 | 1500 | 1500 | 1500 | 1500 | 1500 | 1500 |
| 400 | 1614 | 1618 | 1596 | 1573 | 1500 | 1500 |
| 600 | 1826 | 1767 | 1831 | 1748 | 1615 | 1500 |
| 800 | 1978 | 2094 | 1918 | 1857 | 1753 | 1692 |
| 1000 | 2125 | 2309 | 2041 | 2108 | 1848 | 1811 |
| 1200 | 2336 | 2508 | 2336 | 2351 | 1992 | 1985 |
| 1400 | 2579 | 2729 | 2599 | 2545 | 2221 | 2157 |
| 1600 | 2905 | 2948 | 2852 | 2766 | 2402 | 2404 |
| 1800 | 3088 | 3075 | 3132 | 3036 | 2623 | 2699 |
| 2000 | 3337 | 3329 | 3231 | 3322 | 2815 | 2955 |
| 2200 | 3634 | 3626 | 3537 | 3620 | 2973 | 3286 |
| 2400 | 3881 | 3874 | 3792 | 3868 | 3254 | 3562 |
| 2600 | 4090 | 4083 | 4088 | 4078 | 3511 | 3796 |
| 2800 | 4269 | 4263 | 4193 | 4258 | 3732 | 3996 |
| 3000 | 4425 | 4419 | 4354 | 4414 | 3923 | 4170 |
| 3200 | 4561 | 4555 | 4494 | 4551 | 4090 | 4321 |
| 3400 | 4680 | 4675 | 4618 | 4672 | 4238 | 4455 |
| 3600 | 4787 | 4782 | 4728 | 4779 | 4369 | 4575 |
| 3800 | 4882 | 4878 | 4826 | 4874 | 4486 | 4681 |
| 4000 | 4968 | 4964 | 4915 | 4951 | 4592 | 4777 |
| 4200 | 5046 | 5042 | 4995 | 5039 | 4688 | 4864 |
| 4400 | 5117 | 5113 | 5058 | 5110 | 4774 | 4943 |
| 4600 | 5181 | 5177 | 5135 | 5174 | 4854 | 5015 |
| 4800 | 5240 | 5237 | 5196 | 5234 | 4927 | 5081 |
| 5000 | 5295 | 5291 | 5252 | 5288 | 4993 | 5142 |
| 5200 | 5345 | 5341 | 5304 | 5339 | 5055 | 5198 |
| 5400 | 5391 | 5388 | 5352 | 5386 | 5112 | 5250 |
| 5600 | 5434 | 5431 | 5396 | 5429 | 5166 | 5299 |
| 5800 | 5475 | 5472 | 5438 | 5469 | 5215 | 5343 |
| 6000 | 5512 | 5509 | 5477 | 5507 | 5261 | 5385 |

VARIABLE FILTER

997-11-69 VII

Frequency in Hz