

997-11-50

**AGIP**

OFFSHORE ITALIA  
ZONA F

SW 1280 LINEA F.76.05 NE 631

1 km

COMPAGNIE GÉNÉRALES DE GÉOPHYSIQUE

**DIGITAL PROCESSING P5**

TIME ORIGIN: Source and cable depth

STACK 4800%

Boat motion

584 Date: JUNE 1 '76 Checked: [initials]

**PROCESSING**  
SAMPLING RATE 4ms

1 AMPLITUDE RECOVERY  
2 WAPCO stabilization by vaporchoc signal  
3 MUTING  
4 DECONVOLUTION 240 ms  
WINDOW: 500 3000 ms J Below  
1900 3600 ms Sea bottom

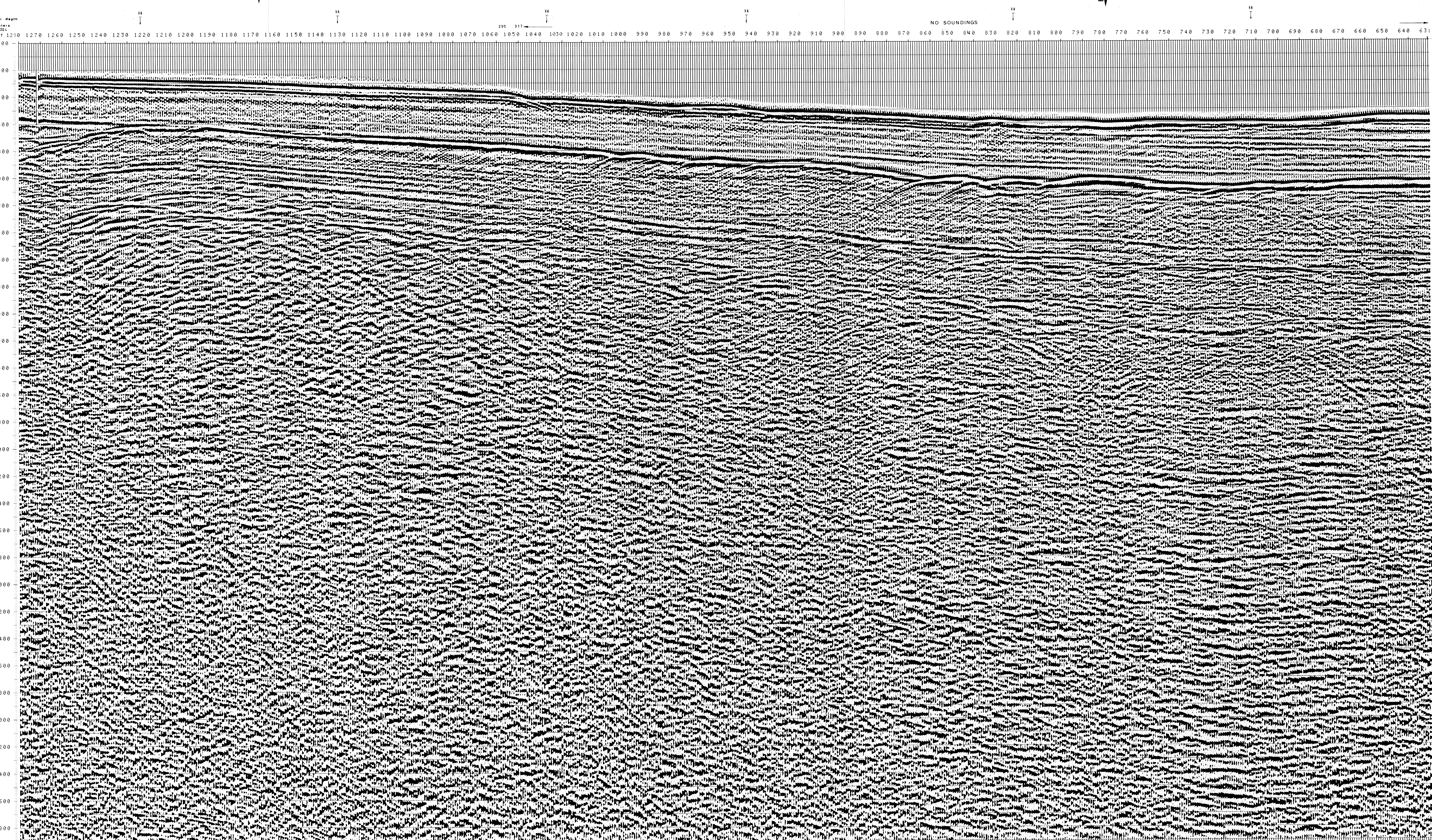
5 VELOCITY ANALYSIS (VA)  
6 NMO CORRECTIONS  
LINEAR INTERPOLATION  
BETWEEN VELOCITY FUNCTIONS

7 STALK 4800 %  
8 TIME VARIANT FILTER (Origin sea bottom)  
9 TRACE EQUALIZATION  
10 ANALOG DISPLAY

**FIELD RECORDING**  
SAMPLING RATE 4ms

Ship GLORITA TIDE Shooting date: FEB/1976  
Field recorder SN 338 Filter VB 125  
Floating point - sampling 4 ms  
Streamer 2400 m (Depth 20 m)  
groups 48 (group interval 50 m)  
Geophones type HC 201 m 48/group  
48Fold coverage  
Energy source VAPORCHOC (Depth m):  
SP 311 Streamer (Depth m):  
310m SHORAN positioning

00021



1W1	223*	113*	436*	94*	821*	71*	59*
000							
200	1500	1500	1500	1500	1500	1500	1500
400	1570	1636	1506	1500	1500	1500	1500
600	1646	1766	1643	1583	1500	1500	1500
800	1964	1901	1792	1724	1650	1606	1647
1000	2141	2163	2121	1946	1741	1796	1834
1200	2326	2537	2407	2265	1927	2043	2028
1400	2593	2733	2762	2469	2120	2354	2280
1600	2806	3044	3046	2690	2269	2699	2417
1800	3405	3439	3441	2862	2728	3002	2863
2000	3725	3795	3767	3177	3182	3304	3173
2200	3966	4014	4015	3488	3420	3656	3488
2400	4284	4229	4231	3747	3865	3902	3749
2600	4388	4412	4413	3967	3909	4109	3965
2800	4546	4588	4569	4155	4101	4287	4193
3000	4663	4703	4704	4318	4268	4441	4316
3200	4803	4822	4823	4460	4413	4576	4459
3400	4908	4927	4927	4566	4542	4695	4565
3600	5002	5019	5020	4698	4656	4801	4697
3800	5086	5103	5103	4798	4759	4898	4797
4000	5162	5177	5178	4888	4851	4981	4887
4200	5231	5245	5246	4970	4934	5050	4969
4400	5293	5307	5307	5044	5016	5128	5043
4600	5356	5363	5364	5111	5079	5192	5110
4800	5402	5424	5415	5173	5142	5291	5173
5000	5450	5462	5462	5230	5200	5384	5230
5200	5494	5506	5506	5283	5254	5484	5282
5400	5535	5546	5547	5332	5304	5580	5331
5600	5573	5584	5584	5377	5350	5673	5376
5800	5608	5619	5619	5419	5393	5763	5419

VARIABLE FILTER VII

Frequency in Hz