

997-11-69 **AGIP**

OFFSHORE ITALIA
ZONA F

NW 2498 LINEA F.76.04 SE 1990

DIGITAL PROCESSING P5
TIME ORIGIN: Source and cable depth
STACK 4800'x
Boat motion ←

738 Date: JUNE 25 '76 Checked HV

PROCESSING
SAMPLING RATE 4'S

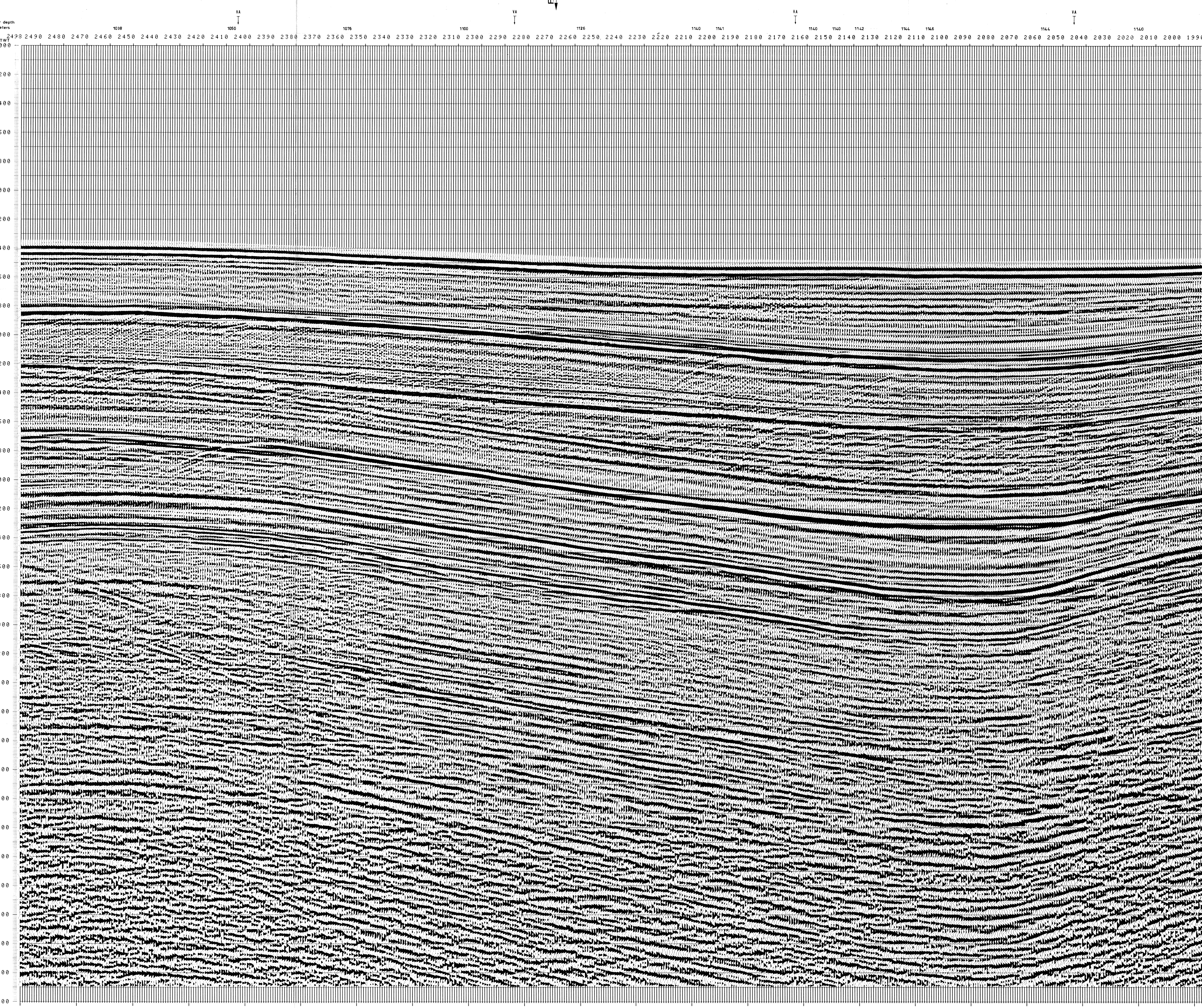
1. AMPLITUDE RECOVERY
2. WAPRO Stabilization by vaporchoc signal
3. MDTING
4. DECONVOLUTION 240 ms
 widths: 200 2300 ms J. Below
 1900 3600 ms I. sea bottom
5. VELOCITY ANALYSIS (VA)
6. NMO CORRECTIONS
 LINEAR INTERPOLATION
 BEFORE VELOCITY FUNCTIONS

7. STACK 4800'
8. TIME VARIANT FILTER (Origin sea bottom)
9. TRACE EQUALIZATION
10. ANALOG DISPLAY

FIELD RECORDING
SAMPLING RATE 4'S

Ship: POLAR BJORN Shooting date: FEB/1976
Field recorder: SN338B filter: 1/8-125
floating point sampling: 4 ms
Streamer 2400 m (Depth 19 m)
groups: 48 (group interval: 50 m)
Geophones type: HC 201 n° 48 / group
48Fold coverage
Energy source: VAPORCHOC (Depth 9 m)
SP 1/3 Streamer 1:48
322m DOPPLER positioning

00012



997-11-69

VARIABLE FILTER

AV. VEL. IN M/S	AV. VEL. IN M/S	AV. VEL. IN M/S	AV. VEL. IN M/S	AV. VEL. IN M/S	AV. VEL. IN M/S
1500	1500	1500	1500	1500	1500
1500	1500	1500	1500	1500	1500
1500	1500	1500	1500	1500	1500
1500	1500	1500	1500	1500	1500
1500	1500	1500	1500	1500	1500
1500	1500	1500	1500	1500	1500
1550	1566	1519	1501	1513	1508
1585	1629	1566	1506	1556	1535
1645	1674	1617	1563	1614	1589
1704	1707	1730	1632	1660	1664
1856	1783	1773	1718	1771	1727
1985	1914	1855	1809	1875	1853
2181	2038	1975	1943	1975	1984
2484	2188	2124	2082	2092	2115
2744	2469	2425	2207	2238	2346
2973	2762	2690	2523	2546	2534
3174	2973	2931	2831	2877	2874
3353	3133	3126	3052	3103	2904
3513	3276	3270	3217	3252	3116
3632	3406	3400	3349	3383	3255
3739	3524	3518	3470	3502	3380
3838	3631	3626	3580	3611	3494
3928	3730	3725	3681	3710	3598
4011	3821	3816	3773	3802	3694
4087	3904	3900	3859	3886	3783
4158	3982	3976	3938	3964	3885
4224	4054	4050	4012	4037	3941
4285	4121	4117	4081	4105	4012
4342	4184	4180	4144	4168	4078
4396	4242	4239	4204	4227	4140
4446	4297	4294	4260	4282	4198
4493	4365	4365	4313	4334	4253