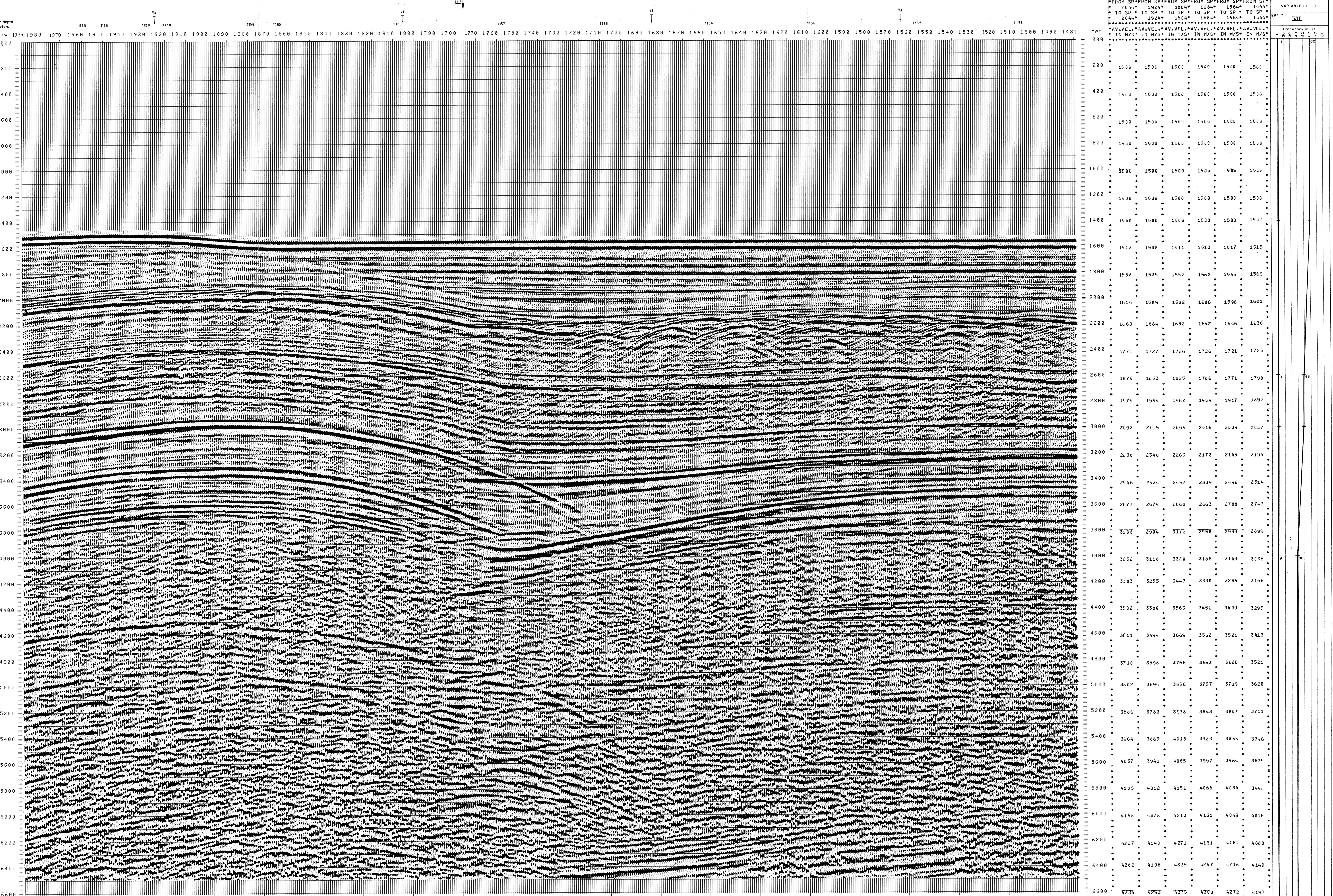


997-11.69	<b>AGIP</b>	PROCESSING SAMPLING RATE 4Hz		FIELD RECORDING SAMPLING RATE 4Hz
OFFSHORE ITALIA ZONA F	DIGITAL PROCESSING P5	1 AMPLITUDE RECOVERY	7 STACK 4800 %	Ship POLAR BJORN Shooting date: FEB /1976
NW 1989	TIME ORIGIN: Source and cable depth	2 WAPCO stabilization by vaporchoc (signal)	8 TIME VARIANT FILTER (origin sea bottom)	Field recorder: SN3388 filter: 1/8-125
SE 1481	STACK 4800 %	3 MUTING	9 TRACE EQUALIZATION	floating point sampling: 4 ms
1 km	Boat motion	4 DECONVOLUTION 240 ms widths: 500 - 3200 ms J below 1900 3600 ms sea bottom	10 ANALOG DISPLAY	Streamer 2400 m (depth 10 m)
COMPAGNIE GENERALE DE GEOPHYSIQUE	Date: JUNE 25 76	5 VELOCITY ANALYSIS (VA) LINEAR INTERPOLATION BETWEEN VELOCITY FUNCTIONS		groups 48 (group interval 50 m)
737	Checked: <input type="checkbox"/>	6 NMO CORRECTIONS		Geophones type HC 201 n° 48 / group
				48Fold coverage
				Energy source: VAPORCHOC (Depth 5 m)
				332m DOPPLER positioning

00011



TWT	VARIABLE FILTER					
	2044*	1924*	1804*	1684*	1564*	1444*
	TO SP*	TO SP*	TO SP*	TO SP*	TO SP*	TO SP*
	IN M/S*	IN M/S*	IN M/S*	IN M/S*	IN M/S*	IN M/S*
000						
200	1506	1500	1500	1500	1500	1500
400	1500	1500	1500	1500	1500	1500
600	1500	1500	1500	1500	1500	1500
800	1500	1500	1500	1500	1500	1500
1000	1500	1500	1500	1500	1500	1500
1200	1500	1500	1500	1500	1500	1500
1400	1500	1500	1500	1500	1500	1500
1600	1513	1508	1511	1513	1517	1515
1800	1550	1535	1552	1562	1555	1569
2000	1614	1509	1582	1606	1596	1601
2200	1660	1664	1652	1642	1646	1636
2400	1771	1727	1726	1726	1721	1725
2600	1875	1853	1825	1786	1771	1790
2800	1975	1984	1962	1904	1917	1892
3000	2092	2115	2055	2016	2039	2007
3200	2238	2346	2263	2173	2145	2194
3400	2546	2534	2457	2339	2496	2514
3600	2877	2874	2866	2863	2788	2747
3800	3168	2904	3112	2950	2999	2894
4000	3252	3118	3320	3186	3149	3036
4200	3383	3255	3447	3330	3285	3166
4400	3502	3380	3563	3451	3409	3295
4600	3711	3494	3666	3562	3521	3413
4800	3710	3598	3766	3663	3625	3521
5000	3802	3694	3856	3757	3719	3620
5200	3866	3783	3938	3843	3807	3711
5400	3964	3865	4015	3923	3888	3796
5600	4037	3941	4085	3997	3964	3875
5800	4105	4012	4151	4066	4034	3946
6000	4168	4078	4213	4131	4099	4016
6200	4227	4140	4271	4191	4161	4080
6400	4282	4198	4325	4247	4210	4140
6600	4334	4253	4375	4300	4272	4197