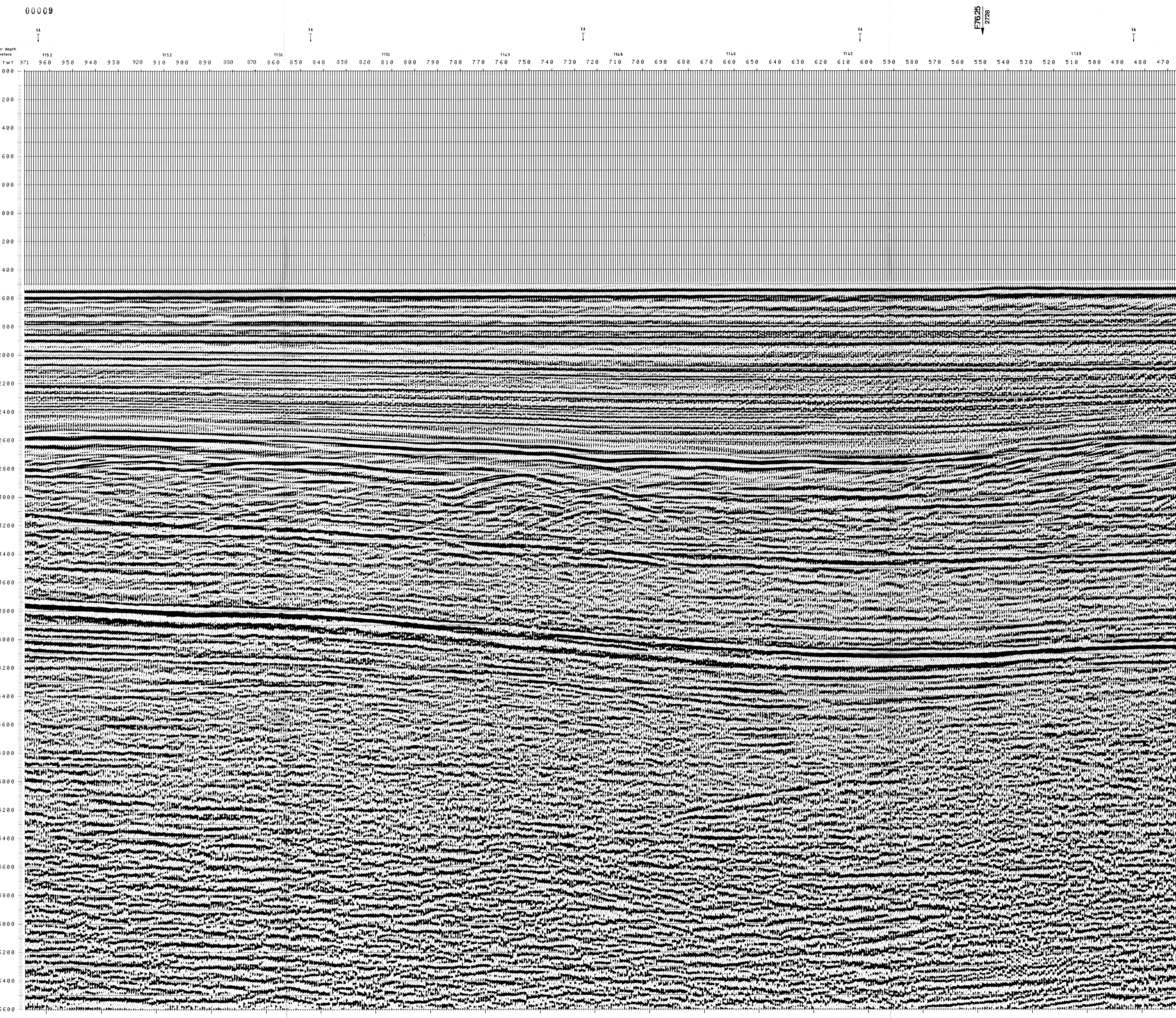


DIGITAL PROCESSING P5 TIME ORIGIN: Source and cable depth STACK 4800% Boat motion	1 AMPLITUDE RECOVERY	7 STACK 4800 %	FIELD RECORDING SAMPLING RATE 4 m/s Ship POLAR BJORN Shooting date: FEB/1976 Field recorder: SN338B filter: 1/8-1/25 floating point sampling: 4 ms Streamer: 2400 m (Depth 15 m) groups: 48 (group interval: 50 m) Geophones type: HC 201 n° 48 / group 48Fold coverage Energy source: VAPORCHOC (Depth 5 m) SP 1r1 Streamer 1r48 V 330m DOPPLER positioning
	2 WAFDC (stabilization by vaporchoc signal)	8 TIME VARIANT FILTER (origin sea bottom)	
	3 MUTING	9 TRACE EQUALIZATION	
4 DECONVOLUTION 240 ms window: 500 2300 ms J. Below 1900 3600 ms 1/3200 below	10 ANALOG DISPLAY	5 VELOCITY ANALYSIS (VA) 6 NMO CORRECTIONS LINEAR INTERPOLATION BETWEEN VELOCITY FUNCTIONS	



TWT	*AV. VEL.*AV. VEL.*AV. VEL.*AV. VEL.*AV. VEL.*AV. VEL.*AV. VEL.*AV. VEL.*							
	IN M/S	IN M/S	IN M/S	IN M/S	IN M/S	IN M/S	IN M/S	IN M/S
000								
200	1500	1500	1500	1500	1500	1500	1500	1500
400	1500	1500	1500	1500	1500	1500	1500	1500
600	1501	1501	1501	1501	1501	1501	1501	1501
800	1501	1501	1501	1501	1501	1501	1501	1501
1000	1500	1500	1500	1500	1500	1500	1500	1500
1200	1500	1500	1500	1500	1500	1500	1500	1500
1400	1501	1501	1501	1501	1501	1501	1501	1501
1600	1525	1509	1505	1511	1523	1516	1536	
1800	1553	1542	1533	1546	1570	1557	1566	
2000	1604	1588	1596	1602	1601	1592	1599	
2200	1649	1636	1644	1636	1645	1642	1655	
2400	1717	1711	1712	1697	1710	1710	1727	
2600	1785	1786	1791	1786	1749	1772	1603	
2800	1864	1905	1868	1876	1887	1853	1869	
3000	1977	1972	1956	2001	1996	1929	1931	
3200	2093	2154	2042	2105	2080	2017	1999	
3400	2231	2164	2121	2147	2154	2094	2059	
3600	2362	2261	2192	2363	2164	2219	2244	
3800	2591	2360	2255	2524	2387	2343	2385	
4000	2753	2581	2462	2668	2517	2463	2509	
4200	2941	2695	2666	2799	2694	2676	2682	
4400	3085	3017	2964	2927	2895	2883	2848	
4600	3211	3146	3114	3032	3048	3072	2999	
4800	3328	3265	3234	3196	3171	3213	3129	
5000	3434	3375	3344	3269	3244	3324	3239	
5200	3533	3475	3447	3375	3389	3427	3346	
5400	3625	3569	3541	3472	3485	3523	3444	
5600	3709	3656	3629	3562	3575	3611	3555	
5800	3788	3737	3711	3646	3659	3693	3620	
6000	3862	3812	3787	3724	3737	3770	3699	
6200	3931	3883	3896	3798	3810	3842	3774	
6400	3996	3949	3929	3867	3878	3910	3843	
6600	4056	4011	3986	3931	3942	3973	3909	