

997-11-50 **AGIP**

OFFSHORE ITALIA
ZONA F

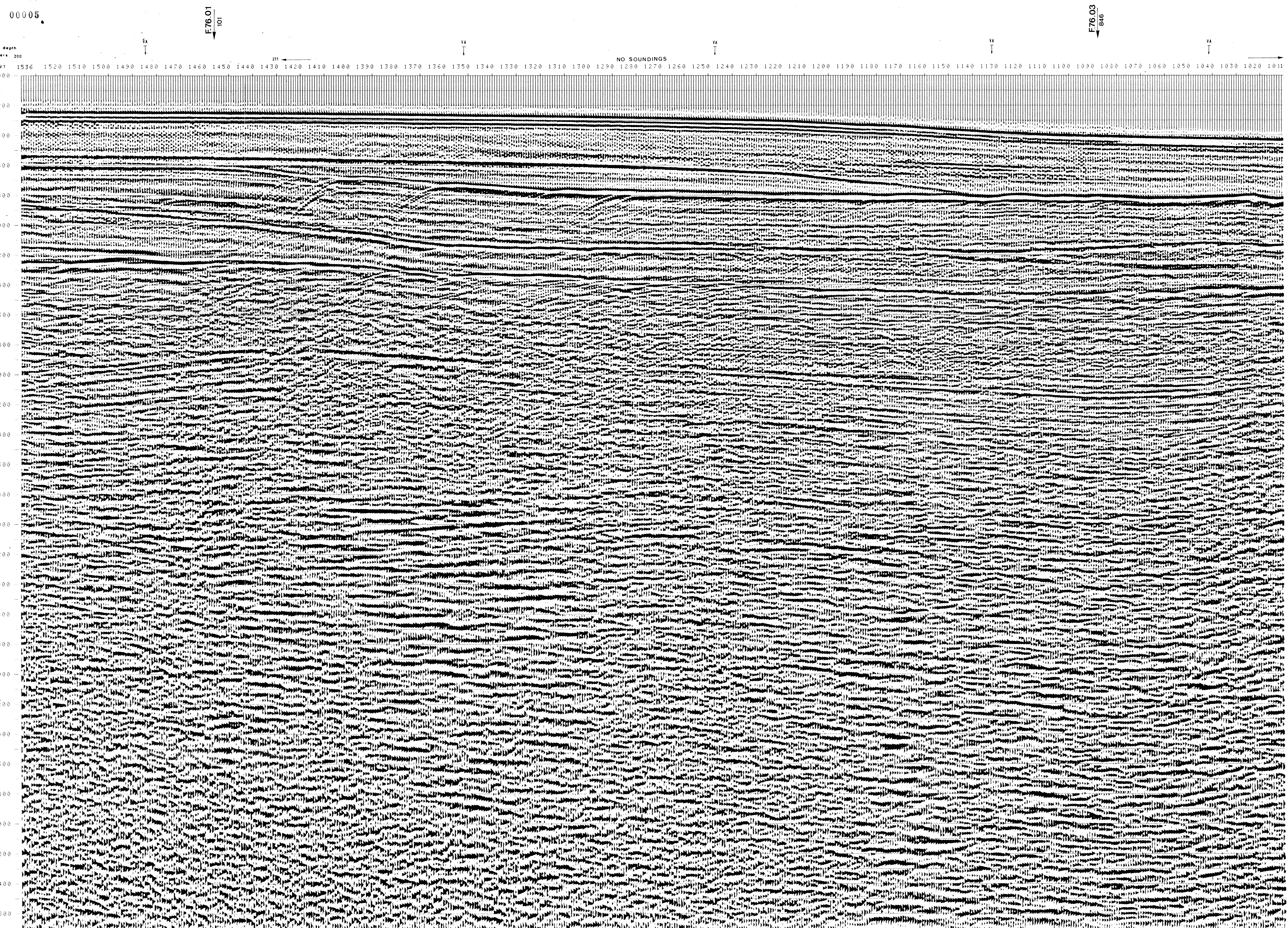
NW 1536 LINEA F-76.02 SE 1011

1 km

COMPAGNIE GENERALE DE GEOPHYSIQUE

| PROCESSING SAMPLING RATE 4ms | FIELD RECORDING SAMPLING RATE 4ms |
|---|---|
| 1 AMPLITUDE RECOVERY 2 WAPCO (stabilization by vaporchoc signal) 3 MUTING 4 DECONVOLUTION 240 ms WINDOW: 500 2300 ms J Below 1900 3600 ms 1/2a bottom 5 VELOCITY ANALYSIS (VA) 6 NMO CORRECTIONS (LINEAR INTERPOLATION BETWEEN VELOCITY FUNCTIONS) | 7 STACK 4800 % 8 TIME VARIANT FILTER (Origin sea bottom) 9 TRACE EQUALIZATION 10 ANALOG DISPLAY Ship: GLORITA TIDE Shooting date: JAN/1976 Field recorder: SN 338 filter 1/8 125 Floating point: sampling 4 ms Streamer: 2400 m (Depth 20 m) Groups: 48 (group interval 50 m) Geophones type: HC 201 n° 48 / group 48Fold coverage Energy source: VAPORCHOC (Depth 6 m) SP 1r1 Streamer Tr48 310m SHORAN positioning |

582 Date: JUNE 1-76 Checked JUNE 9-76 0/0



| TWT | SP*FROM 1484* | SP*FROM 1351* | SP*FROM 1246* | SP*FROM 1131* | SP*FROM 1041* | SP*FROM 946* | VARIABLE FILTER |
|------|---------------|---------------|---------------|---------------|---------------|--------------|-----------------|
| | TO SP* | TO SP* | TO SP* | TO SP* | TO SP* | TO SP* | VII |
| | 1535* | 1351* | 1246* | 1131* | 1041* | 946* | Frequency in Hz |
| 000 | | | | | | | 0 |
| 200 | 1500 | 1500 | 1500 | 1500 | 1500 | 1500 | 60 |
| 400 | 1629 | 1534 | 1534 | 1532 | 1500 | 1500 | |
| 600 | 1701 | 1589 | 1563 | 1709 | 1666 | 1589 | |
| 800 | 1950 | 1838 | 1664 | 1808 | 1809 | 1702 | |
| 1000 | 2361 | 2135 | 2217 | 2102 | 2099 | 1915 | |
| 1200 | 2646 | 2489 | 2336 | 2486 | 2332 | 2200 | |
| 1400 | 3208 | 2965 | 2755 | 2761 | 2503 | 2635 | |
| 1600 | 3632 | 3383 | 2956 | 3034 | 2945 | 3153 | |
| 1800 | 3962 | 3740 | 3361 | 3431 | 3343 | 3536 | |
| 2000 | 4226 | 4026 | 3585 | 3747 | 3668 | 3842 | |
| 2200 | 4441 | 4260 | 3950 | 4007 | 3935 | 4093 | |
| 2400 | 4621 | 4455 | 4171 | 4223 | 4157 | 4302 | |
| 2600 | 4773 | 4620 | 4358 | 4406 | 4345 | 4476 | |
| 2800 | 4904 | 4762 | 4513 | 4562 | 4506 | 4630 | |
| 3000 | 5011 | 4884 | 4596 | 4698 | 4649 | 4761 | |
| 3200 | 5116 | 4991 | 4773 | 4817 | 4767 | 4876 | |
| 3400 | 5203 | 5086 | 4885 | 4922 | 4875 | 4977 | |
| 3600 | 5281 | 5170 | 4980 | 5015 | 4971 | 5068 | |
| 3800 | 5350 | 5245 | 5166 | 5098 | 5057 | 5148 | |
| 4000 | 5413 | 5313 | 5142 | 5173 | 5134 | 5221 | |
| 4200 | 5469 | 5374 | 5212 | 5241 | 5204 | 5286 | |
| 4400 | 5520 | 5430 | 5275 | 5303 | 5267 | 5346 | |
| 4600 | 5567 | 5481 | 5332 | 5359 | 5325 | 5401 | |
| 4800 | 5610 | 5527 | 5385 | 5411 | 5378 | 5451 | |
| 5000 | 5650 | 5570 | 5434 | 5459 | 5427 | 5496 | |
| 5200 | 5686 | 5610 | 5479 | 5503 | 5472 | 5539 | |
| 5400 | 5720 | 5646 | 5520 | 5543 | 5514 | 5578 | |
| 5600 | 5752 | 5681 | 5559 | 5581 | 5553 | 5615 | |