

997-11-50

AGIP

OFFSHORE ITALIA
ZONA F

SW 2218 LINEA F-75-87 NE 2792

1 km

COMPAGNIE GENERALE DE GEOPHYSIQUE

DIGITAL PROCESSING P5

TIME ORIGIN: Source and cable depth

STACK 4800%

Boat motion

381 Date MARCH 76 Checked R/S

PROCESSING (SAMPLING RATE 4ms)

1. AMPLITUDE RECOVERY
2. WAXFO stabilization by vaporchoc signal
3. MUTING
4. DECONVOLUTION 240 ms
WAXFO: 500 3300 ms J 3416
1900 3600 ms sea bottom
5. VELOCITY ANALYSIS (VA)
6. NMO CORRECTIONS
LINEAR INTERPOLATION
BETWEEN VELOCITY FUNCTIONS
7. STACK 4800%
8. TIME VARIANT FILTER (origin sea bottom)
9. TRACE EQUALIZATION
10. ANALOG DISPLAY

FIELD RECORDING (SAMPLING RATE 4ms)

Ship: GLORITA TIDE Shooting date: DEC/1975

Field recorder: SN 338 filter: V8 125

Floating point: sampling: 4 ms

Streamer: 2400 m (base: 19 m)

Groups: 48 (group interval: 50 m)

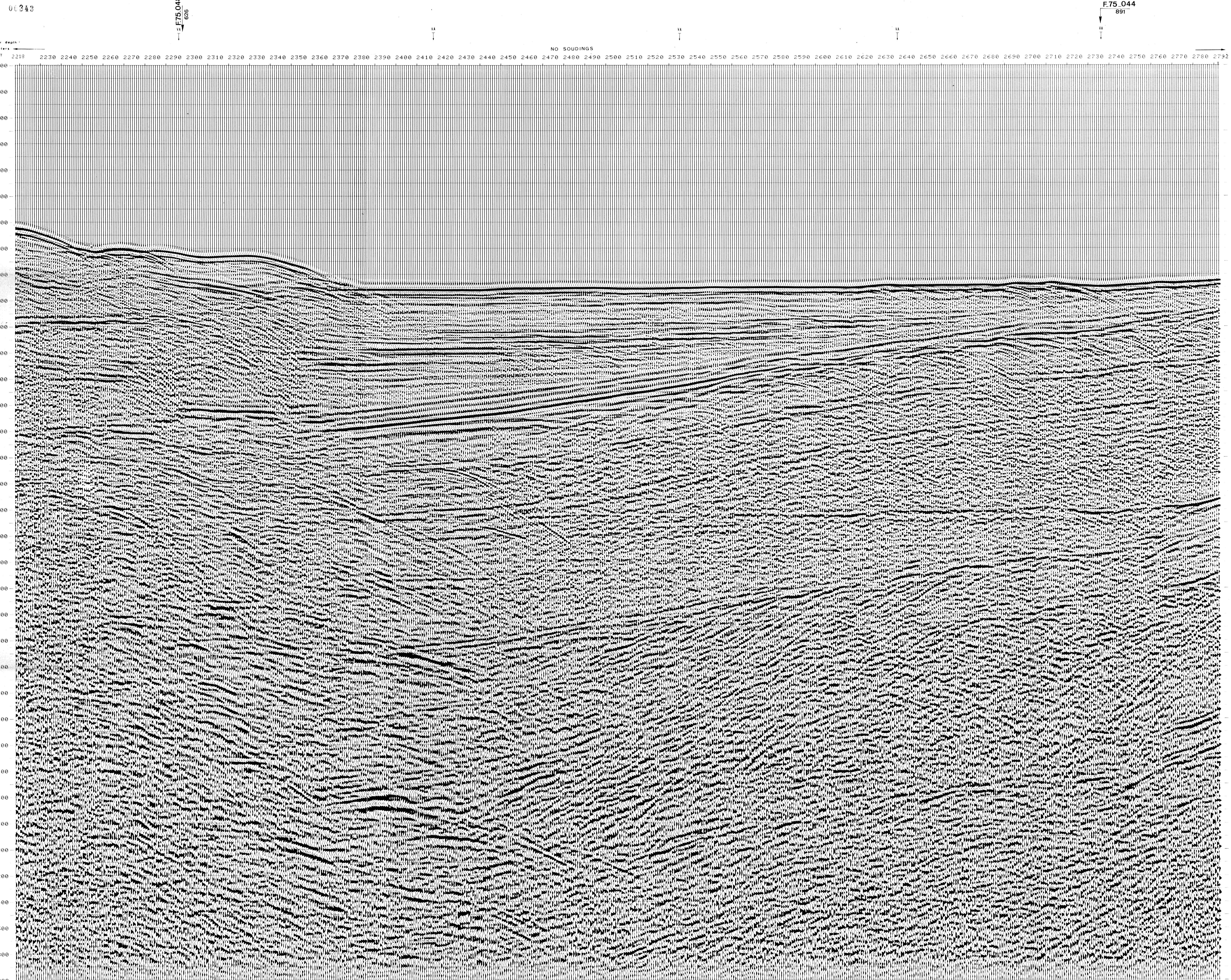
Geophones type: HC 201 n° 48 / group

48Fold coverage

Energy source: VAPORCHOC (depth: 12 Tr)

Streamers: 148

330° MOTOROLA positioning



F75_044
891

TWT	2191*	2253*	2381*	2534*	2636*	2735*
AV. VEL.	AV. VEL.	AV. VEL.	AV. VEL.	AV. VEL.	AV. VEL.	AV. VEL.
IN M/S*	IN M/S*	IN M/S*	IN M/S*	IN M/S*	IN M/S*	IN M/S*
000						
200	1500	1500	1500	1500	1500	1500
400	1500	1500	1500	1500	1500	1500
600	1500	1500	1500	1500	1500	1500
800	1500	1500	1500	1500	1500	1500
1000	1500	1500	1500	1500	1500	1500
1200	1500	1500	1500	1500	1500	1500
1400	1619	1531	1500	1500	1500	1500
1600	1770	1616	1500	1500	1500	1500
1800	1838	1687	1582	1572	1574	1573
2000	1913	1747	1683	1586	1613	1589
2200	2053	1838	1619	1629	1674	1642
2400	2232	1976	1695	1692	1956	2197
2600	2453	2315	1796	1857	2387	2586
2800	2638	2602	1934	2127	2757	2863
3000	2760	2840	2406	2560	2921	3023
3200	2929	3043	2888	3199	3065	3196
3400	3098	3205	3123	3352	3226	3349
3600	3246	3349	3272	3488	3369	3486
3800	3382	3478	3405	3610	3497	3607
4000	3503	3594	3524	3719	3612	3717
4200	3612	3699	3633	3819	3716	3816
4400	3712	3795	3731	3909	3811	3906
4600	3802	3882	3821	3991	3897	3989
4800	3886	3962	3904	4066	3977	4064
5000	3962	4035	3979	4135	4049	4133
5200	4033	4103	4049	4199	4117	4198
5400	4098	4166	4114	4259	4179	4257
5600	4159	4224	4174	4314	4237	4312
5800	4216	4279	4231	4365	4291	4363
6000	4268	4329	4283	4413	4341	4411
6200	4318	4377	4332	4458	4388	4456
6400	4364	4421	4378	4499	4432	4498
6600	4408	4463	4421	4539	4474	4537
6800	4449	4502	4461	4576	4513	4574
7000	4487	4539	4499	4611	4549	4609