

997-11-50 **AGIP**

OFFSHORE ITALIA
ZONA F

SW 880 LINEA F-75.087(N) 421 NE

1 km

COMPAGNIE GENERALE DE GEOPHYSIQUE

DIGITAL PROCESSING P5

TIME ORIGIN: Source and cable depth

STACK 4800 %

Boat motion

406 Date: MARCH 15-76 Checked

PROCESSING SAMPLING RATE 4 m/s

1. AMPLITUDE RECOVERY
2. WAPCO stabilization by vaporchoc signal
3. MUTING
4. DECONVOLUTION 240 ms
Windows 800 - 2300 ms J Below
1900 - 3800 ms I Sea bottom
5. VELOCITY ANALYSIS (VA)
6. NMO CORRECTIONS
(LINEAR INTERPOLATION BETWEEN VELOCITY FUNCTIONS)
7. STACK 4800 %
8. TIME VARIANT FILTER (Origin sea bottom)
9. TRACE EQUALIZATION
10. ANALOG DISPLAY

FIELD RECORDING SAMPLING RATE 4 m/s

Ship: GLORITA TIDE Shooting date: DEC/1975

Field recorder: SN 338 Filter: V8 125

Floating point: sampling 4 ms

Streamer: 2400 m (Depth 19 m)

groups 48 (group interval 50 m)

Geophones type: HC 201 n° 48 / group

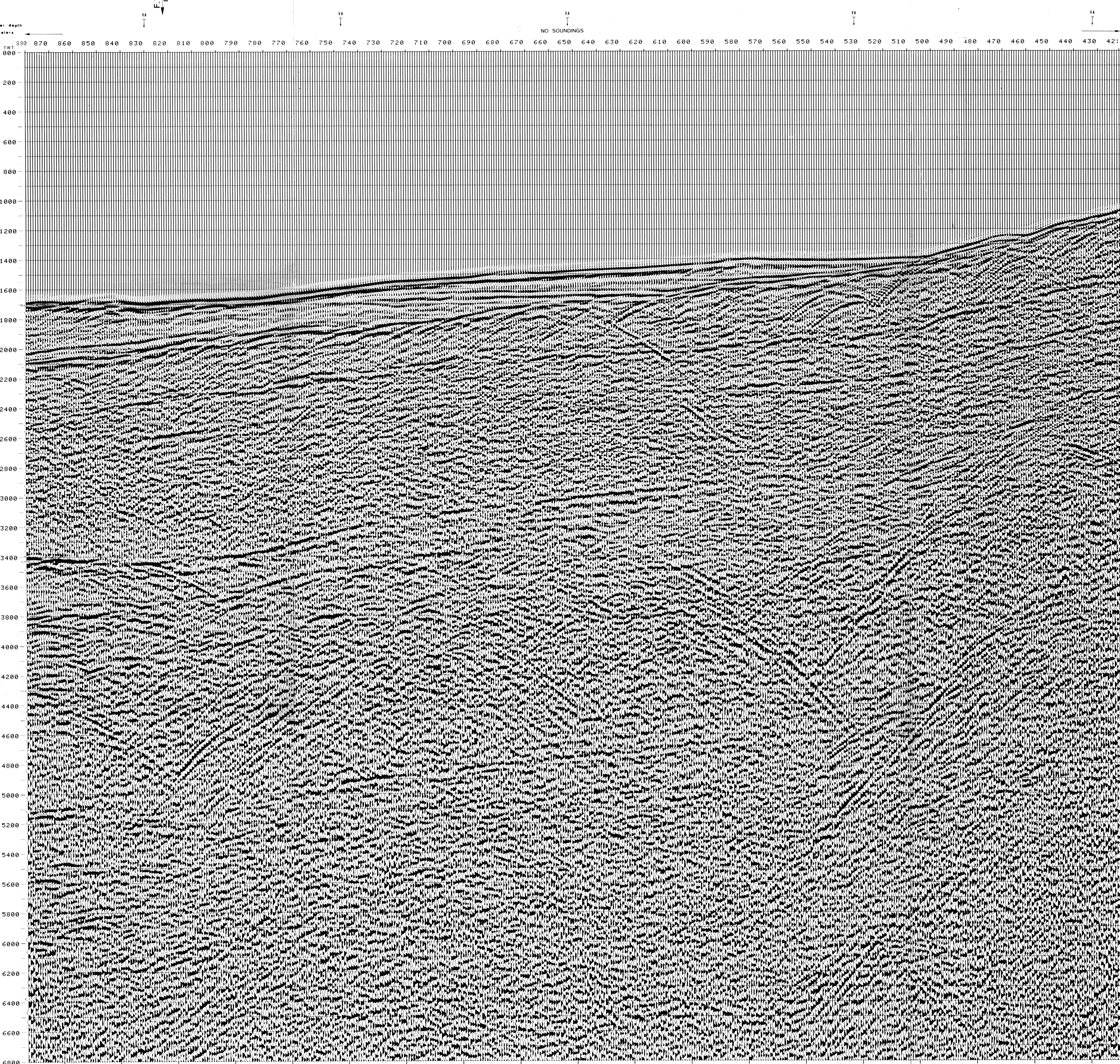
48 Fold coverage

Energy source: VAPORCHOC (Depth 6 m)

SP Tr1 Streamer (Depth 6 m) Tr 48

320m MOTOROLA positioning

00345



087(N)						
FROM SP	*FROM SP*	*FROM SP*	*FROM SP*	*FROM SP*	*FROM SP*	*FROM SP*
829*	746*	651*	531*	431*	269*	
TO SP*	TO SP*	TO SP*	TO SP*	TO SP*	TO SP*	TO SP*
880*	746*	651*	531*	431*	269*	
AV. VEL. *AV. VEL.* *AV. VEL.* *AV. VEL.* *AV. VEL.* *AV. VEL.*						
IN M/S*	IN M/S*	IN M/S*	IN M/S*	IN M/S*	IN M/S*	IN M/S*
1500	1500	1500	1500	1500	1500	
1500	1500	1500	1500	1500	1500	
1500	1500	1500	1500	1500	1500	
1500	1500	1500	1500	1500	1792	
1500	1500	1500	1500	1500	2107	
1500	1500	1500	1500	1562	2325	
1500	1500	1500	1502	1982	2837	
1500	1502	1511	1610	2443	2946	
1547	1528	1621	1859	2817	3031	
1583	1729	1926	2317	3057	3099	
1863	1992	2029	2499	3318	3345	
2137	2206	2062	3233	3524	3549	
2638	2625	3026	3430	3699	3723	
3017	2952	3224	3599	3849	3871	
3366	3144	3396	3746	3979	3999	
3560	3310	3546	3874	4093	4112	
3691	3457	3679	3988	4194	4211	
3809	3587	3797	4088	4283	4299	
3913	3703	3902	4178	4363	4378	
4008	3808	3997	4259	4434	4449	
4093	3903	4083	4333	4499	4514	
4171	3989	4161	4399	4559	4572	
4241	4068	4232	4460	4613	4626	
4306	4140	4297	4516	4662	4674	
4366	4206	4357	4567	4707	4719	
4421	4268	4413	4615	4749	4761	
4472	4324	4464	4659	4788	4799	
4520	4377	4512	4699	4824	4835	
4564	4426	4556	4737	4858	4868	
4605	4472	4598	4773	4889	4899	
4643	4515	4637	4806	4919	4929	
4680	4555	4673	4837	4946	4956	
4714	4593	4707	4866	4972	4981	
4745	4628	4733	4894	4997	5005	