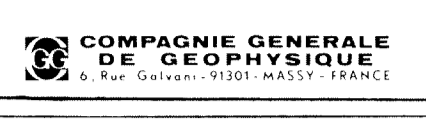


OFFSHORE ITALIA
ZONA F

SW 352 LINEA F-75-81 NE 768

1 km



DIGITAL PROCESSING P5
TIME ORIGIN: Source and cable depth
STACK 4800 %
Boat motion
468 Date: APRIL 14, 76 Checkpd

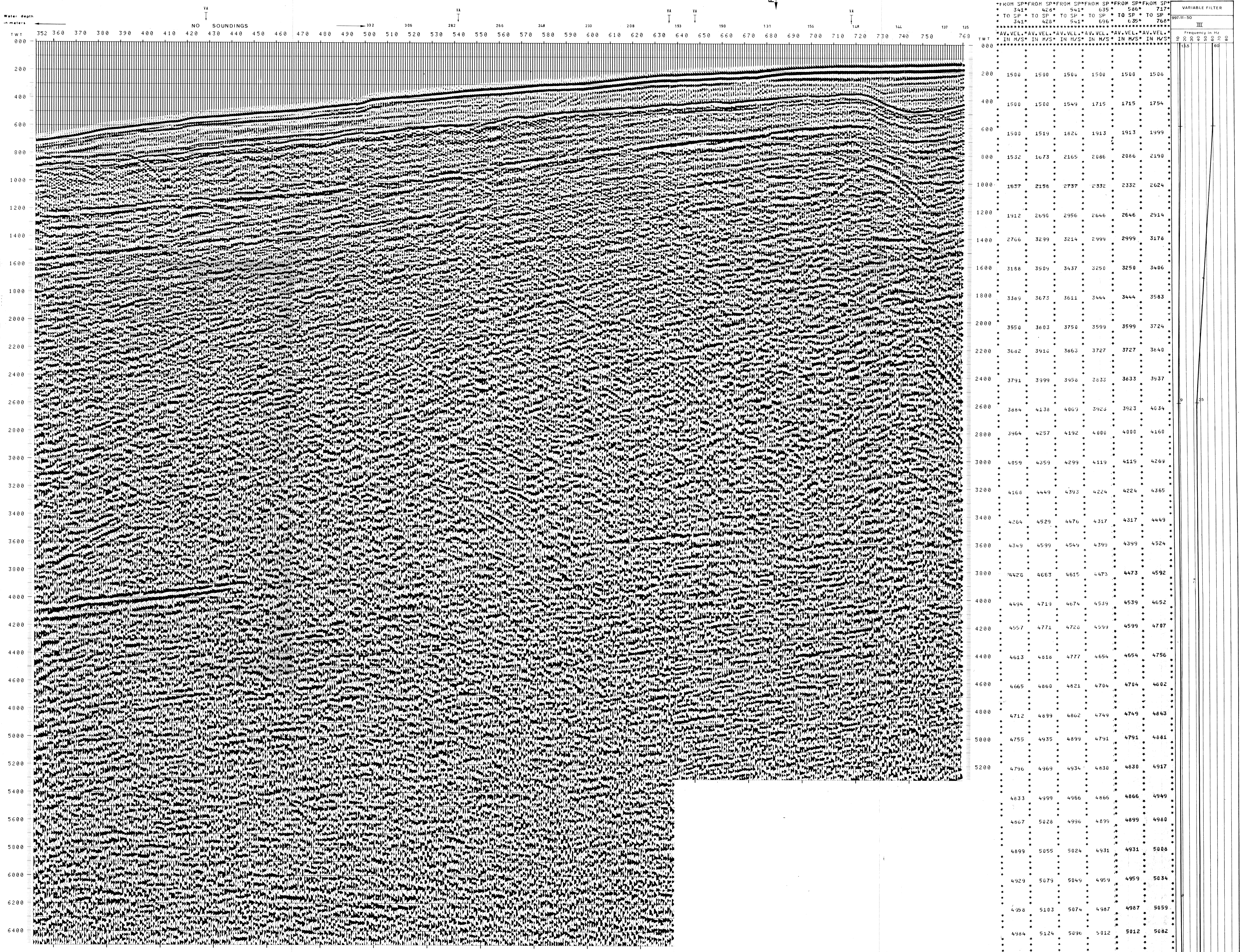
PROCESSING
SAMPLING RATE 4 ms
1. AMPLITUDE RECOVERY
2. WAPCO stabilization by vaporchoc signal
3. MUTING
4. DECONVOLUTION 240 ms
5. VELOCITY ANALYSIS (VA)
6. NMO CORRECTIONS
(LINEAR INTERPOLATION BETWEEN VELOCITY FUNCTIONS)

7. STACK 4800 %
8. TIME VARIANT FILTER (Origin sea bottom)
9. TRACE EQUALIZATION
10. ANALOG DISPLAY

FIELD RECORDING
SAMPLING RATE 4 ms
Ship: GLORITA TIDE Shooting date: DEC 1975
Field recorder: SN 338 filter: V8 125
Floating point: sampling 4 ms
Streamer: 2400 m (depth 18 m)
groups: 48 (group interval 50 m)
Geophones type: HC 201 nr: 48 / group
48 fold coverage
Energy source: VAPORCHOC (Depth: 320m)
SP 1r1 Streamer 1r48
MOTOROLA positioning

00334

F75-040A
45



VARIABLE FILTER						
997-11-50						
Frequency in Hz						
0 20 40 60 80						
FROM SP	FROM SP	FROM SP	FROM SP	FROM SP	FROM SP	FROM SP
341*	428*	541*	635*	586*	717*	717*
TO SP	TO SP	TO SP	TO SP	TO SP	TO SP	TO SP
341*	428*	541*	635*	635*	768*	768*
*AV.VEL. *AV.VEL. *AV.VEL. *AV.VEL. *AV.VEL. *AV.VEL. *						
IN M/S	IN M/S	IN M/S	IN M/S	IN M/S	IN M/S	IN M/S
000						
200	1500	1500	1500	1500	1500	1500
400	1500	1500	1549	1715	1715	1754
600	1500	1519	1820	1913	1913	1999
800	1532	1673	2165	2086	2086	2190
1000	1637	2156	2737	2332	2332	2624
1200	1912	2690	2956	2646	2646	2914
1400	2766	3299	3214	2999	2999	3178
1600	3188	3504	3437	3250	3250	3406
1800	3389	3673	3611	3444	3444	3583
2000	3550	3803	3750	3599	3599	3724
2200	3642	3910	3863	3727	3727	3840
2400	3791	3999	3950	3833	3833	3937
2600	3884	4138	4063	3923	3923	4034
2800	3964	4257	4192	4000	4000	4160
3000	4059	4359	4299	4119	4119	4269
3200	4168	4449	4393	4224	4224	4365
3400	4264	4529	4476	4317	4317	4449
3600	4349	4599	4549	4399	4399	4524
3800	4420	4663	4615	4473	4473	4592
4000	4494	4713	4674	4539	4539	4652
4200	4557	4771	4728	4599	4599	4707
4400	4613	4818	4777	4654	4654	4756
4600	4665	4860	4821	4704	4704	4802
4800	4712	4899	4862	4749	4749	4843
5000	4755	4935	4899	4791	4791	4881
5200	4796	4969	4934	4830	4830	4917
5400	4833	4999	4966	4866	4866	4949
5600	4867	5028	4996	4899	4899	4980
5800	4899	5055	5024	4931	4931	5008
6000	4929	5079	5049	4959	4959	5034
6200	4958	5103	5074	4987	4987	5059
6400	4984	5124	5096	5012	5012	5082