

997-11-50 **AGIP**

OFFSHORE ITALIA  
ZONA F

SW 1 LINEA F.75.77 NE 553

1 km

COMPAGNIE GÉNÉRALES DE GÉOPHYSIQUE

DIGITAL PROCESSING P5

TIME ORIGIN: Source and cable depth

STACK 4800%

Boat motion

487 Date: APRIL 22, 76 Checked: N

PROCESSING SAMPLING RATE 4 ms

- AMPLITUDE RECOVERY
- WAP (Distabilization by vaporchoc signal)
- MUTING
- DECONVOLUTION 240 ms  
Windows: 500 - 2300 ms J. Belsa  
1900 - 3800 ms sea bottom
- VELOCITY ANALYSIS (VA)  
6 RMS CORRECTIONS  
(LINEAR INTERPOLATION BETWEEN VELOCITY FUNCTIONS)
- STACK 4800%
- TIME VARIANT FILTER (Origin sea bottom)
- TRACE EQUALIZATION
- ANALOG DISPLAY

FIELD RECORDING SAMPLING RATE 4 ms

Ship: GLORITA TIDE Shooting date: DEC/1975

Field recorder: 5N 338 filter: VB 125

Floating point: sampling 4 ms

Streamer: 2400m (depth 18 m)

Groups: 48 (group interval 50 m)

Geophones type: HC 201 n° 48 / group

48 Fold coverage

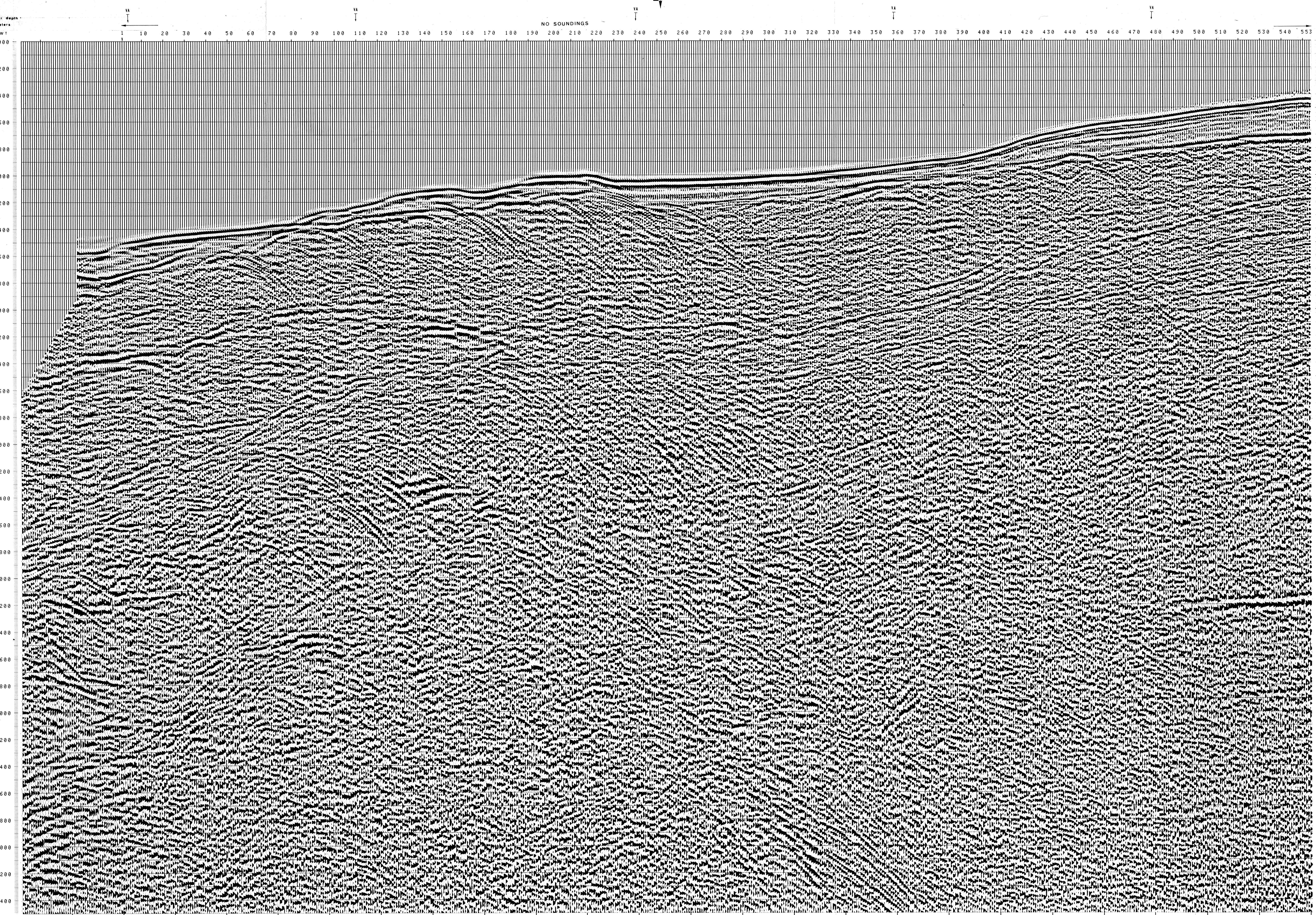
Energy source: VAPORCHOC (depth 6 m)

SP: Tri Streamer (depth 6 m)

320m MOTOROLA positioning

00329

F.75.042B  
1286



TWT	VARIABLE FILTER							
	1*	100*	276*	314*	479*	579*	TO SP*	TO SP*
000	1500	1500	1500	1500	1500	1500		
200	1500	1500	1500	1500	1500	1500		
400	1500	1500	1500	1500	1500	1500		
600	1500	1500	1500	1500	1540	1788		
800	1500	1500	1500	1500	1809	2293		
1000	1500	1500	1500	1559	2749	2740		
1200	1500	1500	1539	1848	2891	2939		
1400	1500	1565	1828	2671	3214	3285		
1600	1540	1829	2193	3225	3437	3500		
1800	1654	2141	2433	3333	3611	3666		
2000	2051	2403	2699	3500	3750	3799		
2200	2415	2814	3021	3636	3863	3909		
2400	2778	3083	3198	3750	3958	4000		
2600	3101	3230	3334	3846	4069	4138		
2800	3236	3357	3450	3928	4192	4257		
3000	3352	3466	3551	4000	4299	4359		
3200	3453	3562	3639	4112	4393	4449		
3400	3542	3647	3717	4211	4476	4529		
3600	3622	3722	3786	4299	4541	4599		
3800	3693	3789	3848	4378	4615	4663		
4000	3757	3849	3903	4449	4674	4719		
4200	3815	3904	3954	4514	4728	4771		
4400	3867	3954	3999	4572	4777	4816		
4600	3915	4000	4078	4626	4821	4860		
4800	3959	4074	4149	4674	4862	4899		
5000	3999	4143	4215	4719	4899	4935		
5200	4069	4207	4276	4761	4934	4969		
5400	4133	4266	4333	4799	4966	4999		
5600	4192	4321	4385	4835	4996	5028		
5800	4248	4372	4434	4866	5024	5055		
6000	4299	4419	4479	4899	5049	5079		
6200	4348	4464	4522	4929	5074	5103		
6400	4393	4506	4562	4956	5096	5124		