

997-11.50

AGIP

OFFSHORE ITALIA  
ZONA F

S 2000 LINEA F-75-64 N 1305

1 km

COMPAGNIE GÉNÉRALES DE GÉOPHYSIQUE

DIGITAL PROCESSING P5

TIME ORIGIN: Source and cable depth

STACK 4800 %

Boat motion

413 Date MARCH 26, 76 Checked

PROCESSING (SAMPLE RATE 4%)

1. AMPLITUDE RECOVERY
2. WAFD (stabilization by magnetic signal)
3. METING
4. DECONVOLUTION 240 ms  
WAVELENGTH 200 3200 m J. Below  
1900 3600 m J. Sea bottom
5. VELOCITY ANALYSIS (VA)  
LINEAR INTERPOLATION  
BETWEEN VELOCITY FUNCTIONS
7. STACK 4800 %
8. TIME VARIANT FILTER (Origin sea bottom)
9. TRACE EQUALIZATION
10. ANALOG DISPLAY

FIELD RECORDING (SAMPLING RATE 4%)

Ship GLORITA TIDE Shooting date: NOV/1975

Field recorder SN 338 Filter: V8 125

Floating point, sampling 4 ms

Streamer 2400 m (depth 10 m)

Groups 48 (group interval 50 m)

Geophones type HC 201 nr 48 / group

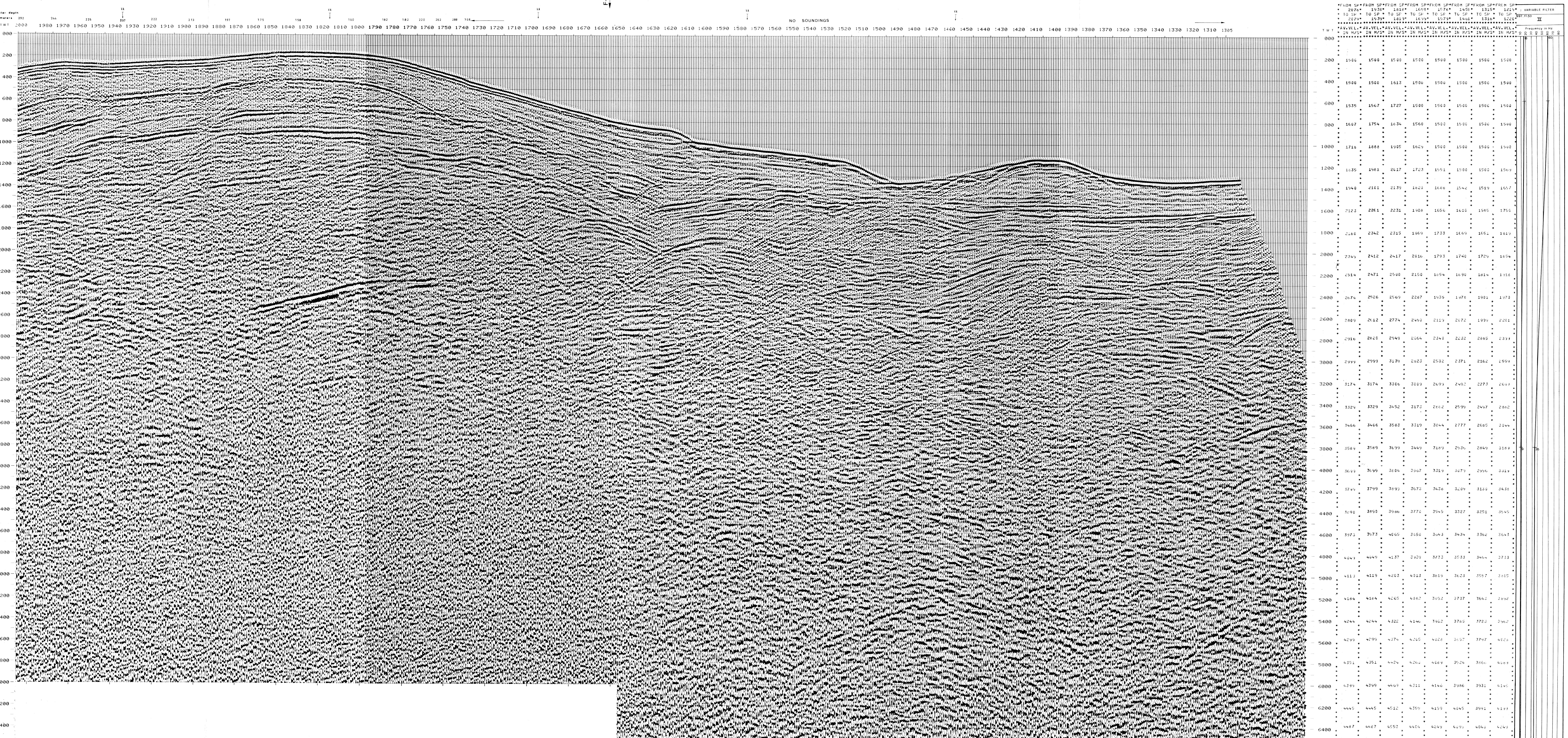
48 fold coverage

Energy source VAPORCHOC (depth 6 m)

SP (r) Streamer 748

330 m MOTOROLA positioning

00252



NO SOUNDINGS

DEPTH (m)	2076	1936	1814	1698	1576	1458	1335	1219	VARIABLE FILTER
000	1500	1500	1500	1500	1500	1500	1500	1500	
200	1500	1500	1613	1500	1500	1500	1500	1500	
400	1535	1567	1727	1500	1500	1500	1500	1500	
600	1607	1754	1834	1560	1500	1500	1500	1500	
800	1718	1888	1905	1624	1500	1500	1500	1500	
1000	1835	1981	2017	1703	1551	1500	1500	1500	
1200	1940	2101	2139	1820	1600	1540	1519	1500	
1400	2123	2261	2231	1908	1650	1610	1585	1500	
1600	2180	2342	2315	1969	1733	1660	1651	1600	
1800	2345	2412	2417	2010	1793	1740	1729	1650	
2000	2514	2471	2500	2150	1854	1830	1814	1750	
2200	2674	2526	2569	2267	1935	1976	1981	1970	
2400	2809	2612	2774	2490	2111	2172	1939	2001	
2600	2916	2620	2949	2654	2340	2332	2085	2334	
2800	2999	2999	3134	2823	2532	2371	2162	2594	
3000	3174	3174	3306	3009	2699	2492	2273	2634	
3200	3324	3329	3452	3171	2862	2599	2497	2802	
3400	3466	3466	3583	3310	3044	2777	2685	3044	
3600	3589	3589	3699	3440	3189	2926	2849	3184	
3800	3699	3699	3804	3567	3319	3079	2996	3324	
4000	3799	3799	3899	3670	3426	3189	3100	3436	
4200	3890	3890	3996	3770	3545	3327	3251	3545	
4400	3973	3973	4099	3858	3643	3434	3362	3643	
4600	4049	4049	4137	3929	3733	3533	3460	3733	
4800	4117	4119	4203	4013	3819	3623	3557	3815	
5000	4184	4184	4260	4082	3892	3707	3642	3892	
5200	4244	4244	4322	4140	3962	3789	3720	3962	
5400	4299	4299	4374	4200	4024	3857	3797	4024	
5600	4351	4351	4424	4260	4089	3926	3860	4089	
5800	4399	4399	4469	4311	4140	3986	3931	4140	
6000	4445	4445	4512	4359	4199	4045	3991	4199	
6200	4487	4487	4553	4405	4249	4099	4040	4249	