

997-11-50

AGIP

OFFSHORE ITALIA
ZONA F

DIGITAL PROCESSING P5

TIMEORIGIN: Source and cable depth

STACK 4800's

Boat motion

428

Date APRIL 2 '76

Checked

PLC

- 1 AMPLITUDE RECOVERY
- 2 WARP STABILIZATION BY VAPORCHOC SIGNAL
- 3 WATER
- 4 DECONVOLUTION 240 m
- 5 VELOCITY ANALYSIS (VM)
- 6 NMO CORRECTIONS
- 7 LINEAR INTERPOLATION BETWEEN VELOCITY FUNCTIONS

- 7 STACK 4800'S
- 8 TIME VARIANT FILTER (DRIFT SEA BOTTOM)
- 9 TRACE REGULARIZATION
- 10 ANALOG DISPLAY

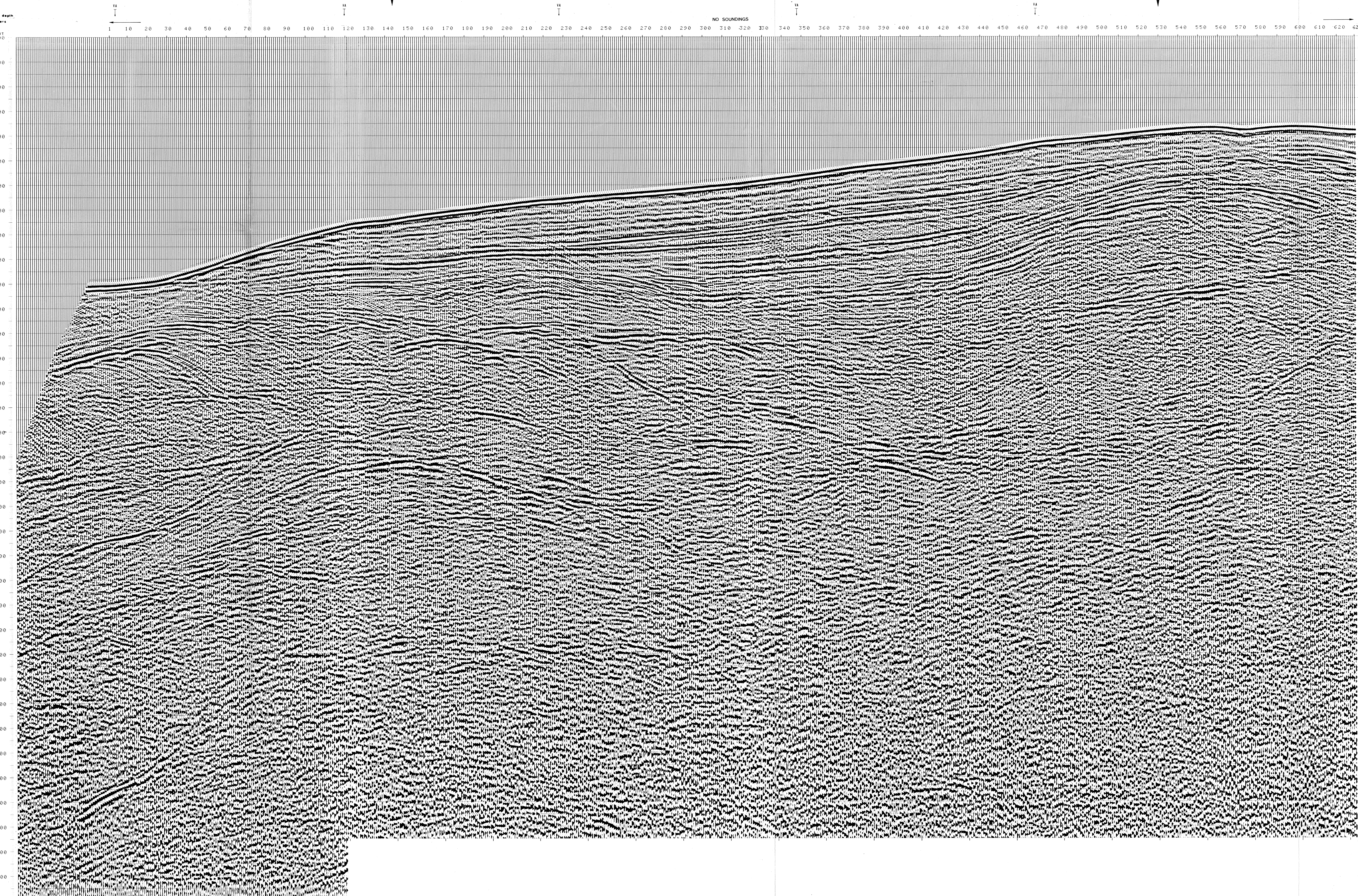
FIELD RECORDING
SAMPLING RATE 48'S

Ship GLORITA TIDE Shooting date NOV 1975
Field recorder SN 338 filter V8-125
Floating point sampling 4 ms

Streamer 2400 m (depth 10 m)
Groups 48 (group interval 50 m)
Geophones type HC201 n 48/group
48Fold coverage

Energy source VAPORCHOC (depth 10 m)
330m MOTOROLA positioning

00274



TIME	1*	11*	22*	34*	46*	58*	70*
TO SP	TO SP	TO SP	TO SP	TO SP	TO SP	TO SP	TO SP
IN N/S*	IN N/S*	IN N/S*	IN N/S*	IN N/S*	IN N/S*	IN N/S*	IN N/S*
000							
200	1500	1500	1500	1500	1500	1500	1500
400	1500	1500	1500	1500	1500	1500	1500
600	1500	1500	1500	1500	1500	1500	1500
800	1500	1500	1500	1500	1500	1536	1500
1000	1500	1500	1500	1500	1562	1612	1578
1200	1500	1500	1500	1539	1621	1680	1635
1400	1500	1500	1521	1572	1704	1758	1686
1600	1500	1500	1567	1643	1814	1868	1731
1800	1500	1500	1615	1704	1930	1985	1796
2000	1500	1648	1684	1785	1985	2086	1865
2200	1550	1700	1760	1851	2029	2180	1920
2400	1593	1768	1840	1957	2168	2289	2303
2600	1634	1874	1911	2070	2286	2466	2542
2800	1764	2086	2168	2233	2418	2618	2699
3000	1916	2121	2272	2354	2548	2749	2835
3200	1999	2242	2370	2488	2672	2918	3031
3400	2244	2405	2501	2692	2781	3067	3215
3600	2462	2587	2617	2874	2945	3199	3369
3800	2662	2750	2785	3037	3112	3336	3497
4000	2844	2896	2936	3183	3263	3459	3612
4200	2997	3028	3072	3314	3399	3571	3716
4400	3124	3153	3196	3427	3509	3672	3811
4600	3241	3268	3309	3530	3608	3765	3897
4800	3347	3373	3413	3625	3699	3849	3977
5000	3445	3470	3508	3712	3783	3927	4049
5200	3536	3560	3597	3792	3861	3999	4117
5400	3620	3643	3678	3867	3933	4066	4179
5600	3698	3720	3754	3936	3999	4128	4237
5800	3770	3792	3824	4000	4062	4186	4291
6000	3838	3859	3890	4060	4119	4239	4341
6200	3901	3921	3952	4116	4174	4290	4388
6400	3960	3980	4010	4169	4224	4337	4432
6600	4016	4035	4064	4218	4272	4381	4474
6800	4068	4087	4115	4265	4317	4423	4513
7000	4118	4136	4163	4308	4359	4462	4549

VARIABLE FILTER
997-1150
II
Frequencies in Hz
0 20 40 60 80