

997-11-50 **AGIP**

OFFSHORE ITALIA
ZONA F

SW 2401 LINEA F.75.59 NE 2944

1 km

COMPAGNIE GÉNÉRALES DE GÉOPHYSIQUE

DIGITAL PROCESSING P5

TIME ORIGIN: Source and cable depth

STACK 4800%

Boat motion

554 Date: MAY 14 '76 Checked: RJ6

PROCESSING (SAMPLING RATE 4 m/s)

- AMPLITUDE RECOVERY
- WAPCO stabilization by vaporchoc signal
- MUTING
- DECONVOLUTION 240 ms
Window: 500 - 2300 ms J. Below
1900 - 3600 ms sea bottom
- VELOCITY ANALYSIS (VA)
(LINEAR INTERPOLATION BETWEEN VELOCITY FUNCTIONS)
- RWD CORRECTIONS
- STACK 4800%
- TIME VARIANT FILTER (origin sea bottom)
- TRACE EQUALIZATION
- ANALOG DISPLAY

FIELD RECORDING (SAMPLING RATE 4 m/s)

Ship GLORITA TIDE Shooting date DEC 1975

Field recorder SN 338 filter V8 125

Floating point, sampling 4 ms

Streamer 2400 m (depth 10 m)

groups 48 (group interval 50 m)

Geophones type HC 201 n° 48 / group

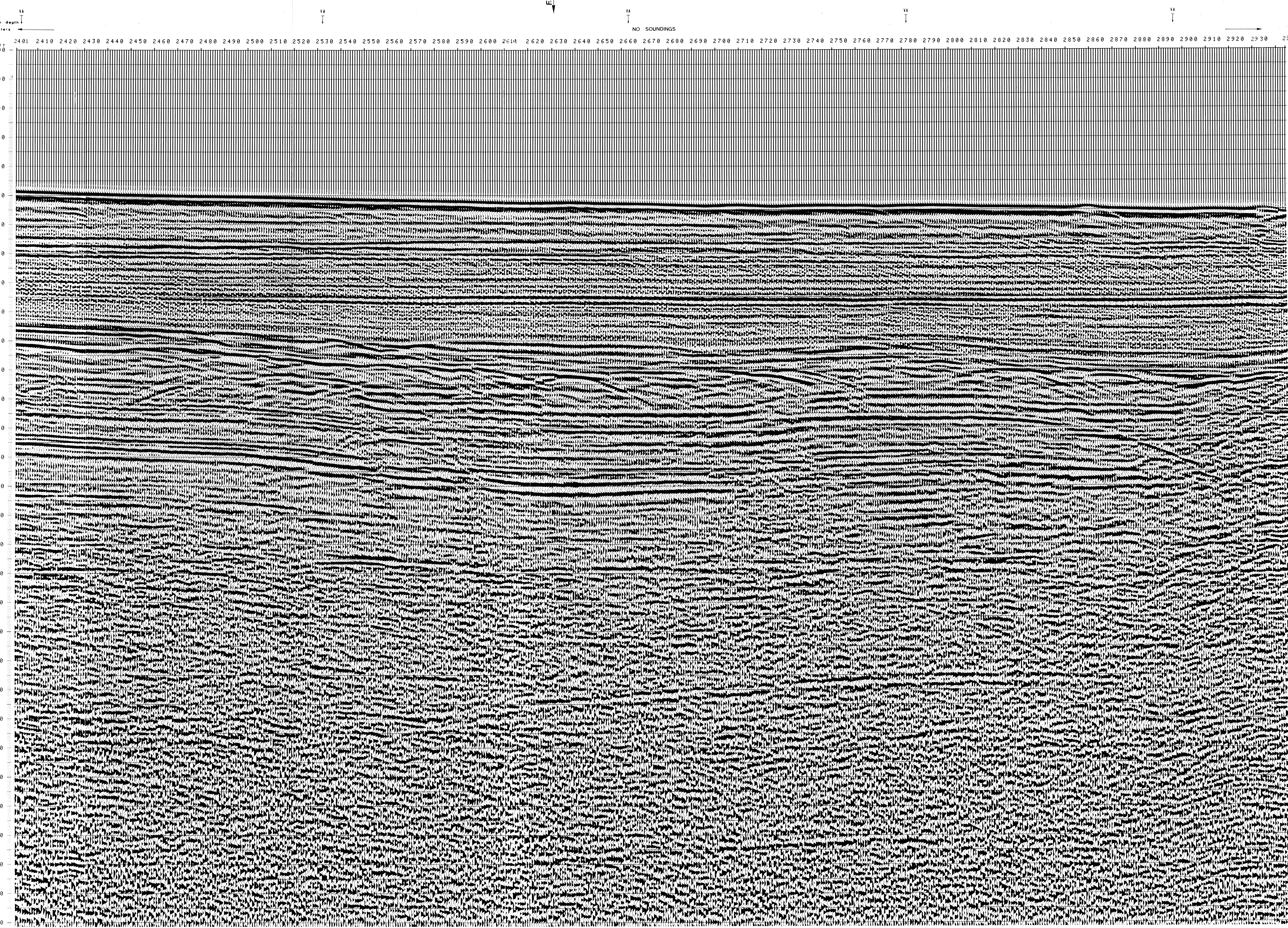
48 fold coverage

Energy source VAPORCHOC (depth 6 m)

SP Tri Streamer Tr 48

310m SHORAN positioning

00266



TWT	2275	2402	2531	2662	2781	2895
AV. VEL.	AV. VEL.	AV. VEL.	AV. VEL.	AV. VEL.	AV. VEL.	AV. VEL.
IN M/S	IN M/S	IN M/S	IN M/S	IN M/S	IN M/S	IN M/S
000						
200	1500	1500	1500	1500	1509	1500
400	1500	1500	1500	1500	1509	1500
600	1500	1500	1500	1500	1509	1500
800	1500	1500	1500	1500	1509	1500
1000	1524	1505	1500	1500	1509	1500
1200	1586	1537	1545	1539	1522	1524
1400	1658	1611	1567	1579	1574	1570
1600	1759	1677	1650	1644	1659	1650
1800	1846	1736	1723	1706	1721	1694
2000	1942	1892	1823	1792	1764	1770
2200	2085	1936	1941	1914	1881	1850
2400	2212	2223	2086	2060	2055	1984
2600	2447	2434	2254	2221	2268	2143
2800	2667	2534	2465	2449	2445	2399
3000	2857	2950	2859	2863	2881	2701
3200	3133	3178	3093	2970	2850	2953
3400	3365	3379	3299	3083	3071	3167
3600	3544	3558	3482	3278	3267	3358
3800	3705	3716	3646	3453	3442	3529
4000	3850	3862	3794	3610	3600	3682
4200	3981	3993	3928	3753	3743	3821
4400	4100	4111	4049	3882	3873	3947
4600	4208	4219	4180	4000	3991	4063
4800	4308	4319	4262	4109	4100	4168
5000	4400	4410	4355	4208	4200	4266
5200	4484	4494	4441	4300	4292	4355
5400	4563	4572	4521	4385	4378	4436
5600	4635	4644	4596	4464	4457	4516
5800	4703	4712	4665	4538	4531	4587
6000	4766	4775	4734	4607	4600	4655