

997-11-50 **AGIP**

OFFSHORE ITALIA
ZONA F

SW 610 LINEA F-75-57 NE 1

1 km

COMPAGNIE GÉNÉRALES DE GÉOPHYSIQUE

DIGITAL PROCESSING P5
TIME ORIGIN: Source and cable depth
STACK 4800%
Boat motion

445 Date: APRIL 9 '76 Checked

PROCESSING
SAMPLING RATE 4 m/s

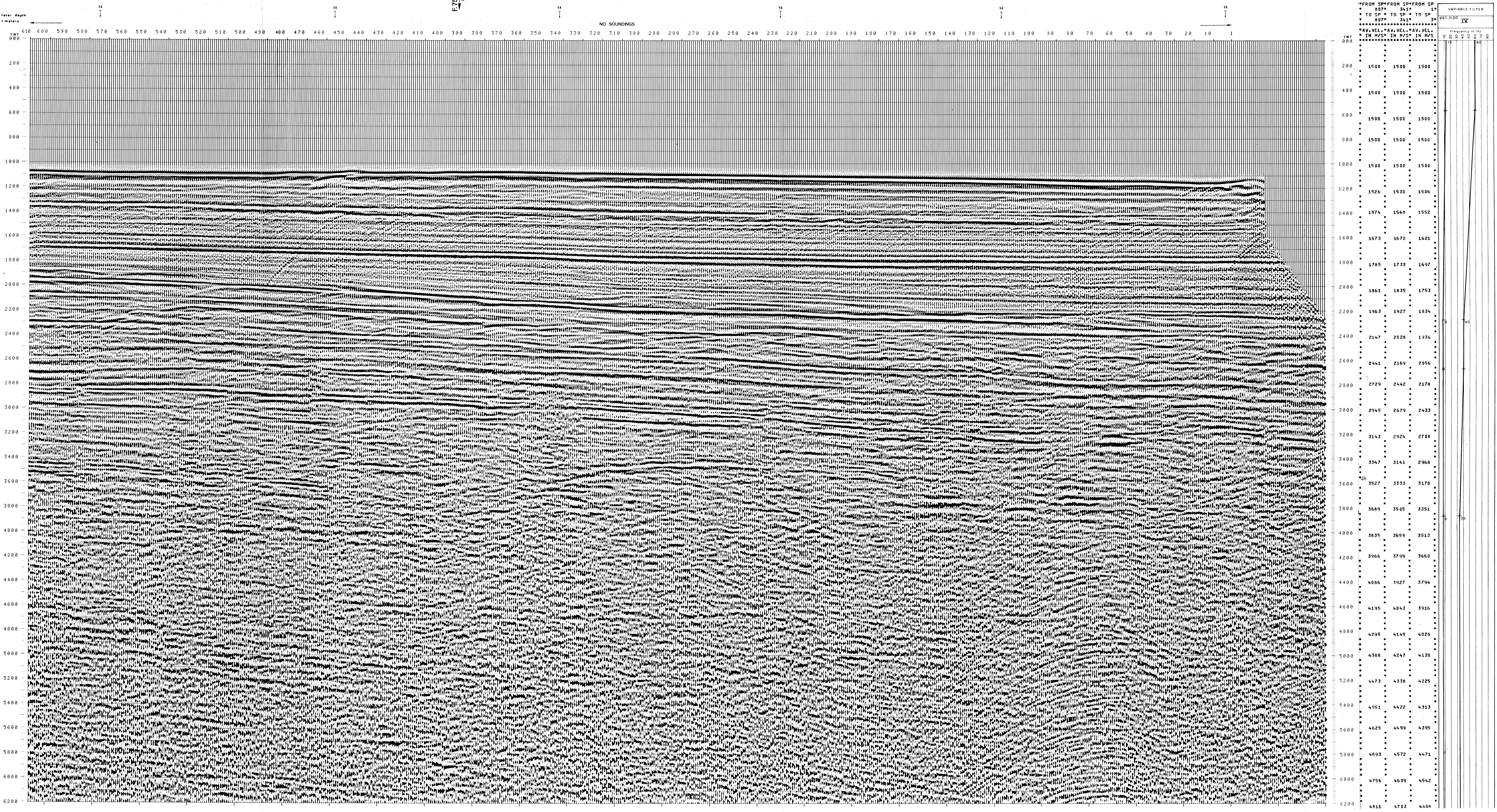
- AMPLITUDE RECOVERY
- WAPCO stabilization by vaporchoc signal
- MUTING
- DECONVOLUTION 240 ms
WINDOW: 500 - 2300 ms Below
1900 - 3600 ms Top bottom
- VELOCITY ANALYSIS (VA)
- KMO CORRECTIONS
(LINEAR INTERPOLATION
BETWEEN VELOCITY FUNCTIONS)
- STACK 4800 %
- TIME VARIANT FILTER (Origin sea bottom)
- TRACE EQUALIZATION
- ANALOG DISPLAY

FIELD RECORDING
SAMPLING RATE 4 m/s

Ship GLORITA TIDE Shooting date: DEC /1975
Field recorder SN 338 filter V8.125
Floating point, sampling 4 ms
Streamer 2400 m (Depth 19 m)
Groups 48 (group interval 50 m)
Geophones type HC 201 n° 48 / group
48Fold coverage
Energy source VAPORCHOC (Depth 6 m)
SP 1st Streamer Tr 48
310m SHORAN positioning

00:51

F75-026
-871



997-11-50

VARIABLE FILTER

IV

Frequency in Hz

2 3 5 10 20 30 50 60