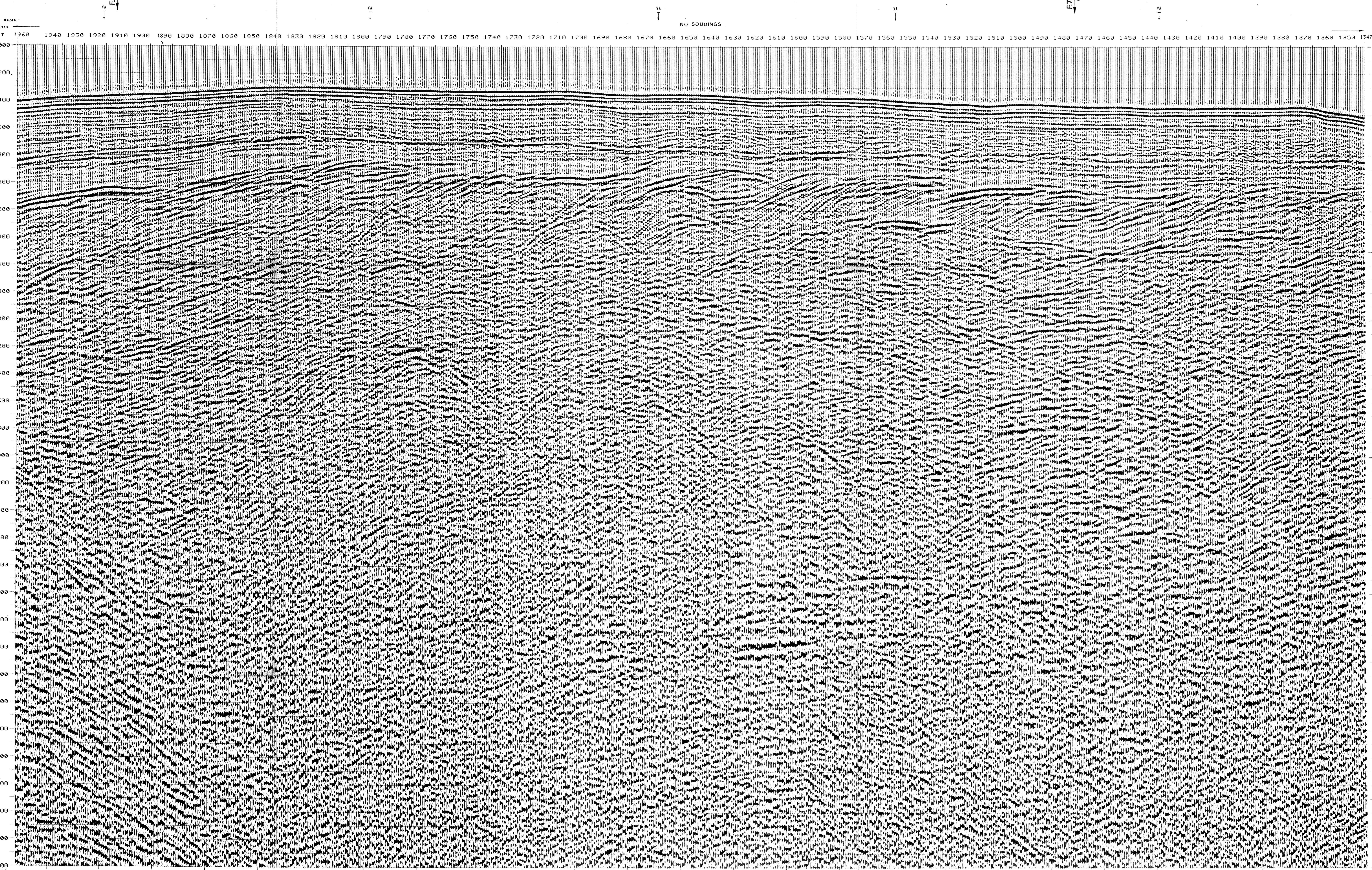


997-11-50 AGIP OFFSHORE ITALIA ZONA F NW 1960 LINEA F-75.56 SE 1347

DIGITAL PROCESSING P5 TIME ORIGIN: Source and cable depth STACK 4800	1 AMPLITUDE RECOVERY	7 STACK 4800 %
	2 WAPES stabilization by vaporchoc signal	8 TIME VARIANT FILTER (origin sea bottom)
3 MUTING	9 TRACE EQUALIZATION	10 ANALOG DISPLAY
4 DECONVOLUTION 240 ms Window: 500 - 2300 ms J Below 1900 - 3600 ms Tera bottom	FIELD RECORDING SAMPLING RATE 4 Hz Ship: GLORITA TIDE Shooting date: NOV 1975 Field recorder: SN 338 filter: V8 125 Floating point: sampling 4 ms Streamer: 2400 m (depth: 19 m) groups: 48 (group interval 50 m) Geophones type: MC 201 n° 48 / group 48Fold coverage Energy source: VAPORCHOC (depth: 6 m) SP: 1-1 Streamer: 1-48 330 m MOTOROLA positioning	
5 VELOCITY ANALYSIS (VA) 6 NMO CORRECTIONS LINEAR INTERPOLATION BETWEEN VELOCITY FUNCTIONS	374 Date: FEB 24 76 Checked	

00248



	FROM SP*	FROM SP*	FROM SP*	FROM SP*	FROM SP*	FROM SP*	FROM SP*
000	1500	1500	1500	1500	1500	1500	1500
200	1500	1531	1545	1531	1500	1500	1500
400	1500	1609	1609	1604	1566	1566	1500
600	1609	1676	1740	1699	1647	1629	1608
800	1702	1719	1857	1762	1703	1739	1699
1000	1829	1985	2093	2031	1913	1852	1763
1200	1965	2145	2278	2250	2042	2000	1976
1400	2145	2290	2378	2442	2169	2265	2164
1600	2290	2444	2590	2613	2502	2575	2303
1800	2444	2604	2795	2611	2799	2691	2677
2000	2604	2776	2774	2952	2902	2840	2449
2200	2776	2852	2927	2950	3079	3084	2999
2400	2852	2990	3093	3276	3266	3174	2794
2600	2990	3194	3250	3292	3456	3447	3362
2800	3194	3368	3420	3459	3612	3604	3524
3000	3368	3520	3568	3606	3749	3741	3667
3200	3520	3654	3700	3735	3869	3862	3792
3400	3654	3773	3816	3843	3977	3970	3904
3600	3773	3880	3921	3952	4073	4066	4003
3800	3880	3976	4015	4044	4159	4153	4093
4000	3976	4063	4100	4128	4237	4231	4174
4200	4063	4142	4177	4204	4306	4302	4248
4400	4142	4214	4247	4273	4373	4367	4316
4600	4214	4280	4312	4337	4432	4427	4376
4800	4280	4341	4372	4395	4487	4482	4434
5000	4341	4397	4426	4443	4530	4533	4467
5200	4397	4449	4477	4499	4584	4580	4536
5400	4449	4497	4525	4546	4628	4623	4581
5600	4497	4542	4569	4589	4668	4664	4623
5800	4542	4584	4610	4629	4706	4702	4662
6000	4584						