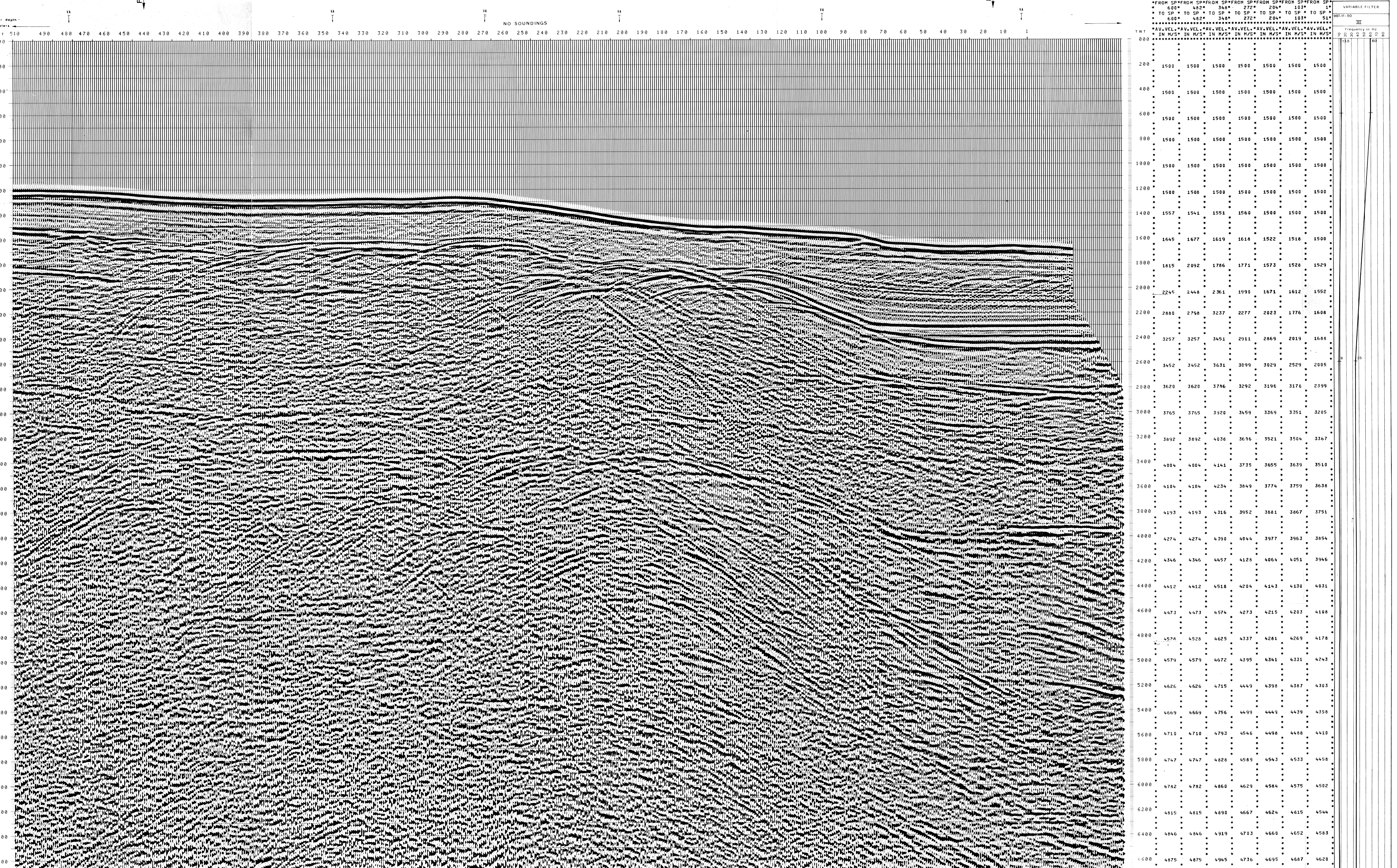


997-11-50		<b>AGIP</b>		PROCESSING SAMPLING RATE 4MS		FIELD RECORDING SAMPLING RATE 4MS	
OFFSHORE ITALIA ZONA F		DIGITAL PROCESSING P5		1 AMPLITUDE RECOVERY		Ship GLORITA TIDE Shooting date DEC/1975	
NW 510		TIME ORIGIN: Source and cable depth		2 WAFCC stabilization by vaporchoc signal		Field recorder SN338 filter 1/8 125	
SE 1		STACK 4800%		3 NOTING		Floating point sampling 4 ms	
1 km		Boat motion		4 DECONVOLUTION 240 ms WIDENET 500 - 2300 ms J Below 1900 - 3600 ms sea bottom		Streamer 2400 m depth 18 m groups 48 (group interval 50 m)	
COMPAGNIE GENERALE DE GEOPHYSIQUE		479 Date: APRIL 22, 76 Checked		5 VELOCITY ANALYSIS (VA)		Geophones type HC 201 n° 48 / group	
				6 NMO CORRECTIONS		48Fold coverage	
				LINEAR INTERPOLATION BETWEEN VELOCITY FUNCTIONS		Energy source VAPORCHOC (depth 6m)	
						SF 101 Streamer 1748 320m MOTOROLA positioning	

00212



TWT	600*	482*	346*	272*	204*	103*	1*
	TO SP*	TO SP*	TO SP*	TO SP*	TO SP*	TO SP*	TO SP*
	600*	482*	346*	272*	204*	103*	51*
	AV. VEL. IN M/S*	AV. VEL. IN M/S*	AV. VEL. IN M/S*	AV. VEL. IN M/S*	AV. VEL. IN M/S*	AV. VEL. IN M/S*	AV. VEL. IN M/S*
000	1500	1500	1500	1500	1500	1500	1500
200	1500	1500	1500	1500	1500	1500	1500
400	1500	1500	1500	1500	1500	1500	1500
600	1500	1500	1500	1500	1500	1500	1500
800	1500	1500	1500	1500	1500	1500	1500
1000	1500	1500	1500	1500	1500	1500	1500
1200	1500	1500	1500	1500	1500	1500	1500
1400	1557	1541	1551	1560	1500	1500	1500
1600	1645	1677	1619	1610	1522	1510	1500
1800	1815	2092	1786	1771	1573	1528	1529
2000	2245	2448	2361	1990	1671	1612	1552
2200	2880	2798	3237	2277	2023	1776	1608
2400	3257	3257	3451	2911	2869	2019	1688
2600	3452	3452	3631	3099	3029	2529	2005
2800	3620	3620	3736	3292	3196	3176	2399
3000	3765	3765	3920	3459	3369	3351	3205
3200	3892	3892	4038	3636	3521	3504	3367
3400	4004	4004	4141	3735	3655	3639	3510
3600	4104	4104	4234	3849	3774	3759	3638
3800	4193	4193	4318	3952	3881	3867	3751
4000	4274	4274	4390	4044	3977	3963	3854
4200	4346	4346	4457	4128	4064	4051	3946
4400	4412	4412	4518	4204	4143	4130	4031
4600	4473	4473	4574	4273	4215	4203	4100
4800	4528	4528	4625	4337	4281	4269	4178
5000	4579	4579	4672	4395	4341	4331	4243
5200	4626	4626	4715	4449	4398	4387	4303
5400	4669	4669	4756	4499	4449	4439	4358
5600	4710	4710	4793	4546	4498	4488	4410
5800	4747	4747	4828	4589	4543	4533	4458
6000	4782	4782	4860	4629	4584	4575	4502
6200	4815	4815	4890	4667	4624	4615	4544
6400	4846	4846	4919	4703	4660	4652	4583
6600	4875	4875	4945	4736	4695	4687	4620