

997-11-50 **AGIP**

OFFSHORE ITALIA  
ZONA F

SW 1 LINEA F.75-43 NE 474

1 km

COMPAGNIE GENERALE DE GEOPHYSIQUE

DIGITAL PROCESSING P5  
TIME ORIGIN: Source and cable depth

STACK 4800 %  
Boat motion

688 Date: JUNE 21/76 Checked

PROCESSING SAMPLING RATE 4m/s

- 1 AMPLITUDE RECOVERY
- 2 WAPCO stabilization by vaporchoc signal
- 3 MUTING
- 4 DECONVOLUTION 240 ms  
windows 500 2300 ms | Below  
1900 2600 ms | Sea bottom
- 5 VELOCITY ANALYSIS (VA)  
(LINEAR INTERPOLATION  
BETWEEN VELOCITY FUNCTIONS)
- 6 NMO CORRECTIONS

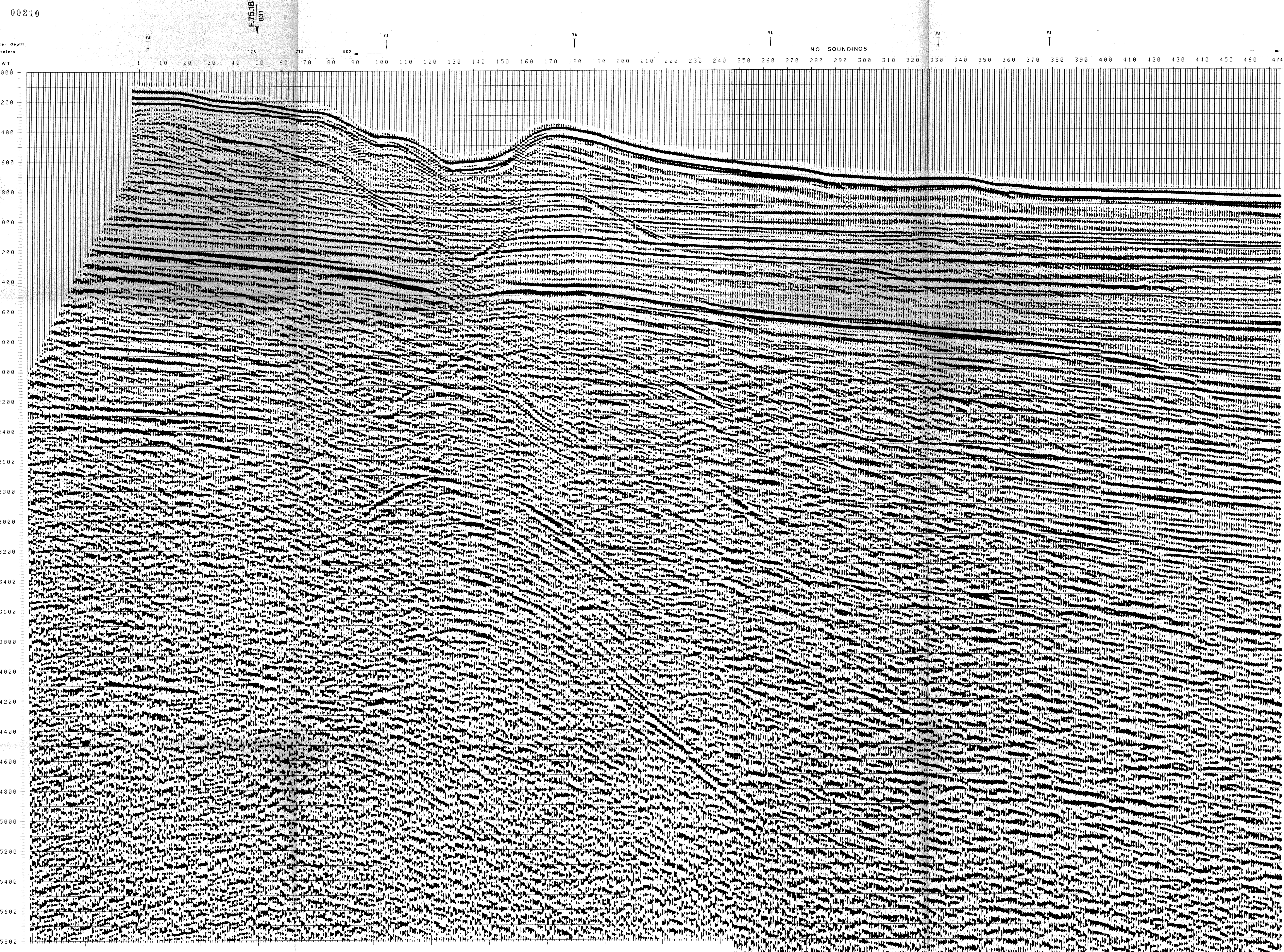
7 STACK 4800 %

- 8 TIME VARIANT FILTER (origin sea bottom)
- 9 TRACE EQUALIZATION
- 10 ANALOG DISPLAY

FIELD RECORDING SAMPLING RATE 4m/s

Ship GLORITA TIDE Shooting date: DEC/1975  
Field recorder SN 338 filter 1/8 125  
Floating point - sampling 4 ms  
Streamer 2400 m (depth 19 m)  
groups 48 (group interval 50 m)  
Geophones type HC 201 n° 48 / group

48Fold coverage  
Energy source VAPORCHOC (depth 19 m)  
SP 171 Streamer 1/48  
310R SHORAN positioning



TWT	SP*FROM 1*	SP*FROM 11*	SP*FROM 161*	SP*FROM 26*	SP*FROM 477*
000					
200	1500	1500	1500	1500	1500
400	1601	1500	1527	1500	1500
600	1772	1619	1553	1500	1500
800	1680	1739	1611	1558	1500
1000	1943	1811	1684	1624	1554
1200	1992	1909	1737	1706	1589
1400	2329	2028	1788	1806	1662
1600	2663	2326	1946	1882	1709
1800	2884	2561	2145	2047	1795
2000	3109	2720	2292	2210	1880
2200	3427	3032	2632	2598	2094
2400	3691	3306	2968	2926	2419
2600	3915	3599	3249	3207	2662
2800	4107	3776	3488	3449	3140
3000	4273	3964	3696	3659	3376
3200	4418	4129	3877	3843	3577
3400	4547	4274	4037	4005	3755
3600	4661	4404	4180	4149	3913
3800	4763	4519	4307	4278	4054
4000	4854	4623	4422	4394	4182
4200	4938	4717	4525	4499	4297
4400	5013	4803	4620	4595	4402
4600	5082	4881	4706	4682	4497
4800	5145	4953	4785	4762	4585
5000	5203	5018	4857	4835	4665
5200	5257	5079	4924	4903	4740
5400	5307	5136	4986	4966	4809
5600	5353	5188	5044	5024	4873
5800	5396	5237	5098	5079	4932
6000	5436	5282	5148	5129	4988

VARIABLE FILTER

997-11-50 VII

FREQUENCY IN HZ

0 2 4 6 8 10 20 40 60 80 100