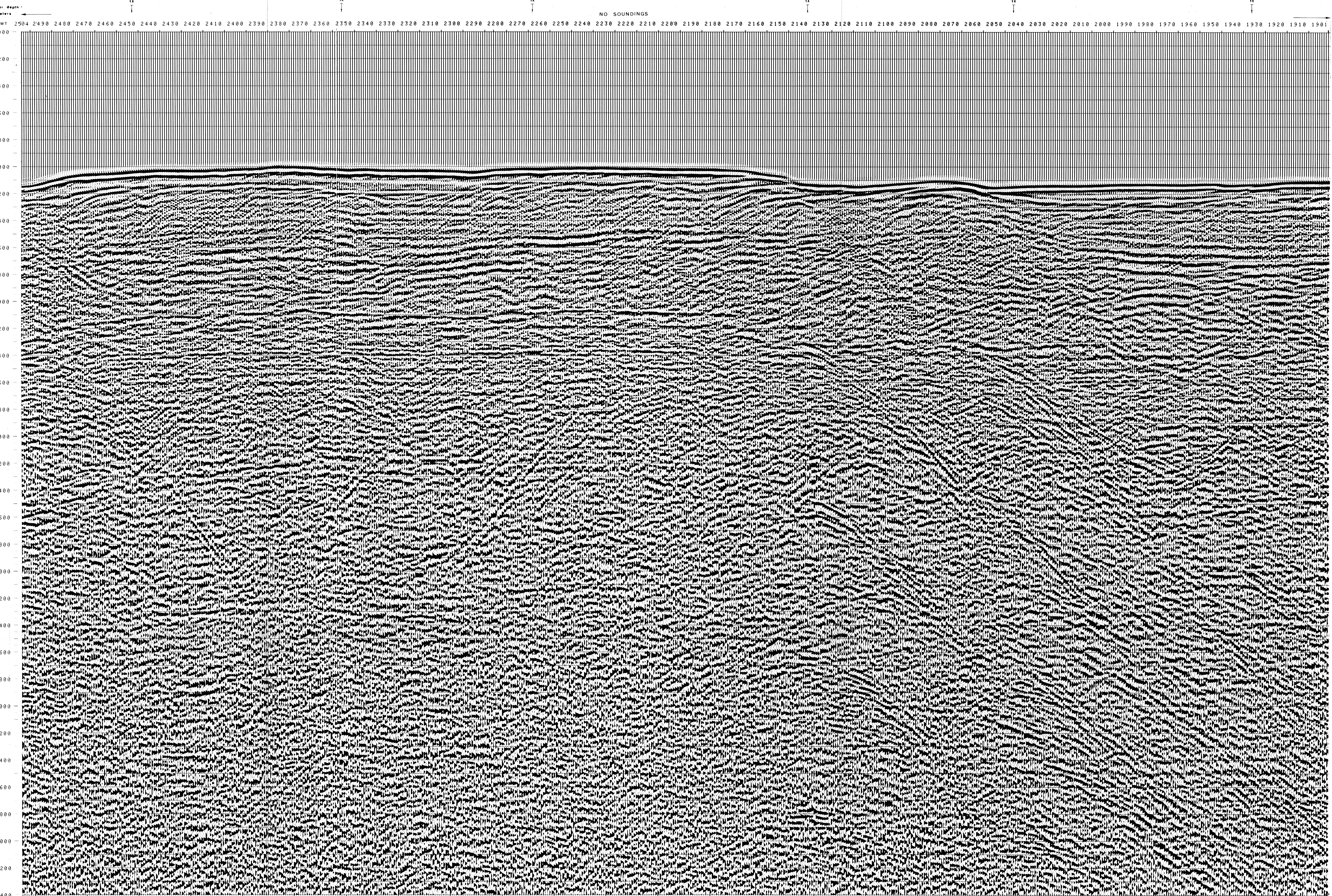


997-11-50		AGIP		PROCESSING SAMPLING RATE 4ms		FIELD RECORDING SAMPLING RATE 4ms	
OFFSHORE ITALIA ZONA F				DIGITAL PROCESSING P5			
NW 2504				SE F.75.42C(2)1901			
1 km				TIME ORIGIN: Source and cable depth			
COMPAGNIE GENERALE DE GEOPHYSIQUE				1 AMPLITUDE RECOVERY			
463				2 WAPC stabilization by vaporchoc signal			
Date: APRIL 12 '76				3 NOTING			
Checked: [Signature]				4 DECONVELOCITY 240 ms			
				5 VELOCITY ANALYSIS (VA)			
				6 NMO CORRECTIONS			
				7 STACK 4800 %			
				8 TIME VARIANT FILTER (Origin sea bottom)			
				9 TRACE EQUALIZATION			
				10 ANALOG DISPLAY			
				Ship GLORITA TIDE Shooting date: DEC/1975			
				Field recorder: SN 338 Filter: VB 125			
				Floating point: sampling 4 ms			
				Streamer: 2400 m (Depth 19 m)			
				Groups: 48 (group interval 50 m)			
				Geophones type: HC201 n° 48 / group			
				48fold coverage			
				Energy source: VAPORCHOC (Depth 6 m)			
				SP Tr1 Streamer Tr48			
				310m MOTOROLA positioning			

00205

F.75.065  
286

F.75.063  
401



FROM SP*	FROM SP*	TO SP*	TO SP*	AV. VEL. IN M/S*	AV. VEL. IN M/S*
2140	1874	2140	1935	1500	1500
2140	1935	2140	1990	1500	1500
2140	1990	2140	2045	1500	1500
2140	2045	2140	2100	1555	1531
2140	2100	2140	2155	1737	1598
2140	2155	2140	2210	1894	1769
2140	2210	2140	2265	2034	2115
2140	2265	2140	2320	2295	2556
2140	2320	2140	2375	2756	3082
2140	2375	2140	2430	3251	3358
2140	2430	2140	2485	3493	3592
2140	2485	2140	2540	3701	3793
2140	2540	2140	2595	3881	3966
2140	2595	2140	2650	4038	4118
2140	2650	2140	2705	4177	4253
2140	2705	2140	2760	4301	4372
2140	2760	2140	2815	4411	4479
2140	2815	2140	2870	4510	4575
2140	2870	2140	2925	4600	4662
2140	2925	2140	2980	4682	4741
2140	2980	2140	3035	4757	4813
2140	3035	2140	3090	4825	4879
2140	3090	2140	3145	4888	4940
2140	3145	2140	3200	4946	4996
2140	3200	2140	3255	5000	5048
2140	3255	2140	3310	5050	5106
2140	3310	2140	3365	5097	5141
2140	3365	2140	3420	5140	5183
2140	3420	2140	3475	5181	5222
2140	3475	2140	3530	5219	5259