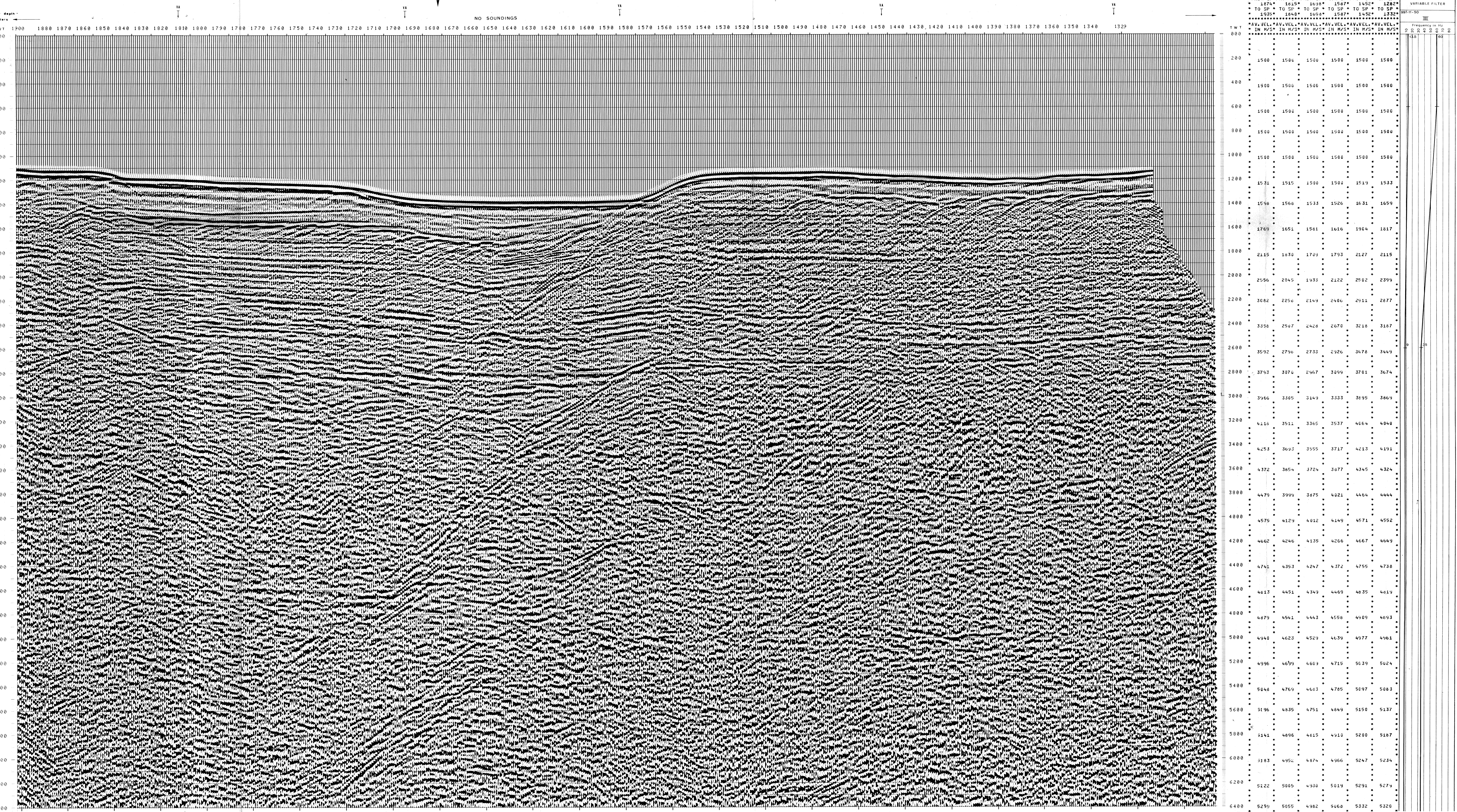


997-11-50	AGIP	PROCESSING SAMPLING RATE 4ms		FIELD RECORDING SAMPLING RATE 4ms
OFFSHORE ITALIA ZONA F		DIGITAL PROCESSING P5	1 AMPLITUDE RECOVERY	7 STACK 4800 %
NW 1900		TIME ORIGIN: Source and cable depth	2 WAPCOR (stabilization by vaporchoc signal)	8 TIME VARIANT FILTER (origie sea bottom)
SE F.75.42C @ 1329		STACK 4800 %	3 MUTING	9 TRACE EQUALIZATION
1 km		Boat motion	4 DECONVOLUTION 240 ms Window: 500 - 2300 ms @ Below 1900 - 3600 ms Sea bottom	10 ANALOG DISPLAY
COMPAGNIE GENERALE DE GEOPHYSIQUE		Date: APRIL 12, 76	5 VELOCITY ANALYSIS (VA)	Ship: GLORITA TIDE Shooting date: DEC/1975
462		Checked	6 SMI CORRECTIONS (LINEAR INTERPOLATION BETWEEN VELOCITY FUNCTIONS)	Field recorder: SN 338 filter: V8 125
				Floating point: sampling 4 ms
				Streamer: 2400 m (depth 19 m)
				Geophones type: HC 201 n° 48 / group
				48 Fold coverage
				Energy source: VAPORCHOC (depth 6 m)
				SP 11 Streamer 17 48
				310m MOTOROLA positioning

00204

F.75.061
1/75



TWT	1874*	1625*	1638*	1587*	1452*	1282*
000	1935*	1849*	1899*	1947*	1452*	1332*
200	1500	1500	1500	1500	1500	1500
400	1500	1500	1500	1500	1500	1500
600	1500	1500	1500	1500	1500	1500
800	1500	1500	1500	1500	1500	1500
1000	1500	1500	1500	1500	1500	1500
1200	1531	1515	1500	1500	1519	1533
1400	1598	1566	1533	1526	1631	1659
1600	1769	1651	1581	1616	1904	1817
1800	2115	1830	1709	1793	2127	2115
2000	2596	2045	1933	2122	2502	2399
2200	3082	2250	2149	2400	2911	2877
2400	3558	2507	2428	2670	3218	3187
2600	3592	2796	2733	2926	3478	3449
2800	3793	3076	2967	3099	3701	3674
3000	3966	3305	3149	3333	3895	3869
3200	4116	3511	3365	3537	4064	4040
3400	4258	3693	3555	3717	4213	4191
3600	4372	3854	3724	3877	4345	4324
3800	4479	3994	3875	4021	4464	4444
4000	4575	4129	4032	4149	4571	4552
4200	4662	4246	4135	4266	4667	4649
4400	4741	4353	4247	4372	4755	4738
4600	4813	4451	4349	4469	4835	4819
4800	4879	4541	4443	4558	4909	4893
5000	4940	4623	4529	4639	4977	4961
5200	4996	4699	4609	4715	5039	5024
5400	5048	4769	4683	4785	5097	5083
5600	5106	4835	4751	4849	5150	5137
5800	5141	4896	4815	4910	5200	5187
6000	5183	4952	4874	4966	5247	5234
6200	5222	5005	4930	5019	5291	5279
6400	5259	5055	4982	5068	5332	5320