

997-11-50

AGIP

OFFSHORE ITALIA
ZONA F

NW 1328 SE 638
LINEA F.75-42C

1 km

COMPAGNIE GÉNÉRALES DE GÉOLOGIE INDUSTRIELLE

DIGITAL PROCESSING P5

TIME ORIGIN: Source and cable depth

STACK 4800%

Boat motion ←

461 Date APRIL 12 76 Checked

PROCESSING SAMPLING RATE 4ms

1 AMPLITUDE RECOVERY

2 WAF (stabilization by vaporizer signal)

3 MDTING

4 DECONVOLUTION 240 ms
WISW 500 - 3300 ms J Below
1900 - 3600 ms Sea bottom

5 VELOCITY ANALYSIS (VA)

6 RMS CORRECTIONS
LINEAR INTERPOLATION
BETWEEN VELOCITY FUNCTIONS

7 STACK 4800%

8 TIME VARIANT FILTER (to give sea bottom)

9 TRACE EQUALIZATION

10 ANALOG DISPLAY

FIELD RECORDING SAMPLING RATE 4ms

Ship GLORITA TIDE Shooting date DEC 1975

Field recorder SN 338 Filter UB 125

Floating point sampling 4 ms

Streamer 2400 m (depth 18 m)

groups 48 (group interval 50 m)

Geophones type HC201 n° 48 / group

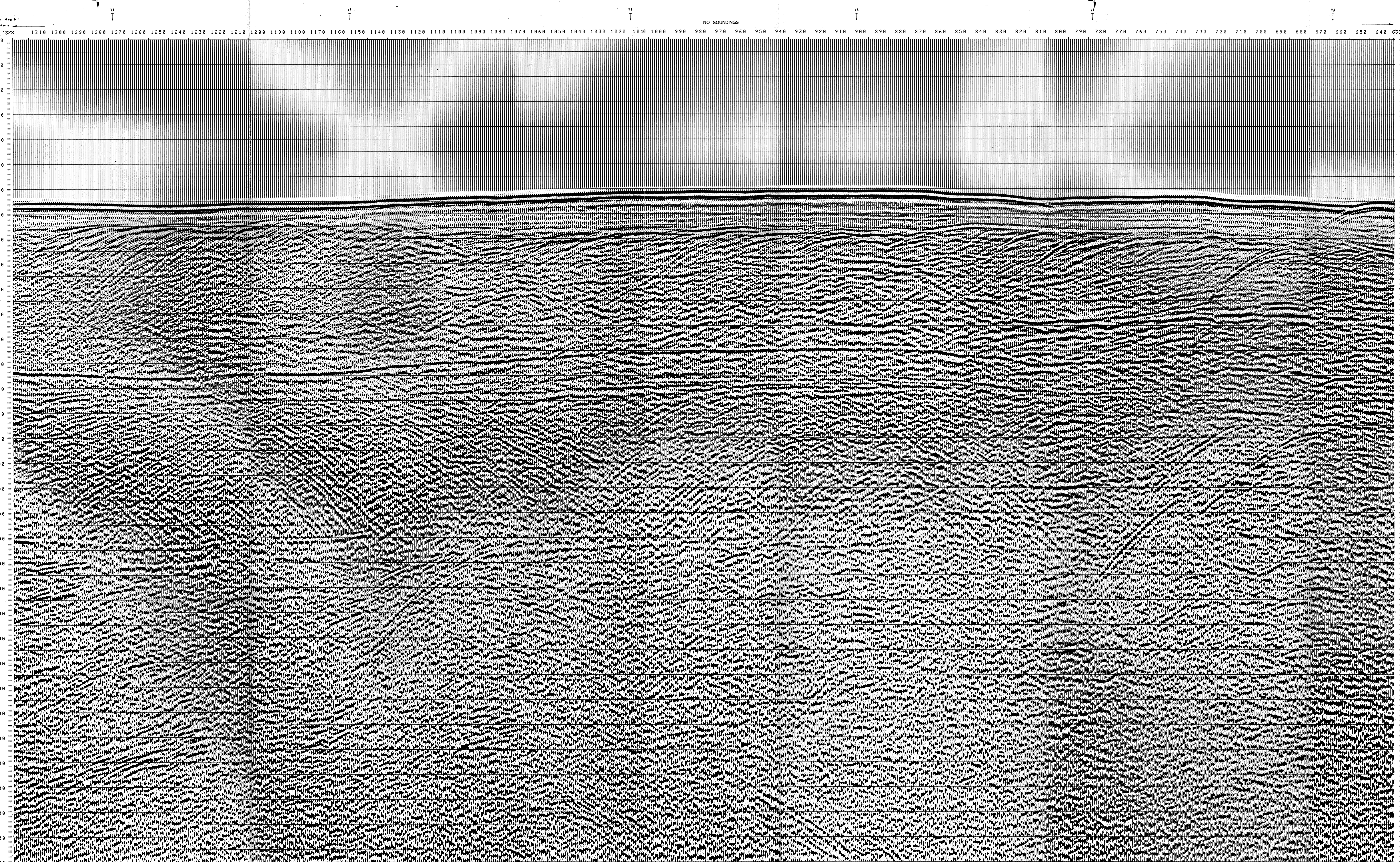
48Fold coverage

Energy source VAPORCHOC (depth 6m)

SP 1m Streamer 348

330m MOTOROLA positioning

00203



TWT	1277*	1155*	1015*	955*	787*	667*	546*
IN M/S*	IN M/S*	IN M/S*	IN M/S*	IN M/S*	IN M/S*	IN M/S*	IN M/S*
000							
200	1500	1500	1500	1500	1500	1500	1500
400	1500	1500	1500	1500	1500	1500	1500
600	1500	1500	1500	1500	1500	1500	1500
800	1500	1500	1500	1500	1500	1500	1500
1000	1500	1500	1500	1500	1500	1500	1500
1200	1500	1500	1500	1510	1500	1500	1500
1400	1549	1545	1569	1577	1554	1540	1533
1600	1722	1668	1680	1688	1640	1617	1573
1800	2106	1933	2023	1923	1975	1772	1673
2000	2540	2237	2375	2317	2333	2037	1929
2200	2749	2619	2682	2617	2802	2389	2140
2400	3004	2932	2941	2993	3141	2942	2628
2600	3219	3152	3161	3208	3345	3197	3004
2800	3483	3344	3350	3394	3526	3383	3204
3000	3563	3505	3513	3554	3672	3544	3377
3200	3703	3649	3656	3694	3805	3685	3528
3400	3826	3775	3782	3818	3923	3810	3662
3600	3936	3888	3894	3928	4027	3920	3781
3800	4034	3988	3994	4027	4120	4019	3887
4000	4122	4079	4085	4115	4204	4108	3983
4200	4202	4161	4166	4196	4280	4189	4069
4400	4274	4235	4240	4268	4349	4262	4148
4600	4341	4303	4308	4335	4412	4329	4220
4800	4402	4366	4370	4396	4470	4390	4285
5000	4457	4423	4428	4452	4523	4446	4346
5200	4509	4476	4480	4504	4572	4498	4402
5400	4557	4525	4529	4552	4618	4547	4454
5600	4601	4570	4575	4597	4660	4591	4502
5800	4643	4613	4617	4638	4699	4633	4546
6000	4681	4652	4656	4677	4736	4672	4588
6200	4717	4689	4693	4713	4770	4708	4627
6400	4751	4724	4728	4747	4802	4742	4664
6600	4783	4757	4760	4779	4833	4774	4698