

1 km

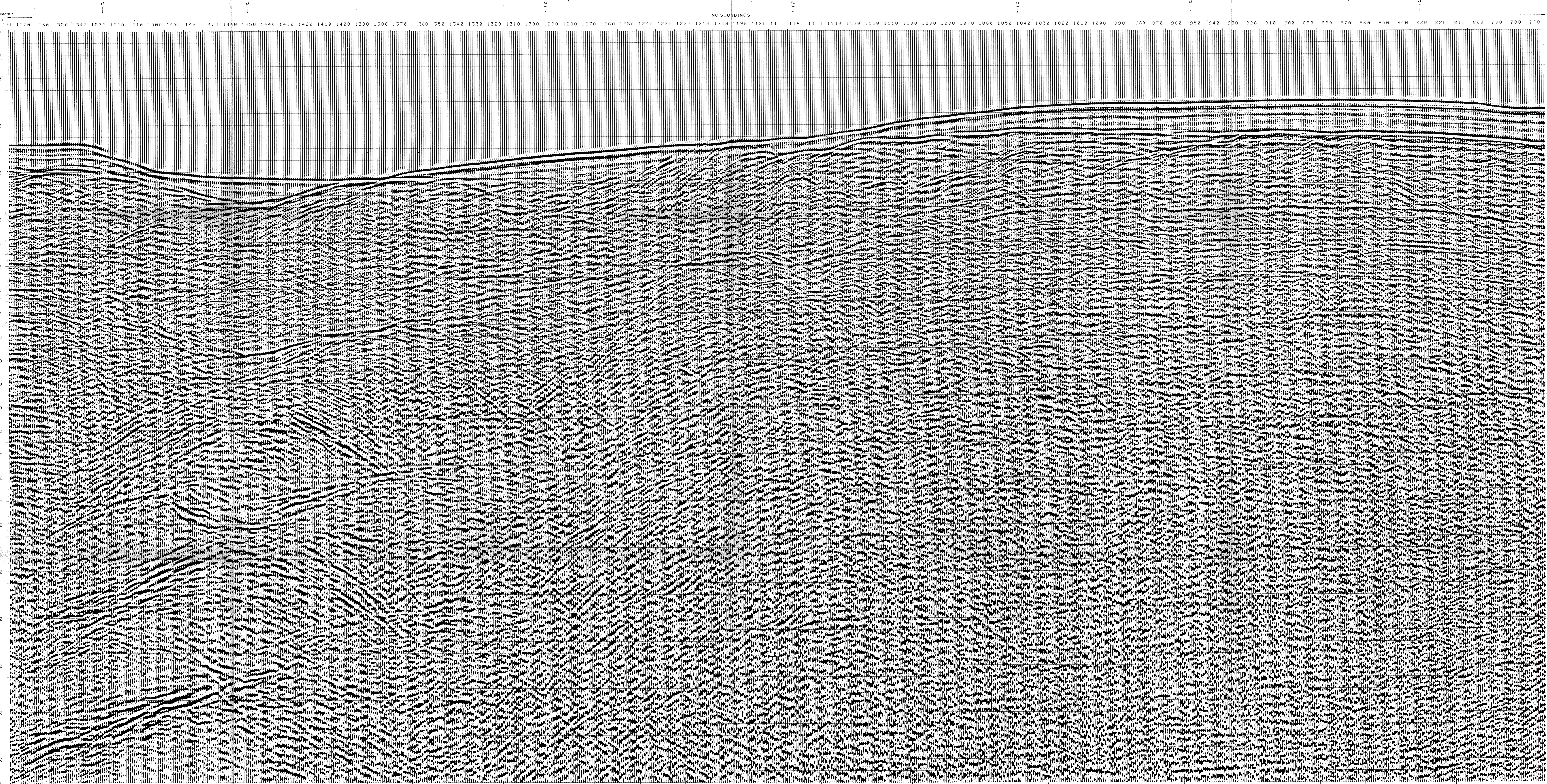


DIGITAL PROCESSING P5		FIELD RECORDING	
1 AMPLITUDE RECOVERY		7 STACK 4800	
2 WFLD stabilization by adaptive signal		8 TIME DEPENDENT FILTER (3/8th sea bottom)	
3 NOISE		9 TRACE EQUALIZATION	
4 DECONVOLUTION 240 ms		10 ANALOG DISPLAY	
5 VELOCITY ANALYSIS (M)		Ship: GLORITA TIDE Shooting date: DEC 1975	
6 RMS CORRECTIONS		Field recorder: SN 338 filter: VB 125	
LINEAR INTERPOLATION BETWEEN VELOCITY FUNCTIONS		Floating point: sampling 4 ms	
438		Streamers: 2400 m (depth 10 m)	
		Groups: 48 (group interval 50 m)	
		Geophones type: HC 201 n 48 / group	
		Offshore coverage	
		Energy source: VAPORCHOC (depth: 1 km)	
		3200 MOTOROLA positioning	

Stack 4800  
Date: APRIL 7 76  
Checked: [initials]

Stack 4800  
Date: APRIL 7 76  
Checked: [initials]

00201



100	1100	1200	1300	1400	1500	1600	1700	1800	1900	2000	2100	2200	2300	2400	2500	2600	2700	2800	2900	3000	3100	3200	3300	3400	3500	3600	3700	3800	3900	4000	4100	4200	4300	4400	4500	4600	4700	4800	4900	5000	5100	5200	5300	5400	5500	5600	5700	5800	5900	6000	6100	6200	6300	6400	
1500	1500	1500	1500	1500	1500	1500	1500	1500	1500	1500	1500	1500	1500	1500	1500	1500	1500	1500	1500	1500	1500	1500	1500	1500	1500	1500	1500	1500	1500	1500	1500	1500	1500	1500	1500	1500	1500	1500	1500	1500	1500	1500	1500	1500	1500	1500	1500	1500	1500	1500	1500	1500	1500	1500	1500

VARIABLE FILTER

III