

997.11.50 **AGIP**

OFFSHORE ITALIA  
ZONA F

NW 1 LINEA F.75.42B SE 640

1 km

COMPAGNIE GÉNÉRALES DE GÉOPHYSIQUE

DIGITAL PROCESSING P5  
TIMEORIGIN: Source and cable depth  
STACK 4800 %  
Boat motion

456 Date APRIL 12 '76 Checked

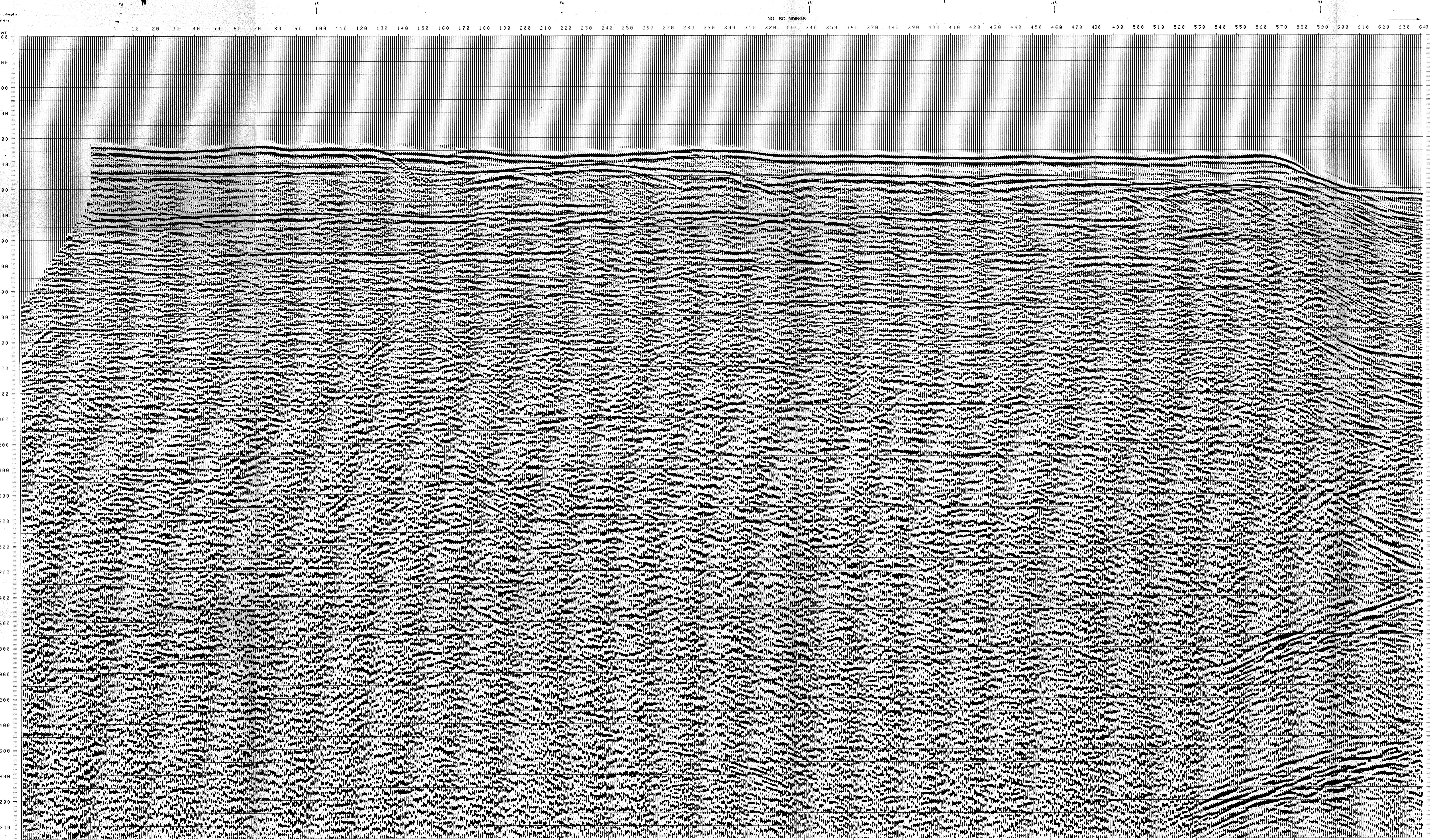
PROCESSING SAMPLING RATE 4 ms

- 1 AMPLITUDE RECOVERY
- 2 WAPCO stabilization by exporotic signal
- 3 MUTING
- 4 DECONVOLUTION 240 ms  
MINIWIN 200 2300 ms J Below  
1900 3600 ms I Sea bottom
- 5 VELOCITY ANALYSIS (VA)
- 6 NMO CORRECTIONS  
(LINEAR INTERPOLATION BETWEEN VELOCITY FUNCTIONS)
- 7 STACK 4800 %
- 8 TIME VARIANT FILTER (Origin sea bottom)
- 9 TRACE EQUALIZATION
- 10 ANALOG DISPLAY

FIELD RECORDING SAMPLING RATE 4 ms

Ship GLORITA TIDE Shooting date DEC 1975  
Field recorder SN 338 Filter VB125  
Floating point sampling 4 ms  
Streamer 2400 m (Depth 18 m)  
groups 48 (group interval 50 m)  
Geophones type HC201 n 48 / group  
48fold coverage  
Energy source VAPORCHOC (depth m)  
SP Tr Streamer 1-48  
320m MOTOROLA positioning

00199 F75.042A F75.081  
1910 241



TWT 000	*FROM SP**FROM SP**FROM SP**FROM SP**FROM SP**FROM SP*					
	1*	99*	219*	340*	460*	590*
TWT 200	*AV. VEL. *AV. VEL. *AV. VEL. *AV. VEL. *AV. VEL. *AV. VEL.*					
	IN M/S*	IN M/S*	IN M/S*	IN M/S*	IN M/S*	IN M/S*
200	1500	1500	1500	1500	1500	1500
400	1500	1500	1500	1500	1500	1500
600	1500	1500	1500	1500	1500	1500
800	1500	1500	1500	1500	1500	1500
1000	1567	1529	1516	1554	1514	1540
1200	1672	1974	1672	1701	1604	1575
1400	2423	2414	2516	2113	2104	1756
1600	3062	2645	3032	2569	2724	1849
1800	3277	3154	3326	3000	3055	1998
2000	3449	3331	3469	3206	3250	2116
2200	3590	3479	3586	3374	3409	2452
2400	3704	3602	3684	3516	3541	2863
2600	3807	3706	3766	3633	3653	3134
2800	3892	3755	3837	3735	3750	3324
3000	3966	3872	3856	3823	3833	3489
3200	4056	3946	3952	3900	3906	3634
3400	4156	3999	3999	3960	3970	3761
3600	4249	4039	4039	4049	4049	3874
3800	4331	4109	4189	4142	4142	3976
4000	4404	4269	4269	4224	4224	4067
4200	4471	4340	4340	4299	4299	4149
4400	4531	4409	4409	4368	4368	4224
4600	4586	4469	4469	4430	4430	4292
4800	4637	4524	4524	4487	4487	4356
5000	4683	4575	4575	4539	4539	4413
5200	4726	4623	4623	4586	4586	4467
5400	4766	4666	4666	4633	4633	4516
5600	4803	4707	4707	4674	4674	4562
5800	4837	4744	4744	4713	4713	4605
6000	4869	4779	4779	4749	4749	4644
6200	4899	4812	4812	4783	4783	4682