

997-11-50 **AGIP**

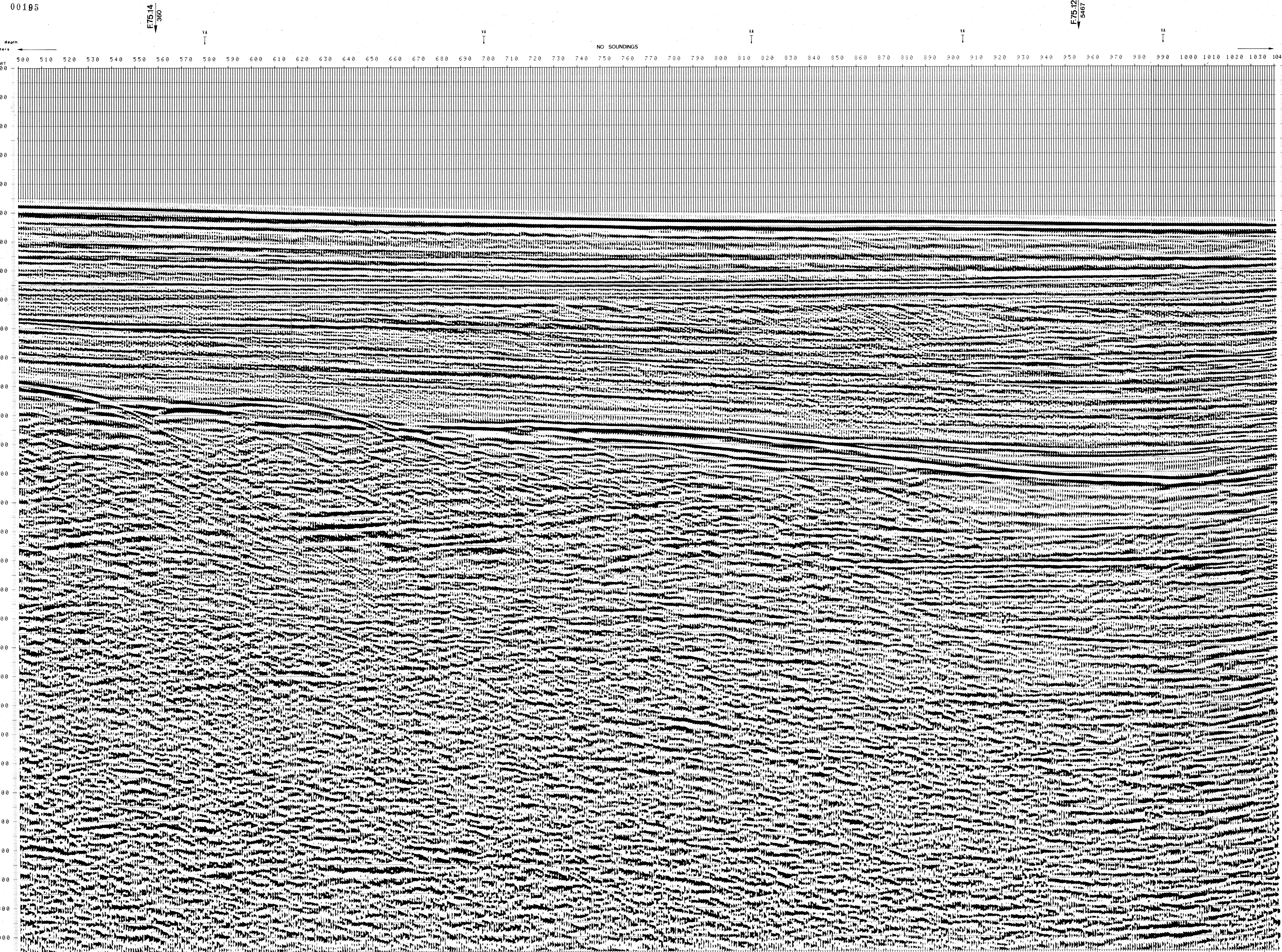
OFFSHORE ITALIA
ZONA F

SW 500 LINEA F.75.41 NE 1040

1 km

COMPAGNIE GENERALE DE GEOPHYSIQUE

DIGITAL PROCESSING P5	PROCESSING SAMPLING RATE 4MS	FIELD RECORDING SAMPLING RATE 4MS
TIME ORIGIN: Source and cable depth	1 AMPLITUDE RECOVERY	7 STACK 4800 %
STACK 4800 %	2 WAPCO (stabilization by vaporchoc signal)	8 TIME VARIANT FILTER (origin sea bottom)
Boat motion	3 MUTING	9 TRACE EQUALIZATION
	4 DECONVOLUTION 240 ms windows 800 - 2300 ms 1 Below 1900 - 3800 ms 1 sea bottom	10 ANALOG DISPLAY
	5 VELOCITY ANALYSIS (VA) (LINEAR INTERPOLATION BETWEEN VELOCITY FUNCTIONS)	Ship GLORITA TIDE Shooting date: DEC/1975
633 Date: JUNE 9 1976 Checked		Field recorder SN 338 filter V8.125
		Floating point - sampling 4 ms
		Streamer 2400 m (depth 19 m)
		groups 48 (group interval 50 m)
		Geophones type HC 201 n° 48 / group
		48Fold coverage
		Energy source VAPORCHOC (depth 6 m)
		SP 1r1 Streamer 1r48
		310m SHORAN positioning



FROM SP	FROM SP	FROM SP	FROM SP	FROM SP
459*	579*	699*	819*	939*
TO SP	TO SP	TO SP	TO SP	TO SP
459*	579*	699*	819*	939*
AV. VEL.	AV. VEL.	AV. VEL.	AV. VEL.	AV. VEL.
IN M/S	IN M/S	IN M/S	IN M/S	IN M/S
1500	1500	1500	1500	1500
1700	1500	1500	1500	1500
1300	1500	1500	1500	1500
1326	1500	1500	1500	1500
1339	1516	1546	1505	
1613	1566	1593	1531	
1699	1642	1641	1572	
1784	1731	1703	1722	
1872	1791	1768	1772	
1982	1840	1864	1926	
2198	2030	1936	2027	
2531	2304	2090	2109	
2681	2633	2207	2280	
3149	3156	2365	2691	
3765	3373	2613	3089	
3555	3563	3173	3236	
3724	3731	3364	3418	
3876	3862	3534	3545	
4012	4016	3667	3736	
4135	4141	3828	3672	
4247	4253	3952	3996	
4349	4355	4067	4103	
4443	4448	4173	4213	
4529	4534	4270	4309	
4609	4614	4359	4397	
4683	4687	4442	4478	
4751	4756	4519	4554	
4819	4819	4591	4625	
4874	4879	4658	4690	

VARIABLE FILTER

997-11-50 VII

Frequency in Hz

0 5 10 20 30 40 50 60