

997-11-69

AGIP

OFFSHORE ITALIA

ZONA F

DIGITAL PROCESSING P5

TIME ORIGIN: Source and cable depth

STACK 4800%

Boat motion

692

Date: JUNE 21, 76

Checked

PROCESSING SAMPLING RATE 4ms		FIELD RECORDING SAMPLING RATE 4ms
1 AMPLITUDE RECOVERY	7 STACK 4800%	Ship POLAR BJORN Shooting date: FEB/1976
2 WAPCO stabilization by reference signal	8 TIME VARIANT FILTER (origin sea bottom)	Field recorder: SN338B filter: 118-125
3 MUTING	9 TRACE EQUALIZATION	floating point sampling: 4 ms
4 DECONVOLUTION 240 Hz WINDOW: 500 2300 ms J Below 1900 3600 ms Tsa bottom	10 ANALOG DISPLAY	Streamer 2400 m (depth 10 m)
5 VELOCITY ANALYSIS (VA)		groups: 48 (group interval: 50 m)
6 RMS CORRECTIONS LINEAR INTERPOLATION BETWEEN VELOCITY FUNCTIONS		Geophones type: HC 201 n° 48 / group
		48Fold coverage
		Energy source: VAPORCHOC (depth 5 m)
		SP 1+1 Streamer 1+48
		V 322m SHORAN positioning

NW 2910 LINEA F-76-40B 2369 SE

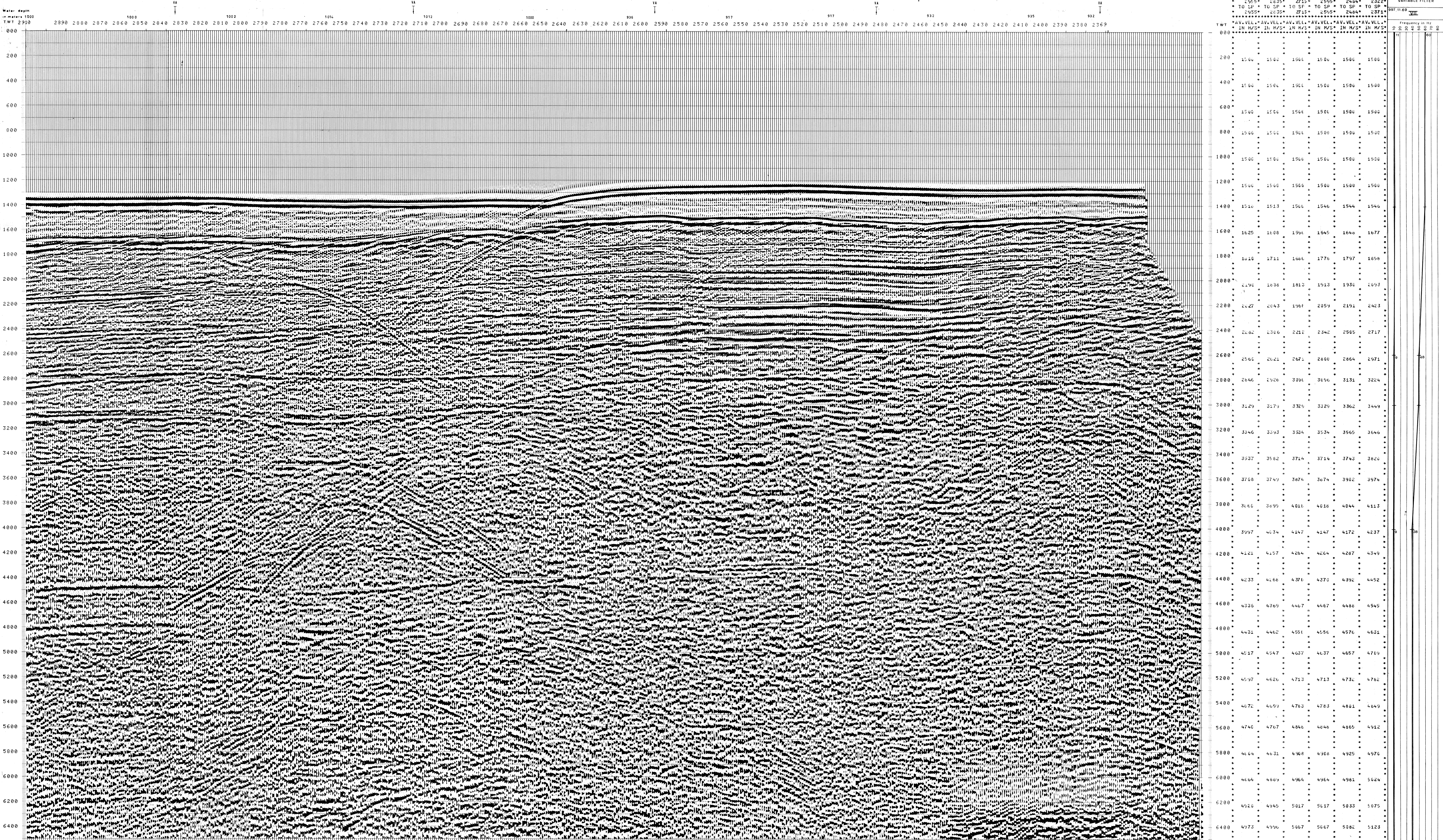
1 km

COMPAGNIE GENERALE DE GEOPHYSIQUE

00191

F7653  
789

F7651  
801



TWT	*AV. VEL. *AV. VEL. *AV. VEL. *AV. VEL. *AV. VEL. *AV. VEL.*						Frequency in Hz
	IN M/S*	IN M/S*	IN M/S*	IN M/S*	IN M/S*	IN M/S*	
000							
200	1500	1500	1500	1500	1500	1500	
400	1500	1500	1500	1500	1500	1500	
600	1500	1500	1500	1500	1500	1500	
800	1500	1500	1500	1500	1500	1500	
1000	1500	1500	1500	1500	1500	1500	
1200	1500	1500	1500	1500	1500	1500	
1400	1510	1513	1500	1546	1544	1546	
1600	1625	1608	1591	1645	1646	1677	
1800	1610	1711	1666	1776	1797	1858	
2000	1690	1838	1810	1913	1930	2093	
2200	1627	2043	1967	2059	2191	2423	
2400	1682	2306	2212	2342	2565	2717	
2600	1565	2621	2671	2800	2864	2971	
2800	1646	2926	3091	3056	3131	3224	
3000	3129	3179	3326	3329	3362	3449	
3200	3346	3393	3534	3534	3565	3646	
3400	3537	3582	3714	3714	3743	3820	
3600	3708	3747	3874	3874	3902	3974	
3800	3866	3899	4016	4016	4044	4113	
4000	3997	4034	4147	4147	4172	4237	
4200	4121	4157	4264	4264	4287	4349	
4400	4233	4268	4371	4371	4392	4452	
4600	4336	4369	4467	4467	4488	4545	
4800	4431	4462	4551	4551	4576	4631	
5000	4517	4547	4637	4637	4657	4709	
5200	4597	4626	4713	4713	4730	4782	
5400	4672	4699	4783	4783	4801	4849	
5600	4740	4767	4846	4846	4865	4912	
5800	4804	4831	4908	4908	4925	4970	
6000	4864	4889	4964	4964	4981	5024	
6200	4920	4945	5017	5017	5033	5075	
6400	4973	4996	5067	5067	5082	5123	