

997-11-50 **AGIP**

OFFSHORE ITALIA  
ZONA F

NW 977 LINEA F.75.40B 1674 SE

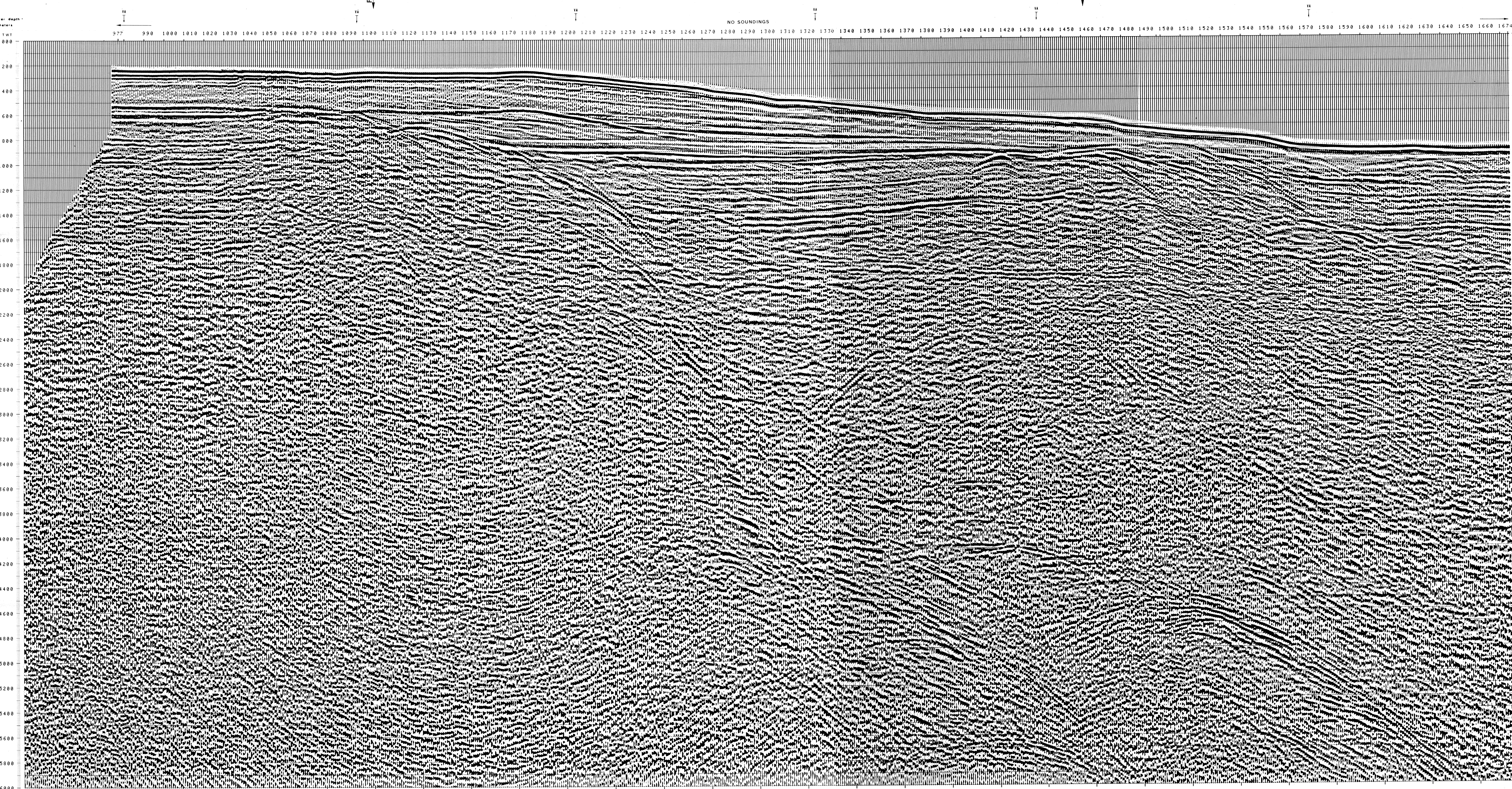
1 km

COMPAGNIE GÉNÉRALES DE GÉOPHYSIQUE

DIGITAL PROCESSING P5	PROCESSING SAMPLING RATE 4ms	FIELD RECORDING SAMPLING RATE 4ms
1 AMPLITUDE RECOVERY	7 STACK 4800 %	Ship GLORITA TIDE Shooting date DEC/1976
2 WARP/STABILIZATION by VAPORCHOC signal	8 TIME VARIANT FILTER (Origin sea bottom)	Field recorder SN 338 filter V8.125
3 MUTING	9 TRACE EQUALIZATION	Floating point, sampling 4 ms
4 DECONVOLUTION 240 ms MUSKAT 500 - 2300 ms J Balaz 1900 - 3600 ms Tese bottom	10 ANALOG DISPLAY	Streamer 2400 m (depth 19 m)
5 VELOCITY ANALYSIS (VM)		groups 48 (group interval 50 m)
6 RMS CORRECTORS (LINEAR INTERPOLATION BETWEEN VELOCITY FUNCTIONS)		Geophones type HC 201 n° 48 / group
		48 fold coverage
		Energy source VAPORCHOC (depth 19 m)
		SP Trs Streamer Tr 48
		310m MOTOROLA positioning

484 Date: APRIL 21, 76 Checked: WJ

00189



TWT	*FROM SP*FROM SP*FROM SP*FROM SP*FROM SP*FROM SP*						*TO SP* TO SP* TO SP* TO SP* TO SP* TO SP*						*IN WVS* IN WVS* IN WVS* IN WVS* IN WVS* IN WVS*						*AV. VEL.*AV. VEL.*AV. VEL.*AV. VEL.*AV. VEL.*AV. VEL.*					
	930*	1185*	1326*	1437*	1574*	1674*	1128*	1265*	1376*	1437*	1574*	1674*	1128*	1265*	1376*	1437*	1574*	1674*	1128*	1265*	1376*	1437*	1574*	1674*
000																								
200	1500	1500	1500	1500	1500	1500																		
400	1525	1541	1500	1500	1500	1500																		
600	1694	1579	1592	1500	1500	1500																		
800	2195	1740	1682	1566	1500	1500																		
1000	2646	1975	1878	1740	1612	1570																		
1200	3066	2372	2163	2220	1814	1711																		
1400	3514	2633	2490	2636	2187	1915																		
1600	3849	2959	2827	2891	2489	2107																		
1800	4111	3311	3130	3094	2969	2436																		
2000	4319	3599	3457	3424	3322	2467																		
2200	4498	3836	3724	3695	3682	3219																		
2400	4633	4133	3947	3920	3835	3501																		
2600	4753	4189	4136	4111	4032	3739																		
2800	4857	4342	4298	4274	4201	3944																		
3000	4946	4465	4438	4416	4348	4121																		
3200	5024	4574	4560	4540	4476	4270																		
3400	5094	4670	4669	4649	4589	4462																		
3600	5155	4755	4765	4747	4689	4534																		
3800	5210	4831	4851	4834	4780	4643																		
4000	5259	4899	4928	4912	4861	4740																		
4200	5304	4961	4938	4983	4934	4820																		
4400	5345	5018	5063	5047	5001	4909																		
4600	5382	5069	5120	5106	5061	4981																		
4800	5416	5116	5173	5160	5117	5050																		
5000	5447	5159	5222	5209	5169	5112																		
5200	5475	5199	5268	5256	5216	5169																		
5400	5503	5237	5310	5298	5260	5222																		
5600	5528	5271	5346	5337	5300	5272																		
5800	5551	5303	5385	5374	5338	5317																		
6000	5573	5333	5419	5408	5374	5360																		

VARIABLE FILTER

III

Frequency in Hz

0 5 10 20 30 40 50