

997-11-50 **AGIP**

OFFSHORE ITALIA
ZONA F

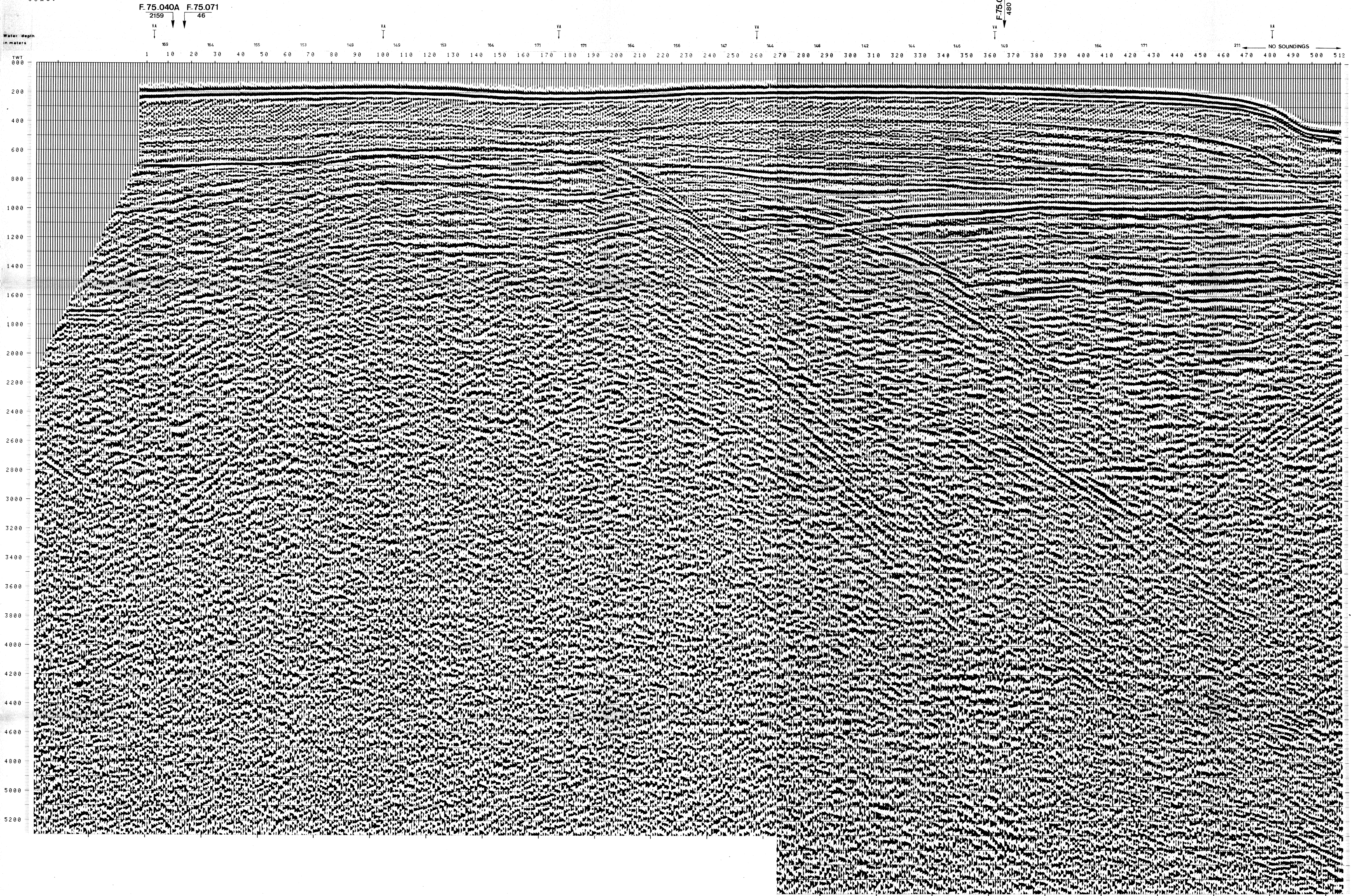
NW 1 LINEA F.75.40B SE 512

1 km

COMPAGNIE GÉNÉRALES DE GÉOPHYSIQUE

DIGITAL PROCESSING P5		PROCESSING SAMPLING RATE 4ms	FIELD RECORDING SAMPLING RATE 4ms
TIME ORIGIN: Source and cable depth	1 AMPLITUDE RECOVERY	7 STACK 4800 %	Ship GLORITA TIDE Shooting date DEC / 1975
STACK 4800 %	2 WAPCO (stabilization by vaporchoc signal)	8 TIME VARIANT FILTER (Origin sea bottom)	Field recorder SN 338 filter V8 125
Boat motion	3 MUTING	9 TRACE EQUALIZATION	Floating point sampling 4 ms
	4 DECONVOLUTION 240 ms WINDOWS 500 - 2300 ms J Below 1900 - 3600 ms J sea bottom	10 ANALOG DISPLAY	Streamer 2400 m (depth 10 m)
	5 VELOCITY ANALYSIS (VA)		groups 48 (group interval 50 m)
	6 NMO CORRECTIONS (LINEAR INTERPOLATION BETWEEN VELOCITY FUNCTIONS)		Geophones type HC 201 n° 48 / group
482 Date: APRIL 21 '76 Checked M/V			48 Fold coverage
			Energy source VAPORCHOC (depth 6 m)
			SP Tr Streamer 1:48
			320m MOTOROLA positioning

00187



TWT 000	VARIABLE FILTER					
	1*	101*	176*	261*	363*	484*
200	1511	1513	1500	1515	1512	1500
400	1613	1588	1610	1571	1593	1535
600	1957	1704	1650	1622	1619	1689
800	2097	1761	1732	1861	1805	1867
1000	2746	1907	1788	1934	1918	1973
1200	3242	2034	1865	2144	2350	2209
1400	3495	2206	2139	2404	2635	2440
1600	3684	2428	2298	2704	3042	2723
1800	3831	2769	2591	2928	3352	2974
2000	3349	3074	2967	3125	3606	3257
2200	4081	3250	3162	3295	3805	3488
2400	4224	3395	3325	3437	3971	3681
2600	4346	3519	3463	3557	4112	3844
2800	4449	3625	3581	3660	4233	3983
3000	4539	3716	3683	3750	4337	4104
3200	4618	3796	3773	3828	4428	4210
3400	4688	3867	3852	3897	4509	4304
3600	4749	3930	3922	3958	4581	4387
3800	4805	3986	3985	4023	4645	4461
4000	4854	4067	4067	4112	4703	4528
4200	4899	4149	4149	4192	4755	4589
4400	4940	4224	4224	4265	4802	4644
4600	4978	4293	4293	4332	4846	4691
4800	5012	4356	4356	4393	4885	4740
5000	5043	4413	4413	4449	4922	4782
5200	5073	4467	4467	4501	4956	4822
5400	5099	4516	4516	4549	4987	4858
5600	5124	4562	4562	4594	5016	4891