

997-11-50

AGIP

OFFSHORE ITALIA
ZONA F

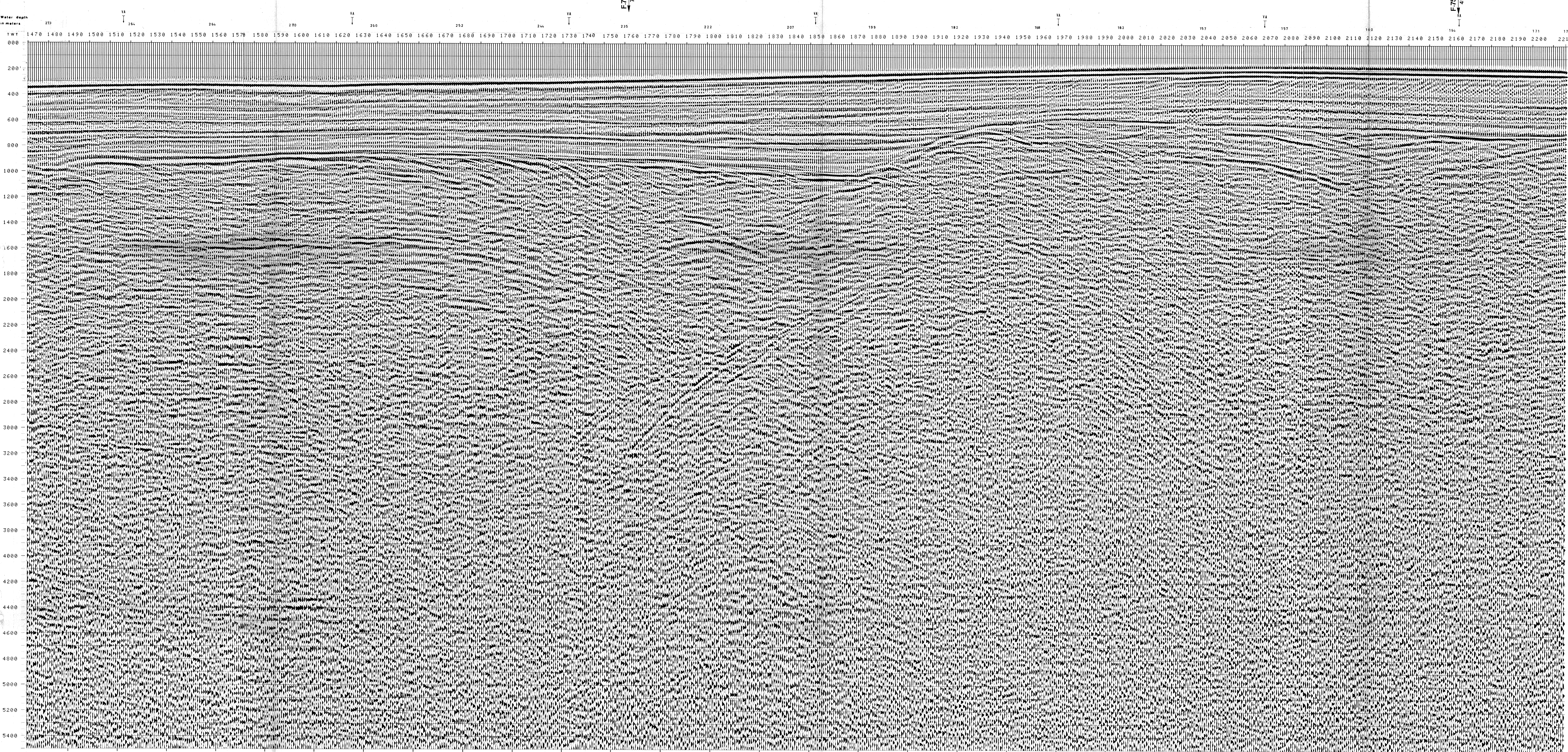
NW 1470 SE 2216
LINEA F.75-40A

1 km

COMPAGNIE GÉNÉRALES DE GÉOPHYSIQUE

DIGITAL PROCESSING P5		PROCESSING (SAMPLING RATE 4 MS)		FIELD RECORDING (SAMPLING RATE 4 MS)	
1. TIME ORIGIN (Source and cable depth)	2. AMPLITUDE RECOVERY	7. STACK 4800 %	1. Ship GLORITA TIDE Shooting date DEC/1975	Field recorder SN 338 filter 1/8 125	
3. MUTING	3. WAFD (stabilization by vaporchoc signal)	8. TIME VARIANT FILTER (origin sea bottom)	Floating point sampling 4 ms	Streamer 2400 m (depth 18 m)	
4. RECORD LENGTH 240 ms	4. VELOCITY ANALYSIS (VA)	9. TRACE EQUALIZATION	Geophones type HC 201 n° 48 / group	48 fold coverage	
5. VELOCITY ANALYSIS (VA)	5. RMO CORRECTIONS (LINEAR INTERPOLATION BETWEEN VELOCITY FUNCTIONS)	10. ANALOG DISPLAY	Energy source VAPORCHOC (depth 18 m)		
6. RMO CORRECTIONS			SP 148 Streamer		
427 Date: APRIL 1 1976 Checked: R.C.			330m MOTOROLA positioning		

00186



*FROM SP*FROM SP*FROM SP*FROM SP*FROM SP*FROM SP*FROM SP*FROM SP*FROM SP*FROM SP*									
1386	1515	1627	1732	1824	1974	2069	2163	2258	2352
TO SP	TO SP	TO SP	TO SP	TO SP	TO SP	TO SP	TO SP	TO SP	TO SP
1386	1515	1627	1732	1824	1974	2069	2163	2258	2352
AV. VEL.	AV. VEL.	AV. VEL.	AV. VEL.	AV. VEL.	AV. VEL.	AV. VEL.	AV. VEL.	AV. VEL.	AV. VEL.
IN M/S	IN M/S	IN M/S	IN M/S	IN M/S	IN M/S	IN M/S	IN M/S	IN M/S	IN M/S
1500	1500	1500	1500	1500	1544	1500	1520		
1539	1508	1645	1661	1602	1642	1604	1767		
1497	1652	1791	1762	1679	1720	1942	1888		
1526	1766	1848	1692	1728	1816	2392	2231		
1767	1991	2118	2051	1902	1933	2758	2820		
1791	2299	2632	2567	2142	2223	3166	3208		
2342	2627	2999	2960	2390	2501	3428	3464		
2651	3093	3250	3218	2822	2912	3625	3656		
3111	3305	3444	3416	3111	3166	3777	3805		
3299	3474	3599	3574	3299	3349	3899	3924		
3454	3613	3727	3704	3454	3503	4000	4040		
3583	3729	3833	3812	3583	3625	4149	4187		
3692	3826	3923	3903	3692	3730	4276	4311		
3785	3910	4000	3982	3785	3821	4385	4417		
3866	3983	4119	4089	3866	3899	4479	4509		
3937	4084	4224	4196	3937	3968	4562	4590		
4000	4185	4317	4291	4000	4052	4635	4661		
4093	4274	4399	4374	4093	4149	4699	4724		
4189	4355	4473	4449	4189	4236	4757	4781		
4259	4427	4539	4517	4259	4314	4809	4832		
4342	4492	4599	4578	4342	4385	4857	4878		
4409	4552	4654	4634	4409	4449	4899	4920		
4469	4606	4704	4684	4469	4508	4939	4958		
4524	4656	4749	4731	4524	4562	4974	4993		
4575	4701	4791	4773	4575	4611	5007	5025		
4623	4744	4830	4813	4623	4657	5038	5055		
4666	4783	4866	4849	4666	4699	5066	5081		

VARIABLE FILTER

Frequency in Hz

0 20 40 60 80 100