

997-11-50 **AGIP**

OFFSHORE ITALIA
ZONA F

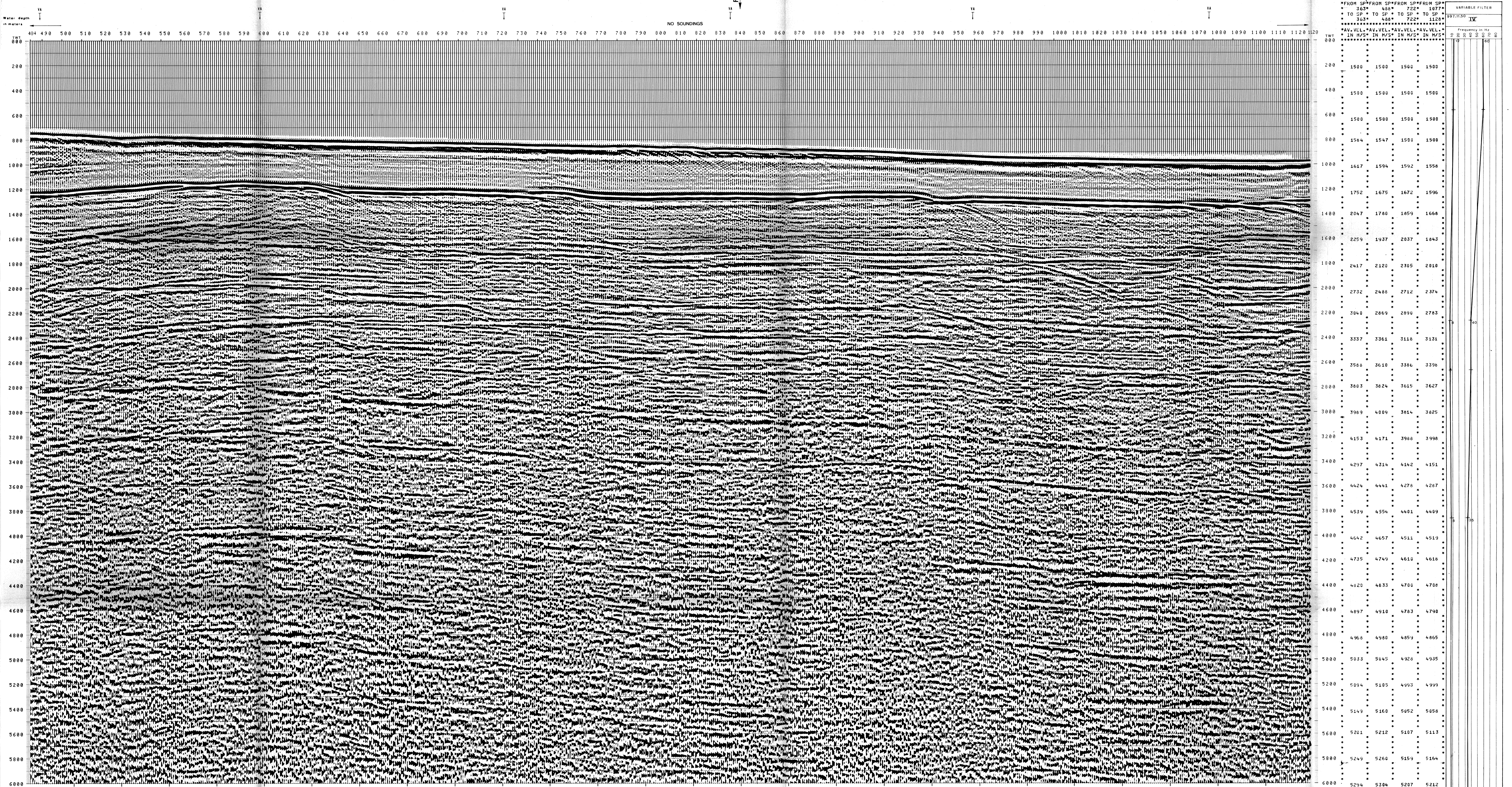
NW 484 LINEA F-75-34 SE 1128

1 km

COMPAGNIE GÉNÉRALES DE GÉOPHYSIQUE

DIGITAL PROCESSING P5	1 AMPLITUDE RECOVERY	7 STACK 4800 %	FIELD RECORDING SAMPLING RATE 4ms
	2 WAPCO stabilization by vaporchoc signal	8 TIME VARIANT FILTER (Origin sea bottom)	
TIME ORIGIN: Source and cable depth	3 MUTING	9 TRACE EQUALIZATION	Ship GLORITA TIDE Shooting date: DEC 1975 Field recorder SN 338 Filter VB 125 Floating point: sampling 4 ms Streamer 2400 m (depth 10 m) groups 48 (group interval 50 m) Geophones type HC 201 n° 48/group 48Fold coverage Energy source VAPORCHOC (depth 6 m) SP Tr 1 Streamer Tr 48 310m SHORAN positioning
STACK 4800%	4 DECONVOLUTION 240 ms windows 500 - 2300 ms J. Blizw 1900 - 3600 ms sea bottom	10 ANALOG DISPLAY	
Boat motion	5 VELOCITY ANALYSIS (VA) 6 NMO CORRECTIONS (LINEAR INTERPOLATION BETWEEN VELOCITY FUNCTIONS)		
475	Date: APRIL 21 1976 Checked: <i>NY</i>		

00169



TWT 000	*FROM SP*FROM SP*FROM SP*				VARIABLE FILTER			
	363*	488*	722*	1077*	363*	488*	722*	1077*
	TO SP*	TO SP*	TO SP*	TO SP*	TO SP*	TO SP*	TO SP*	TO SP*
	363*	488*	722*	1077*	363*	488*	722*	1077*
	AV. VEL. *AV. VEL.* *AV. VEL.* *AV. VEL.*				Frequency in Hz			
	IN M/S*	IN M/S*	IN M/S*	IN M/S*	0	20	40	60
000								
200	1500	1500	1500	1500				
400	1500	1500	1500	1500				
600	1500	1500	1500	1500				
800	1584	1547	1500	1500				
1000	1617	1594	1592	1558				
1200	1752	1675	1672	1596				
1400	2047	1780	1659	1668				
1600	2259	1937	2037	1843				
1800	2417	2120	2305	2010				
2000	2732	2488	2712	2374				
2200	3040	2869	2890	2783				
2400	3337	3361	3118	3131				
2600	3586	3610	3386	3398				
2800	3803	3824	3615	3627				
3000	3989	4009	3814	3825				
3200	4153	4171	3988	3998				
3400	4297	4314	4142	4151				
3600	4424	4441	4278	4287				
3800	4539	4554	4401	4409				
4000	4642	4657	4511	4519				
4200	4735	4749	4610	4618				
4400	4820	4833	4700	4708				
4600	4897	4910	4783	4790				
4800	4960	4960	4859	4865				
5000	5033	5045	4928	4935				
5200	5094	5105	4993	4999				
5400	5149	5160	5052	5058				
5600	5201	5212	5107	5113				
5800	5249	5260	5159	5164				
6000	5294	5304	5207	5212				