

997-11-50

**AGIP**

OFFSHORE ITALIA  
ZONA F

NW 409 LINEA F-75-32 SE 1

1 km

COMPAGNIE GENERALE DE GEOPHYSIQUE

DIGITAL PROCESSING P5

TIME ORIGIN: Source and cable depth

STACK 4800%

Boat motion

470 Date: APRIL 12, 76 Checked

PROCESSING  
SAMPLING RATE 4ms

1 AMPLITUDE RECOVERY  
2 WAPCO stabilization by vaporchoc signal  
3 MUTING  
4 DECONVOLUTION 240 ms  
Windows 500 - 2300 ms J Below  
1900 - 3600 ms sea bottom  
5 VELOCITY ANALYSIS (VA)  
6 NMO CORRECTIONS  
LINEAR INTERPOLATION  
BETWEEN VELOCITY FUNCTIONS

7 STACK 4800 %  
8 TIME VARIANT FILTER (origin sea bottom)  
9 TRACE EQUALIZATION  
10 ANALOG DISPLAY

FIELD RECORDING  
SAMPLING RATE 4ms

Ship GLORITA TIDE Shooting date DEC 1975

Field recorder SN 338 filter VB 125

Floating point sampling 4 ms

Streamer 2400 m (depth 19 m)

groups 48 (group interval 50 m)

Geophones type HC 201 n° 48 / group

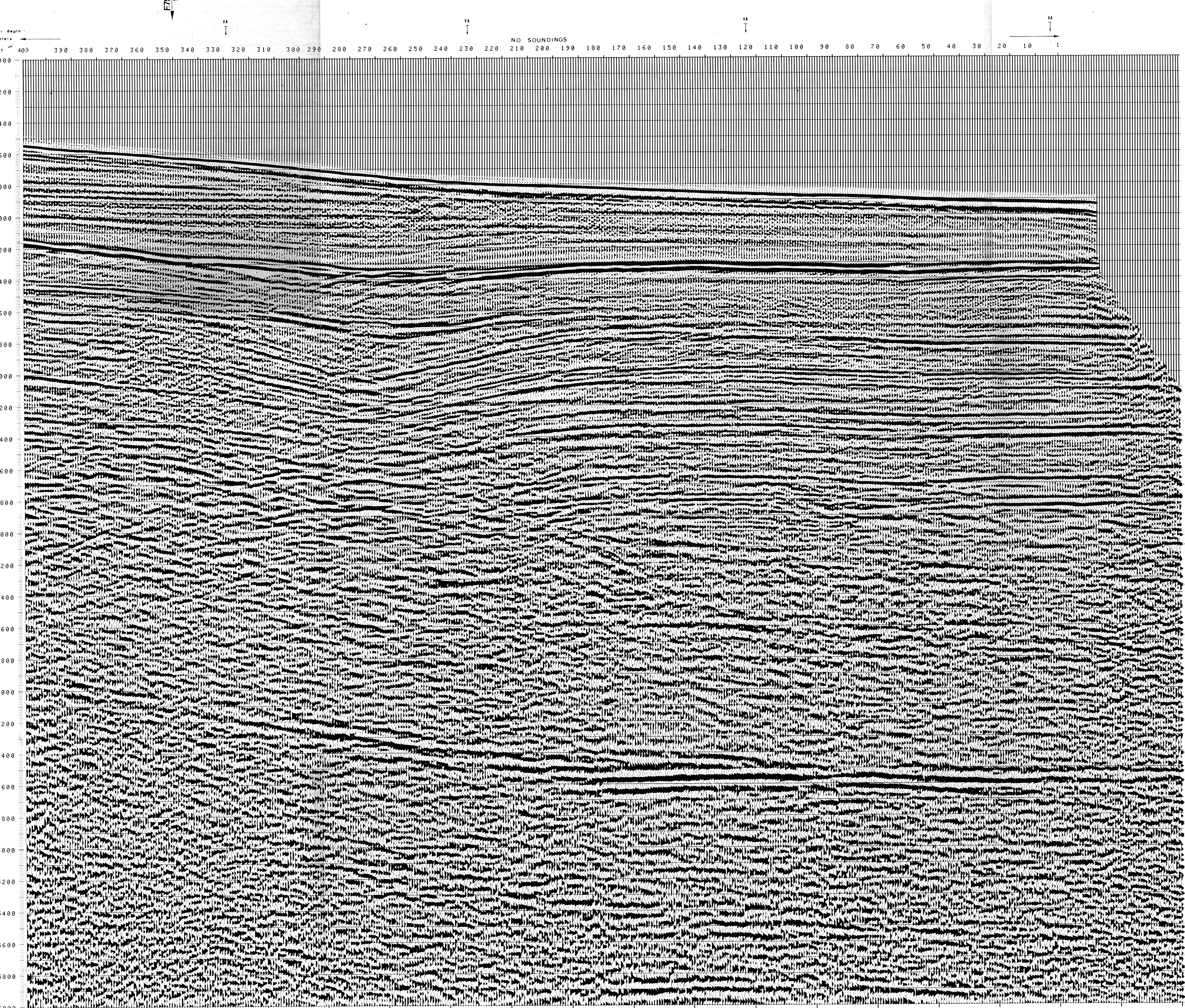
48Fold coverage

Energy source VAPORCHOC (depth 6 m)

SP 191 Streamer 1948

310m SHORAN positioning

00163



| TWT  | FROM SP | FROM SP | FROM SP | FROM SP | FROM SP |
|------|---------|---------|---------|---------|---------|
| 000  | 453     | 328     | 233     | 123     | 1       |
| 200  | 1500    | 1500    | 1500    | 1500    | 1500    |
| 400  | 1500    | 1500    | 1500    | 1500    | 1500    |
| 600  | 1566    | 1500    | 1500    | 1500    | 1500    |
| 800  | 1619    | 1527    | 1500    | 1500    | 1500    |
| 1000 | 1732    | 1637    | 1575    | 1563    | 1533    |
| 1200 | 1876    | 1735    | 1669    | 1637    | 1608    |
| 1400 | 2038    | 1844    | 1754    | 1773    | 1648    |
| 1600 | 2289    | 1959    | 1920    | 1996    | 1778    |
| 1800 | 2510    | 2316    | 2183    | 2165    | 2033    |
| 2000 | 2717    | 2580    | 2471    | 2296    | 2297    |
| 2200 | 2935    | 2944    | 2687    | 2529    | 2538    |
| 2400 | 3147    | 3132    | 2942    | 2798    | 2864    |
| 2600 | 3413    | 3385    | 3207    | 3034    | 2935    |
| 2800 | 3640    | 3615    | 3449    | 3289    | 3205    |
| 3000 | 3837    | 3614    | 3659    | 3509    | 3449    |
| 3200 | 4010    | 3988    | 3843    | 3703    | 3646    |
| 3400 | 4162    | 4142    | 4005    | 3873    | 3820    |
| 3600 | 4298    | 4276    | 4149    | 4024    | 3974    |
| 3800 | 4419    | 4400    | 4278    | 4160    | 4112    |
| 4000 | 4528    | 4510    | 4394    | 4282    | 4237    |
| 4200 | 4627    | 4610    | 4499    | 4392    | 4349    |
| 4400 | 4716    | 4700    | 4595    | 4493    | 4452    |
| 4600 | 4798    | 4783    | 4682    | 4584    | 4545    |
| 4800 | 4873    | 4859    | 4762    | 4668    | 4631    |
| 5000 | 4942    | 4928    | 4835    | 4745    | 4709    |
| 5200 | 5005    | 4992    | 4903    | 4817    | 4782    |
| 5400 | 5065    | 5052    | 4966    | 4883    | 4849    |
| 5600 | 5120    | 5107    | 5024    | 4944    | 4912    |
| 5800 | 5171    | 5159    | 5079    | 5001    | 4970    |
| 6000 | 5218    | 5207    | 5129    | 5054    | 5024    |

VARIABLE FILTER

997-11-50

IV

Frequency in Hz