

997-11-50

AGIP

OFFSHORE ITALIA  
ZONA F

W 550 LINEA F-75-119 E 1

1 km

COMPAGNIE GÉNÉRALES DE GÉOPHYSIQUE

DIGITAL PROCESSING P5

TIME ORIGIN: Source and cable depth

STACK 4800%

Boat motion

340 Date FEB 17 76 Checked

PROCESSING SAMPLING RATE 4 MS

- 1 AMPLITUDE RECOVERY
- 2 WAFEC stabilization by vaporchoc signal
- 3 MDTIME
- 4 DECONVOLUTION 240 ms  
MIGRA 500 2300 ms J Below  
1900 3600 ms sea bottom
- 5 VELOCITY ANALYSIS (VA)
- 6 NMO CORRECTIONS  
LINEAR INTERPOLATION  
BETWEEN VELOCITY FUNCTIONS
- 7 STACK 4800%
- 8 TIME VARIANT FILTER (origin sea bottom)
- 9 TRACE EQUALIZATION
- 10 ANALOG DISPLAY

FIELD RECORDING SAMPLING RATE 4 MS

Ship GLORITA TIDE Shooting date: NOV/1975

Field recorder SN 338 filter VB 125

Floating point sampling 4 ms

Streamer 2400 m (depth 18 m)

groups 48 (group interval 50 m)

Geophones type HC 201 m 48 / group

48 fold coverage

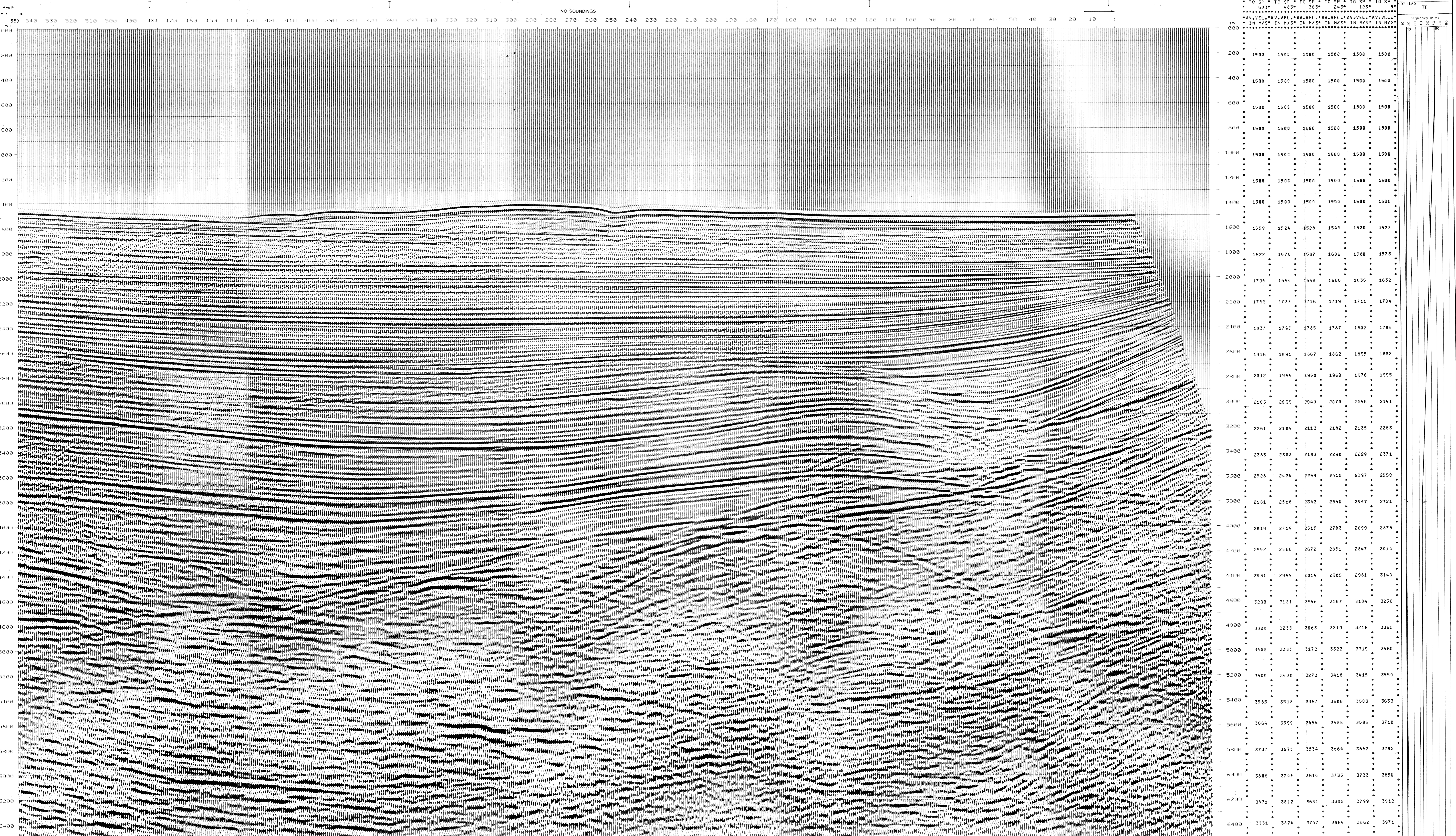
Energy source VAPORCHOC (depth 6 m)

SP 1st Streamer 1st 48

330m MOTOROLA positioning

00383  
F75 072F  
1425

F75 070B  
1312



VARIABLE FILTER									
997-11-50 II									
Frequency in Hz									
WT	00.1	0.1	1	10	100	1000	10000	100000	1000000
1500	1500	1500	1500	1500	1500	1500	1500	1500	1500
1600	1559	1524	1528	1546	1530	1527			
1700	1622	1575	1587	1606	1580	1573			
1800	1706	1654	1650	1655	1635	1632			
1900	1766	1732	1716	1719	1711	1704			
2000	1837	1751	1785	1787	1802	1788			
2100	1916	1891	1867	1862	1895	1882			
2200	2012	1951	1958	1960	1976	1995			
2300	2105	2051	2040	2070	2046	2141			
2400	2261	2181	2113	2182	2135	2263			
2500	2383	2302	2183	2298	2229	2371			
2600	2528	2434	2259	2410	2357	2550			
2700	2681	2561	2342	2540	2347	2721			
2800	2819	2711	2515	2703	2699	2875			
2900	2952	2861	2672	2851	2847	3014			
3000	3081	2951	2814	2985	2981	3140			
3100	3220	3121	2944	3107	3104	3256			
3200	3308	3233	3063	3219	3216	3365			
3300	3408	3335	3172	3322	3319	3460			
3400	3500	3431	3273	3418	3415	3550			
3500	3585	3518	3367	3506	3503	3633			
3600	3664	3551	3454	3588	3585	3710			
3700	3737	3671	3534	3664	3662	3782			
3800	3806	3746	3610	3735	3733	3850			
3900	3871	3812	3681	3802	3799	3912			
4000	3931	3874	3747	3864	3862	3971			