

997-11-50

AGIP

OFFSHORE ITALIA
ZONA F

DIGITAL PROCESSING P5

PROCESSING

FIELD RECORDING

TIME ORIGIN: Source and cable depth

STACK 4800%

Boat motion

378 Date: FEB 24 '76 Checked:

- 1. AMPLITUDE RECOVERY
- 2. WAPC (stabilization by vaporchoc signal)
- 3. MUTING
- 4. DECONVOLUTION 240 ms
windows 500 - 2300 ms J Below
1900 - 3600 ms I sea bottom
- 5. VELOCITY ANALYSIS (VA)
- 6. NMO CORRECTIONS
(LINEAR INTERPOLATION
BETWEEN VELOCITY FUNCTIONS)

- 7. STACK 4800 %
- 8. TIME VARIANT FILTER (origin sea bottom)
- 9. TRACE EQUALIZATION
- 10. ANALOG DISPLAY

Ship: GLORITA TIDE Shooting date NOV /1975
Field recorder: SN 338 Filter: VB 125
Floating point: sampling 4 ms
Streamer: 2400 m (depth 99 m)
groups 48 (group interval 50 m)
Geophones type: HC 201 n° 48 / group
48 fold coverage
Energy source: VAPORCHOC (depth 6 m)
SP 1r1 Streamer 1r48
330m MOTOROLA positioning

W
1152

LINEA F-75-111

E
604

1 km

COMPAGNIE GENERALE DE GEOPHYSIQUE

00373

F75-64
2496

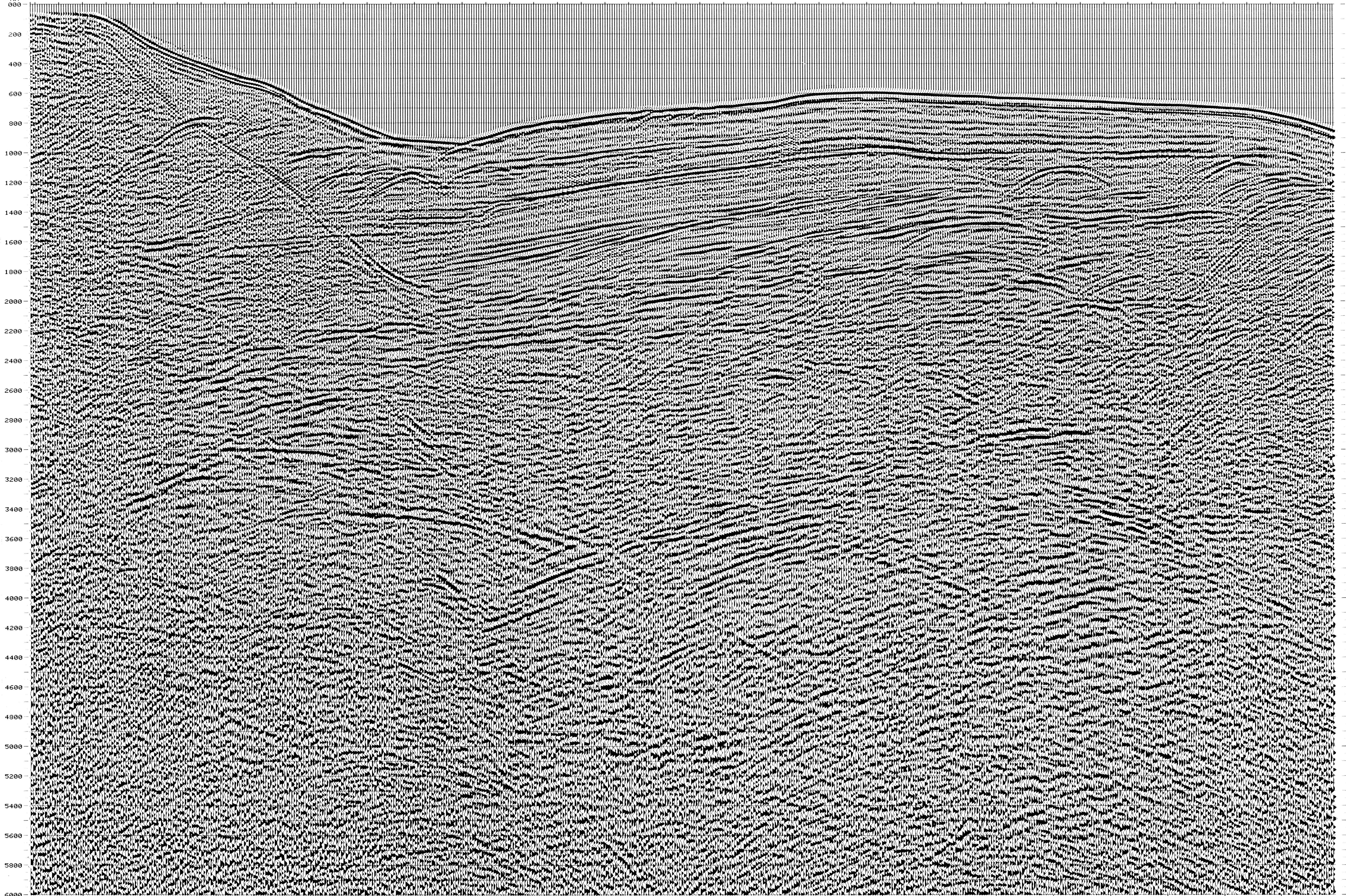
F75-62
890

Water depth: 1152 1140 1130 1120 1110 1100 1090 1080 1070 1060 1050 1040 1030 1020 1010 1000 990 980 970 960 950 940 930 920 910 900 890 880 870 860 850 840 830 820 810 800 790 780 770 760 750 740 730 720 710 700 690 680 670 660 650 640 630 620 610 604

NO SOUNDINGS

*F-111
*FROM SP*FROM SP*FROM SP*FROM SP*FROM SP*FROM SP*FROM SP
* 1101* 939* 843* 723* 606* 403*
* TO SP* TO SP* TO SP* TO SP* TO SP* TO SP* TO SP*
* 1152* 1058* 843* 723* 606* 403*
*AV.VEL.*AV.VEL.*AV.VEL.*AV.VEL.*AV.VEL.*AV.VEL.*AV.VEL.*
* IN M/S* IN M/S* IN M/S* IN M/S* IN M/S* IN M/S* IN M/S*

VARIABLE FILTER
997-11-50
II
Frequency in Hz
5 10 20 30 40 50 60



| TWT | 1500 | 1500 | 1500 | 1500 | 1500 | 1500 |
|------|------|------|------|------|------|------|
| 200 | 1652 | 1500 | 1500 | 1500 | 1500 | 1500 |
| 400 | 1779 | 1500 | 1500 | 1500 | 1500 | 1500 |
| 600 | 1692 | 1500 | 1958 | 1957 | 1500 | 1500 |
| 800 | 2052 | 1540 | 1622 | 1614 | 1550 | 1500 |
| 1000 | 2187 | 1598 | 1706 | 1659 | 1998 | 1937 |
| 1200 | 2354 | 1471 | 1791 | 1753 | 1724 | 1619 |
| 1400 | 2542 | 1749 | 1693 | 1876 | 1442 | 1797 |
| 1600 | 2735 | 1646 | 1975 | 1982 | 1936 | 1922 |
| 1800 | 2895 | 1936 | 2088 | 2166 | 2057 | 2046 |
| 2000 | 3029 | 2034 | 2224 | 2229 | 2155 | 2221 |
| 2200 | 3144 | 2173 | 2343 | 2439 | 2112 | 2416 |
| 2400 | 3243 | 2342 | 2441 | 2616 | 2463 | 2586 |
| 2600 | 3327 | 2517 | 2705 | 2768 | 2706 | 2756 |
| 2800 | 3399 | 2685 | 2899 | 2899 | 2517 | 2921 |
| 3000 | 3549 | 2832 | 3061 | 3061 | 3100 | 3101 |
| 3200 | 3682 | 3061 | 3241 | 3241 | 3258 | 3260 |
| 3400 | 3799 | 3197 | 3383 | 3383 | 3400 | 3401 |
| 3600 | 3905 | 3296 | 3516 | 3516 | 3526 | 3527 |
| 3800 | 3999 | 3421 | 3624 | 3624 | 3646 | 3641 |
| 4000 | 4085 | 3524 | 3728 | 3728 | 3742 | 3743 |
| 4200 | 4163 | 3637 | 3822 | 3822 | 3836 | 3837 |
| 4400 | 4234 | 3731 | 3908 | 3908 | 3921 | 3922 |
| 4600 | 4299 | 3817 | 3987 | 3987 | 4000 | 4000 |
| 4800 | 4359 | 3857 | 4059 | 4059 | 4072 | 4072 |
| 5000 | 4415 | 3970 | 4126 | 4126 | 4138 | 4139 |
| 5200 | 4466 | 4038 | 4188 | 4188 | 4200 | 4200 |
| 5400 | 4514 | 4101 | 4246 | 4246 | 4257 | 4257 |
| 5600 | 4558 | 4139 | 4299 | 4299 | 4310 | 4311 |
| 5800 | 4599 | 4214 | 4349 | 4349 | 4366 | 4366 |
| 6000 | | | | | | |