

997-11-50 **AGIP**

OFFSHORE ITALIA  
ZONA F

W 603 LINEA F-75-111 E 1

1 km

COMPAGNIE GÉNÉRALES DE GÉOPHYSIQUE

DIGITAL PROCESSING P5

TIME ORIGIN: Source and cable depth

STACK 4800 %

Boat motion

377 Date: FEB 24 '76 Checked: [initials]

PROCESSING SAMPLING RATE 4 ms

- AMPLITUDE RECOVERY
- MAPCO (stabilization by appropriate signal)
- MUTING
- DECONVOLUTION 240 ms  
windows: 500 - 2300 ms J below  
1900 - 3800 ms I to bottom
- VELOCITY ANALYSIS (VA)
- NMO CORRECTIONS  
(LINEAR INTERPOLATION BETWEEN VELOCITY FUNCTIONS)
- STACK 4800 %
- TIME VARIANT FILTER (origin sea bottom)
- TRACE EQUALIZATION
- ANALOG DISPLAY

FIELD RECORDING SAMPLING RATE 4 ms

Ship: GLORITA TIDE Shooting date: NOV 1975

Field recorder: SN 338 Filter: (8-125)

Floating point: sampling 4 ms

Streamer: 2400 m (depth 10 m)

groups: 48 (group interval 50 m)

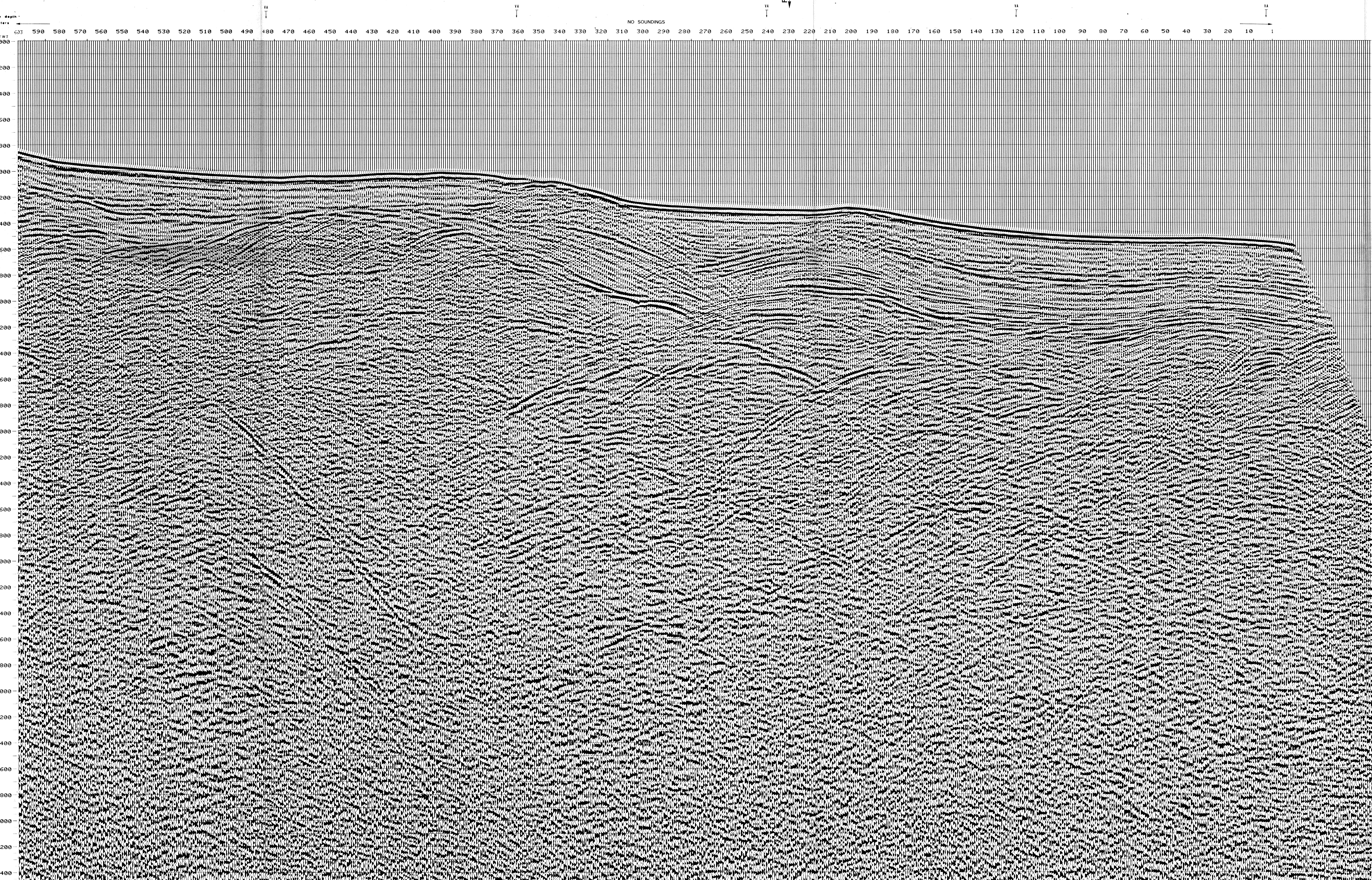
Geophones type: HC 201 n. 48 / group

48 fold coverage

Energy source: VAPORCHOC (depth 6 m)

330 m MOTOROLA positioning

00372



F75-60  
850

TWT	*FROM SP*FROM SP*FROM SP*FROM SP*FROM SP*					
	606*	603*	363*	243*	123*	1*
	TO SP*	TO SP*	TO SP*	TO SP*	TO SP*	TO SP*
	606*	603*	363*	243*	123*	1*
	IN M/S*	IN M/S*	IN M/S*	IN M/S*	IN M/S*	IN M/S*
000						
200	1500	1500	1500	1500	1500	1500
400	1500	1500	1500	1500	1500	1500
600	1500	1500	1500	1500	1500	1500
800	1500	1500	1500	1500	1500	1500
1000	1550	1500	1500	1500	1500	1500
1200	1598	1537	1574	1500	1500	1500
1400	1724	1619	1671	1541	1500	1500
1600	1942	1797	1776	1606	1519	1517
1800	1936	1926	1863	1683	1552	1566
2000	2057	2046	1945	1773	1626	1624
2200	2155	2221	2012	1980	1700	1706
2400	2312	2416	2126	1990	1696	1794
2600	2463	2586	2260	2054	1894	1956
2800	2706	2736	2471	2116	1981	2044
3000	2517	2921	2683	2301	2056	2155
3200	3100	3181	2478	2509	2121	2232
3400	3256	3260	3050	2703	2205	2299
3600	3400	3401	3202	2675	2291	2454
3800	3126	3527	3339	3025	2395	2660
4000	3646	3641	3462	3167	2565	2624
4200	3742	3743	3574	3393	2719	2966
4400	3136	3637	3675	3407	2659	3095
4600	3521	3922	3767	3511	2967	3213
4800	4000	4000	3652	3686	3164	3320
5000	4372	4072	3930	3694	3212	3419
5200	4138	4139	4002	3775	3312	3511
5400	4200	4200	4066	3650	3404	3596
5600	4257	4257	4139	3519	3489	3674
5800	4110	4311	4180	3764	3560	3746
6000	4160	4360	4241	4045	3643	3816
6200	4406	4407	4292	4101	3717	3880
6400	4450	4450	4333	4254	3776	3940