



THE AQUAPULSE SYSTEM



AREA : SARDINIA-CAGLIARI

PROSPECT : ZONE "E"



MILAN DIGITAL CENTER

LINE:ES-328

S.P 91D to S.P 1

DATUM PLANE: SEA LEVEL

INTERSECTION
LINE ES-328
S.P 217

M-MESA 5015

VELOCITY CHANGE

M-MESA 5011

VELOCITY CHANGE

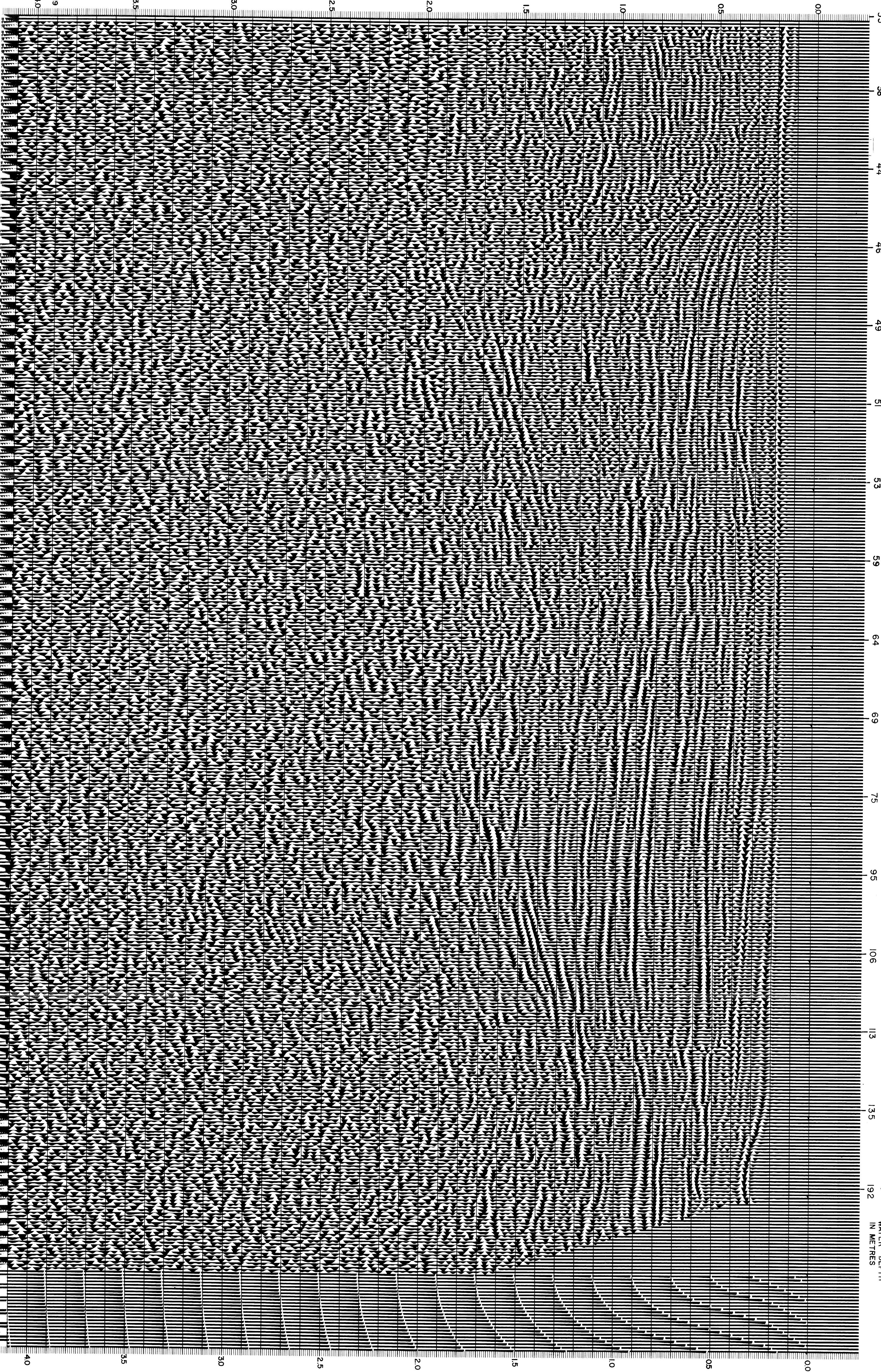
INTERSECTION
LINE ES-319
S.P 227

M-MESA 5001

NORTH WEST

RECORDING DATA		PROCESSING INFORMATION		PROCESSING SEQUENCE	
PARTY NO. 62		SAMPLE RATE 2 MS		1) EDIT - (SUM 3 POPS)	
ENERGY SOURCE AQUAPULSE		TIME ZONE		2) DECONVOLVED BEFORE STACK	
FILTER 10-80 HZ		L.C. H.C.		3) NORMAL MOVE CUT	
CABLE 1600 m		HZ DB OCT HZ DB OCT		4) STACK (200%)	
GEOPHONES 32 CRYSTAL ELEMENT		00. - 0.27 20 18 50 12 -		5) TV-FILTER	
TAPERED ARRAY		0.27 - 0.42 15 18 45 12		6) PLAYBACK (UNFILTERED)	
LEAD IN. 650FTL		0.42 - 1.15 10 12 40 12			
AMPLIFIER RECORD BINARY GAIN		1.15 - 1.85 5 6 30 6			
CHARGE SIZE 4 GUNS POP					
DATE SHOT APRIL 68				REFL. NO 71033	
				DATE JUNE 68	

91D 85 79 73 67 61 55 49 43 37 31 25 19 13 7 1 WATER DEPTH IN METRES



CS 2419

40

40