



THE AQUAPULSE SYSTEM

QUIP

AREA : SARDINIA - CAGLIARI

PROSPECT : ZONE "E"

WESTERN
GEOPHYSICAL
MILAN DIGITAL CENTER

LINE: ES-324

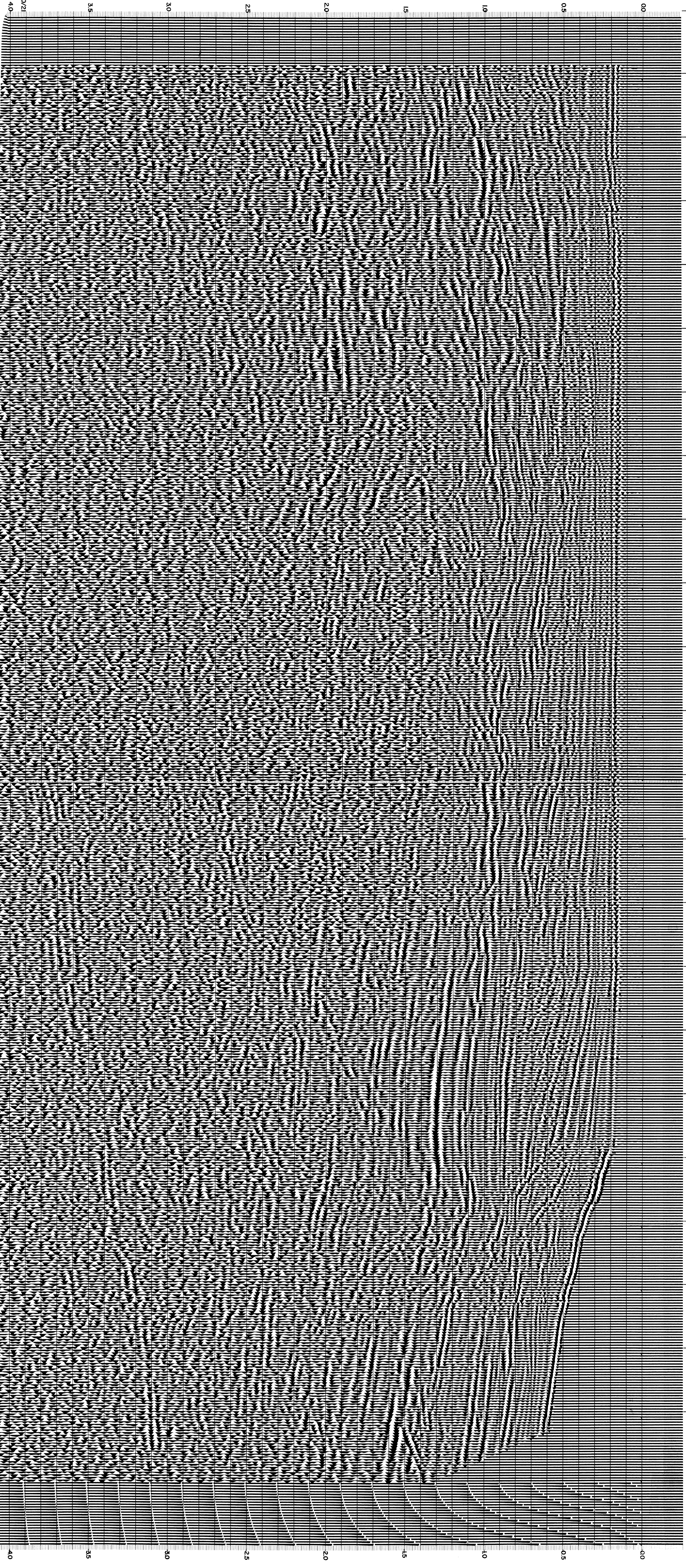
S.P.133D to S.P.1

DATUM PLANE: SEA LEVEL

RECORDING DATA		PROCESSING INFORMATION		PROCESSING SEQUENCE	
TAPE NO. 88	RECORDING DATE 26 APRIL 1968	DECONVOLUTION	TIME VARIANT FILTER	1) EDIT - SUM 3 POS	REF. NO. 73822
ENERGY SOURCE AQUAPULSE	LEAD IN 550 FT.	DECONVOLVED BEFORE STACK	LC	2) DECONVOLVED BEFORE STACK	DATE JUNE 1968
FILTER 10-90 HZ	AMPLIFIER RECORD BINARY GAIN	TIME VARIANT	HC	3) NORMAL MOVE OUT	
CABLE 1800 m	WAVELENGTH	0 - 600 ms		4) STACK 120/76	
GEOPHONES 32 CRYSTAL ELEMENT	TIME ZONE	0 - 4 sec		5) TRIMLINE	
	DATE SHOT APRIL 1968	1.05 - 1.25		6) FLATTEN (G) FILTERED	
		1.25 - 4.00			

133D 127 20 121 20 115 22 109 22 103 26 97 26 91 29 85 37 79 40 73 44 67 46 61 49 55 55 49 57 43 55 37 73 31 91 25 124 19 210 13 236 7 289 1 325 WATER DEPTH IN METRES

M - MESA 5011 INTERSECTION LINE ES-324 76
 M - MESA 5002 VELOCITY CHANGE 49 57
 M - MESA 5009 VELOCITY CHANGE 43 55
 M - MESA 5005 INTERSECTION LINE ES-319 83
 M - MESA 5012 VELOCITY CHANGE 7 289



0.0 0.5 1.0 1.5 2.0 2.5 3.0 3.5 4.0
 0 50 100 150 200 250 300 350 400