



THE AQUAPULSE SYSTEM

LINE : ES-322

S.P. 220 to S.P.112

DATUM PLANE : SEA LEVEL

SOUTHEAST

M - MESA 5013

VELOCITY CHANGE

M - MESA 5014

VELOCITY CHANGE

M - MESA 5011

VELOCITY CHANGE

M - MESA 5007

VELOCITY CHANGE

M - MESA 5006

VELOCITY CHANGE

M - MESA 5012

VELOCITY CHANGE

M - MESA 5012

WATER DEPTH
IN METRES

220

214

208

202

196

190

184

178

172

166

160

154

148

142

136

130

124

118

112

AGIP

AREA : SARDINIA - CAGLIARI

PROSPECT : ZONE "E"

WESTERN
GEOPHYSICAL
DIVISION OF PETROBRAS
MILAN DIGITAL CENTER

RECORDING DATA

PARTY NO. 82
ENERGY SOURCE AQUAPULSE
FILTER 10-80 HZ
CABLE 1600 m
GEOPHONES 32 CRYSTAL ELEMENT
TAPERED ARRAY
LEAD IN 63.0 FT
AMPLIFIER RECORD BINARY GAIN
CHARGE SIZE 4 GUNS POP
DATE SHOT APRIL 1988

PROCESSING INFORMATION

SAMPLE RATE 2 ms

DECONVOLUTION

AUTO CORR. INT. TIME VARIANT
MAX. APERTURE 0 - 320 ms
TIME ZONE 0 - 4 385
ITERATIONS 4

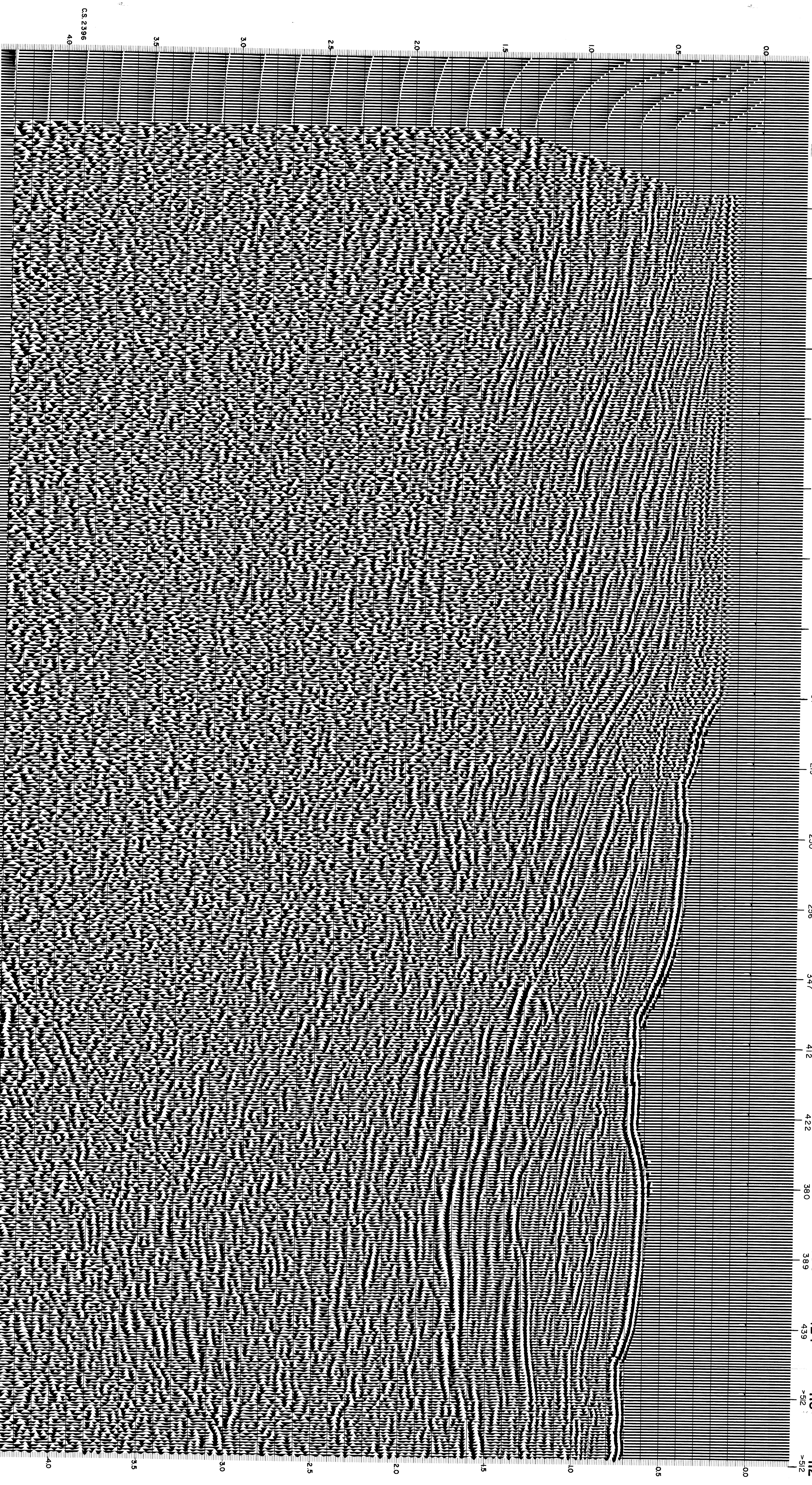
TIME VARIANT FILTER

TIME ZONE Hz dB OCT Hz dB OCT
0.00 - 0.875 20 18 45 12
0.875 - 1.03 19 12 45 12
1.03 - 1.43 10 12 40 12
1.43 - 2.65 10 12 35 12
2.65 - 4.00 5 12 30 12

PROCESSING SEQUENCE

- 1) EDIT - (SUM 3 POP)
- 2) DECONVOLUTION BEFORE STACK
- 3) NORMAL MOVE OUT
- 4) STACK 1200%
- 5) TV FILTER
- 6) PLAYBACK (UNFILTERED)

REFL. NO. 70 996
DATE JUNE 1988



CS 2386

40

35

30

25

20

15

10

05

00

40

35

30

25

20

15

10

05

00

112