



THE AQUAPULSE SYSTEM

LINE: ES-322

S.P. 106 to S.P. 09D

DATUM PLANE: SEA LEVEL

SOUTH EAST

M-MESA 5012 VELOCITY CHANGE

M-MESA 5016 VELOCITY CHANGE

M-MESA 5017 VELOCITY CHANGE

M-MESA 5017 VELOCITY CHANGE

M-MESA 5017 VELOCITY CHANGE

M-MESA 5017 VELOCITY CHANGE

M-MESA 5017 VELOCITY CHANGE

M-MESA 5012 VELOCITY CHANGE

M-MESA 5012 VELOCITY CHANGE

M-MESA 5016 VELOCITY CHANGE

M-MESA 5009 VELOCITY CHANGE

WATER DEPTH IN METRES: 106, 100, 94, 88, 82, 76, 70, 64, 58, 52, 46, 40, 34, 28, 22, 16, 10, 4, 03, 09D

RGIP AREA: SARDINIA-CAGLIARI

PROSPECT: ZONE "E"

WESTERN GEOPHYSICAL DIVISION OF PETROL BRITISH MILAN DIGITAL CENTER

RECORDING DATA

PARTY NO. 88
ENERGY SOURCE AQUAPULSE
FILTER 10-80 HZ
CABLE 1600 m
GEOPHONES 32 CRYSTAL ELEMENT TAPERED ARRAY
LEAD IN 550 FT
AMPLIFIER RECORD BINARY GAIN
CHARGE SIZE 4 GUNS POP
DATE SHOT APRIL 1988

PROCESSING

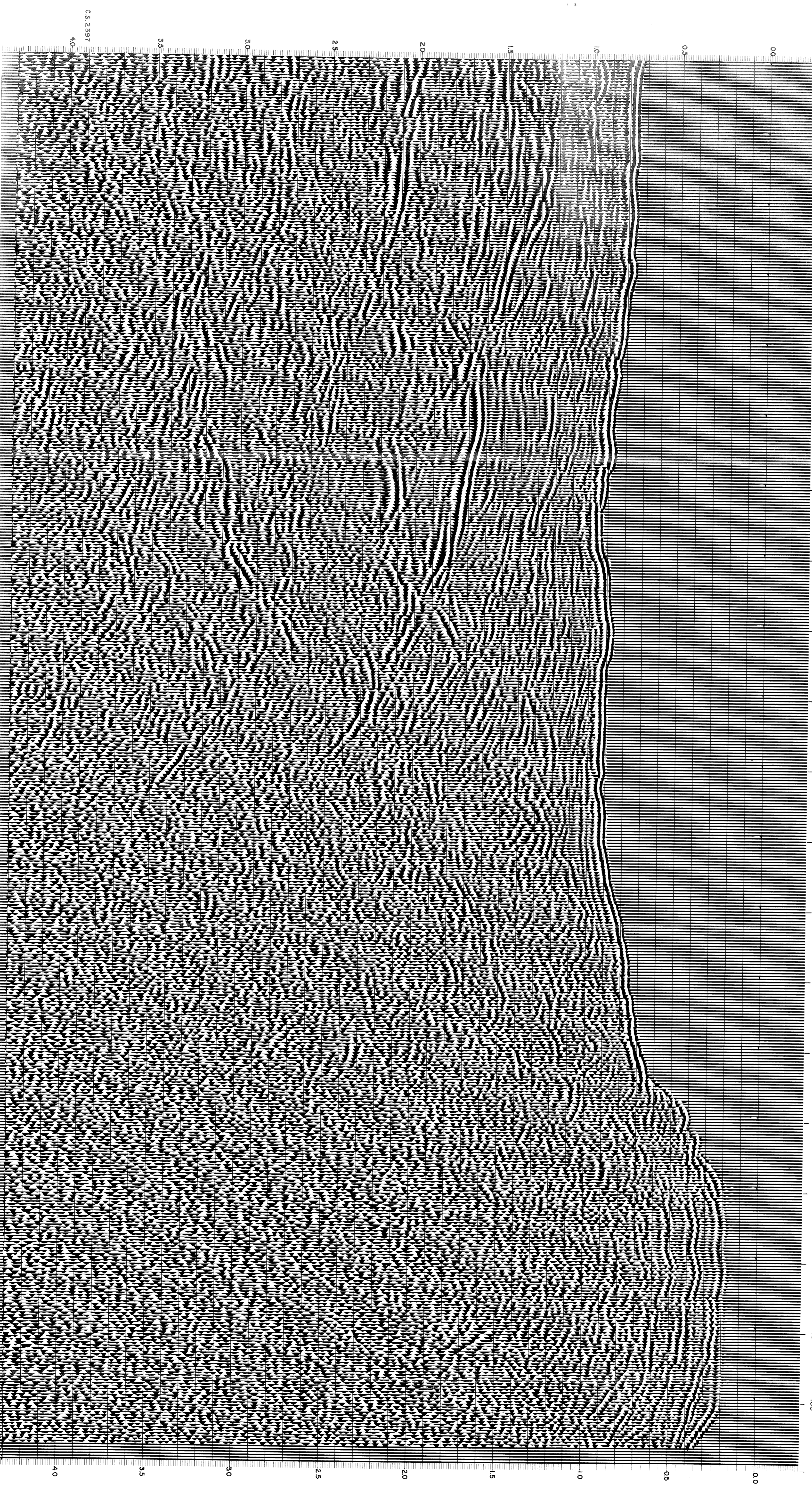
DECONVOLUTION
AUTO CORR. INT
WAX APERTURE 0-320 MS
TIME ZONE 0-4 SEC
ITERATIONS 4

INFORMATION

TIME VARIANT FILTER
TIME ZONE Hz DB OCT Hz DB OCT
0.00 - 0.975 20 18 45 12
0.975 - 1.050 15 12 45 12
1.050 - 1.450 10 40 40 12
1.450 - 2.650 10 35 35 12
2.650 - 4.00 5 12 30 12

PROCESSING SEQUENCE

1) EDIT - (SUM 3 POS)
2) DECONVOLVED BEFORE STACK
3) NORMAL MOVE OUT
4) STACK (200%)
5) FM FILTER
6) PLAYBACK (UNFILTERED)
REEL NO 70 956
DATE JUNE 1988



CS 2397

3.5

3.0

2.5

2.0

1.5

1.0

0.5

0.0

4.0

3.5

3.0

2.5

2.0

1.5

1.0

0.5

0.0

09D