



THE AQUAPULSE SYSTEM

**AGIP**

AREA: MARE TIRRENO PROSPECT: ZONE "E"

**WESTERN**  
GEOPHYSICAL  
DIVISION OF PETRO INDUSTRIES  
MILAN DIGITAL CENTER

**RECORDING DATA**

PARTY NO. 62  
ENERGY SOURCE AQUAPULSE  
FILTER 10-80 HZ  
CABLE 1800 m  
GEOPHONES 32 CRYSTAL ELEMENT  
TAPERED ARRAY  
LEAD IN 650. FT.  
AMPLIFIER RECORD BINARY GAIN  
CHARGE SIZE 4 GUNS POP  
DATE SHOT APRIL 1988

**PROCESSING INFORMATION**

SAMPLE RATE 2 ms

**DECONVOLUTION**

**DECONVOLVED BEFORE STACK**

AUTO CORR. INT. TIME VARIANT  
MAX. APERTURE 0 - 320 ms  
TIME ZONE 0 - 4 sec.  
ITERATIONS 3

**TIME VARIANT FILTER**

**TIME ZONE Hz dB OCT Hz dB OCT**

L/C H/C  
0.0 - 0.320 20 - 18 50 - 12  
0.320 - 0.620 15 - 24 45 - 24  
0.620 - 1.250 10 - 12 40 - 12  
1.250 - 4000 10 - 12 35 - 12

**PROCESSING SEQUENCE**

- 1) EDIT - (SUM 3 POPS)
- 2) DECONVOLVED BEFORE STACK
- 3) NORMAL MOVE OUT
- 4) STACK 1200 %
- 5) TV FILTER
- 6) PLAYBACK (UNFILTERED)

REFL. NO. 71929  
DATE JUNE 1988

LINE: ES-321

S.P. 172 to S.P. 82

DATUM PLANE: SEA LEVEL

M - MESA 5014

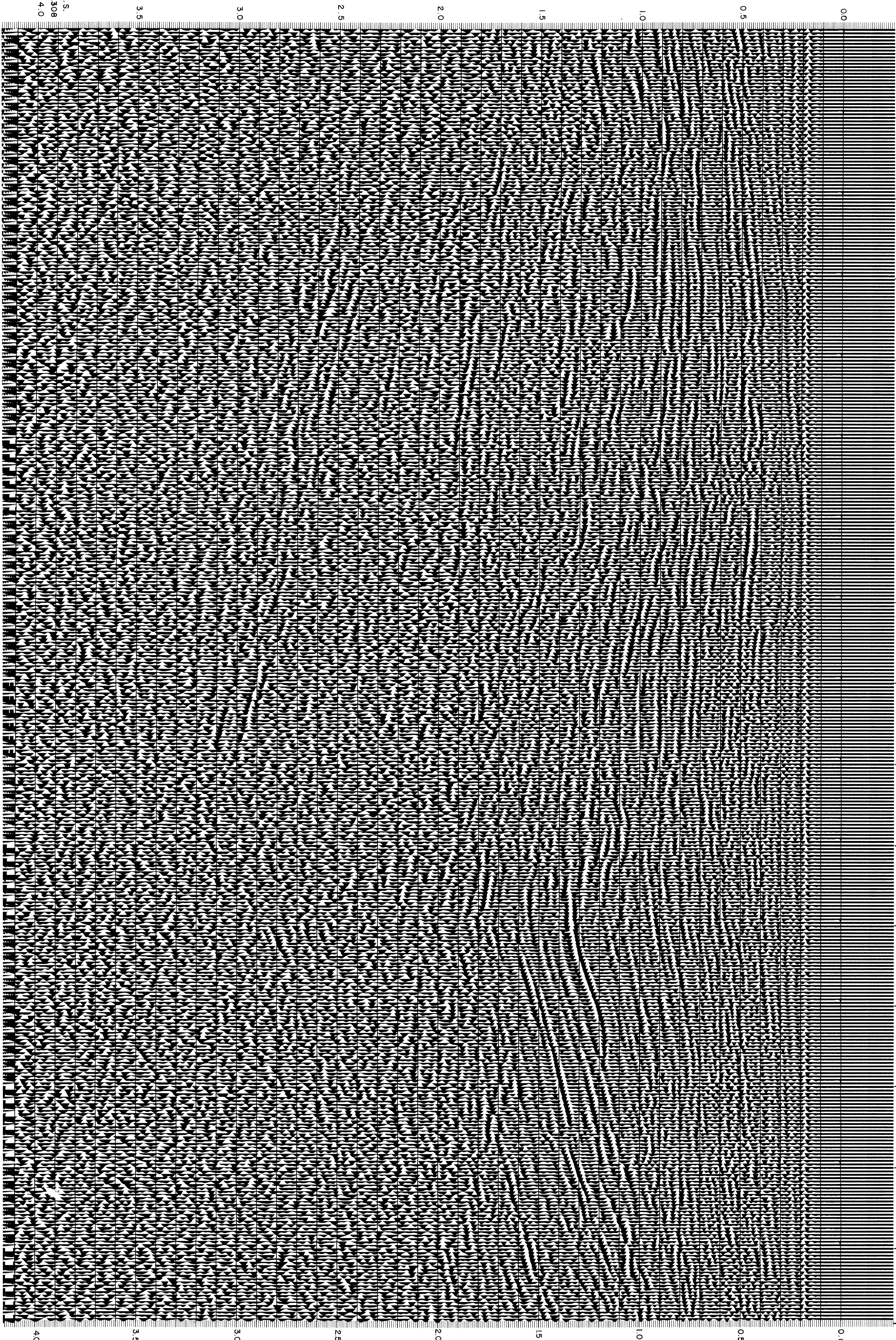
NORTH EAST

INTERSECTION LINE ES-326  
S.P. 81

VELOCITY CHANGE

M - MESA 5010

172 166 160 154 148 142 136 130 124 118 112 106 100 94 88 82  
WATER DEPTH 38 40 42 42 42 42 42 42 42 42 42 42 42 42 40 38  
IN METRES



C.S.  
2308  
4.0

3.5

3.0

2.5

2.0

1.5

1.0

0.5

0.0

4.0

3.5

3.0

2.5

2.0

1.5

1.0

0.5

0.0