



THE AQUAPULSE SYSTEM

LINE: ES-321

S.P. 76 to S.P. 09D NORTH EAST

DATUM PLANE: SEA LEVEL

INTERSECTION
LINE ES-324
S.P. 84

M - MESA 5010 VELOCITY CHANGE

M - MESA 5013

WATER DEPTH
IN METRES

76 38

70 38

64 37

58 37

52 35

46 35

40 35

34 33

28 31

22 29

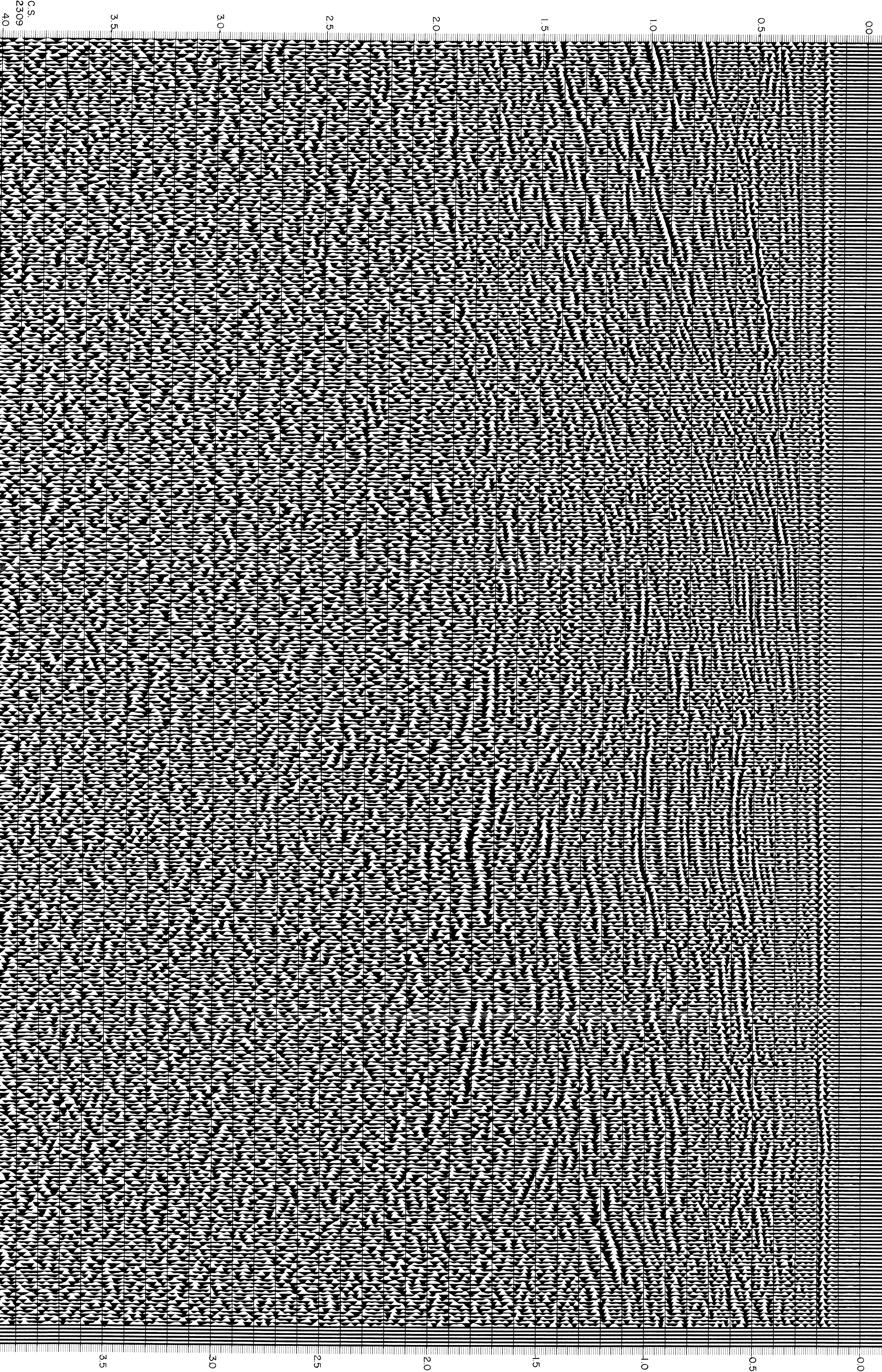
16 27

10 27

4 12

03 14

09D 1



AREA: MARE TIRRENO PROSPECT: ZONE "E"



WESTERN
GEOPHYSICAL
MILAN DIGITAL CENTER

RECORDING DATA

FACILITY NO. 82
ENERGY SOURCE AQUAPULSE
FILTER 10-80 HZ
CABLE 1600 m
GEOPHONES 32 CRYSTAL ELEMENT
TAPERED ARRAY
LEAD IN 650 FT
AMPLIFIER RECORR BINARY GAIN
CHARGE SIZE 4 GUNS POP
DATE SHOT APRIL 1968

PROCESSING INFORMATION

SAMPLE RATE 2 ms

DECONVOLUTION

DECONVOLVED BEFORE STACK

AUTO CORR INT
MAX APERTURE
TIME ZONE
ITERATIONS

TIME VARIANT FILTER

TIME VARIANT
0-320 ms
0-5 sec
3

L/C H/C
TIME ZONE Hz DB OCT Hz DB OCT
00-0320 20 - 18 50 - 12
0320-0620 15 - 24 45 - 24
0620-1250 10 - 12 40 - 12
1250-4000 10 - 12 35 - 12

PROCESSING SEQUENCE

- 1) EDIT - (SUM 3 POS)
- 2) DECONVOLVED BEFORE STACK
- 3) NORMAL MOVE OUT
- 4) STACK 1200%
- 5) TV-FILTER
- 6) PLAYBACK (UNFILTERED)

REEL NO. 71829
DATE JUNE 1968