



THE AQUAPULSE SYSTEM



AREA : SARDINIA - ORISTANO

PROSPECT : ZONE "E"

WESTERN  
GEOPHYSICAL  
DIVISION OF LITTON INDUSTRIES  
MILAN DIGITAL CENTER

LINE : ES-240

S.P. 190D to S.P. 100

DATUM PLANE : SEA LEVEL

<b>RECORDING DATA</b>		<b>PROCESSING INFORMATION</b>		<b>PROCESSING SEQUENCE</b>	
FARTY NO. 62	ENERGY SOURCE AQUAPULSE	DECONVOLUTION		1) EDIT * (SUM 3 POPS)	
FILTER 10-80 HZ	CABLE 1600 m	DECONVOLVED BEFORE STACK		2) DECONVOLVED BEFORE STACK	
GEOPHONES 32 CRYSTAL ELEMENT	TAPERED ARRAY	TIME VARIANT FILTER		3) NORMAL MOVE OUT	
LEAD IN 6.50 FT	AMPLIFIER RECORD BINARY GAIN	TIME ZONE		4) STACK (200%)	
CHARGE SIZE 4 GUNS POP	DATE SHOT APRIL 1968	L C H C		5) TV-FILTER	
		0.00 - 0.37 25 18 50 12		6) PLAYBACK (UNFILTERED)	
		0.37 - 0.75 15 12 45 12		REFL NO 72 525	
		0.75 - 1.15 10 10 40 12		DATE JULY 1968	
		1.15 - 2.10 10 12 35 12			
		2.10 - 4.00 5 6 30 6			

WEST

190D 184 178 172 166 160 154 148 142 136 130 124 118 112 106 100

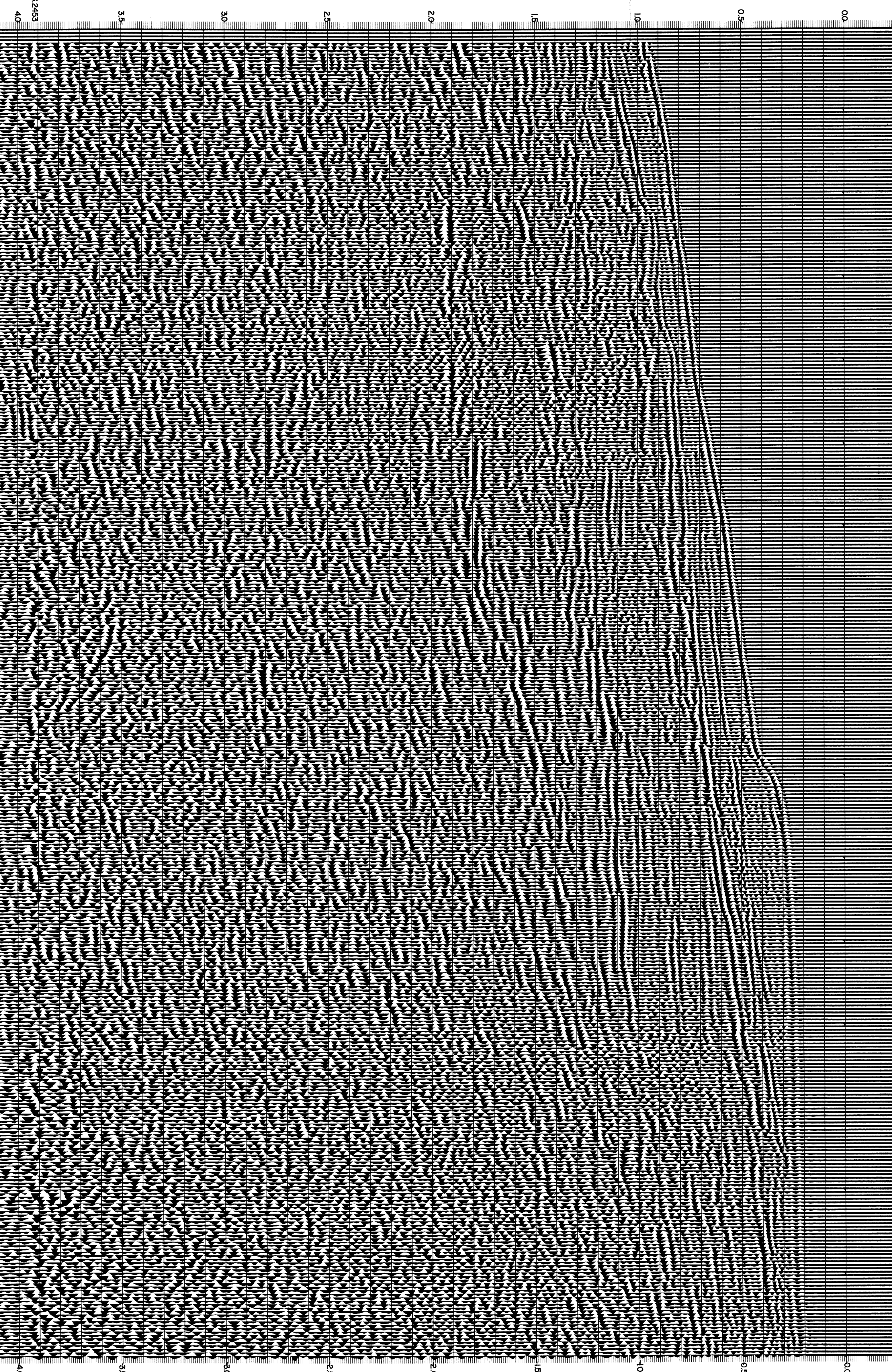
>S/2 >S/2 >S/2 481 430 375 347 311 238 166 148 141 133 128 124

VELOCITY CHANGE VELOCITY CHANGE VELOCITY CHANGE VELOCITY CHANGE VELOCITY CHANGE VELOCITY CHANGE VELOCITY CHANGE VELOCITY CHANGE VELOCITY CHANGE VELOCITY CHANGE VELOCITY CHANGE VELOCITY CHANGE VELOCITY CHANGE VELOCITY CHANGE VELOCITY CHANGE

LINE INTERSECTION IN LINE S.P. M-MESA 5016 M-MESA 5037 M-MESA 5007 M-MESA 5003 M-MESA 5032 M-MESA 5021

ES-127 377 M-MESA 5037

WATER DEPTH IN METRES



CS2453

40