



THE AQUAPULSE SYSTEM

LINE: ES-236

S.P. 151 to S.P. 37

DATUM PLANE: SEA LEVEL

M-MESA 5015 VELOCITY CHANGE

M-MESA 5011 VELOCITY CHANGE

VELOCITY CHANGE

M-MESA 5021

VELOCITY CHANGE

INTERSECTION LINE S.P.

M-MESA 5011

VELOCITY CHANGE

M-MESA 5014

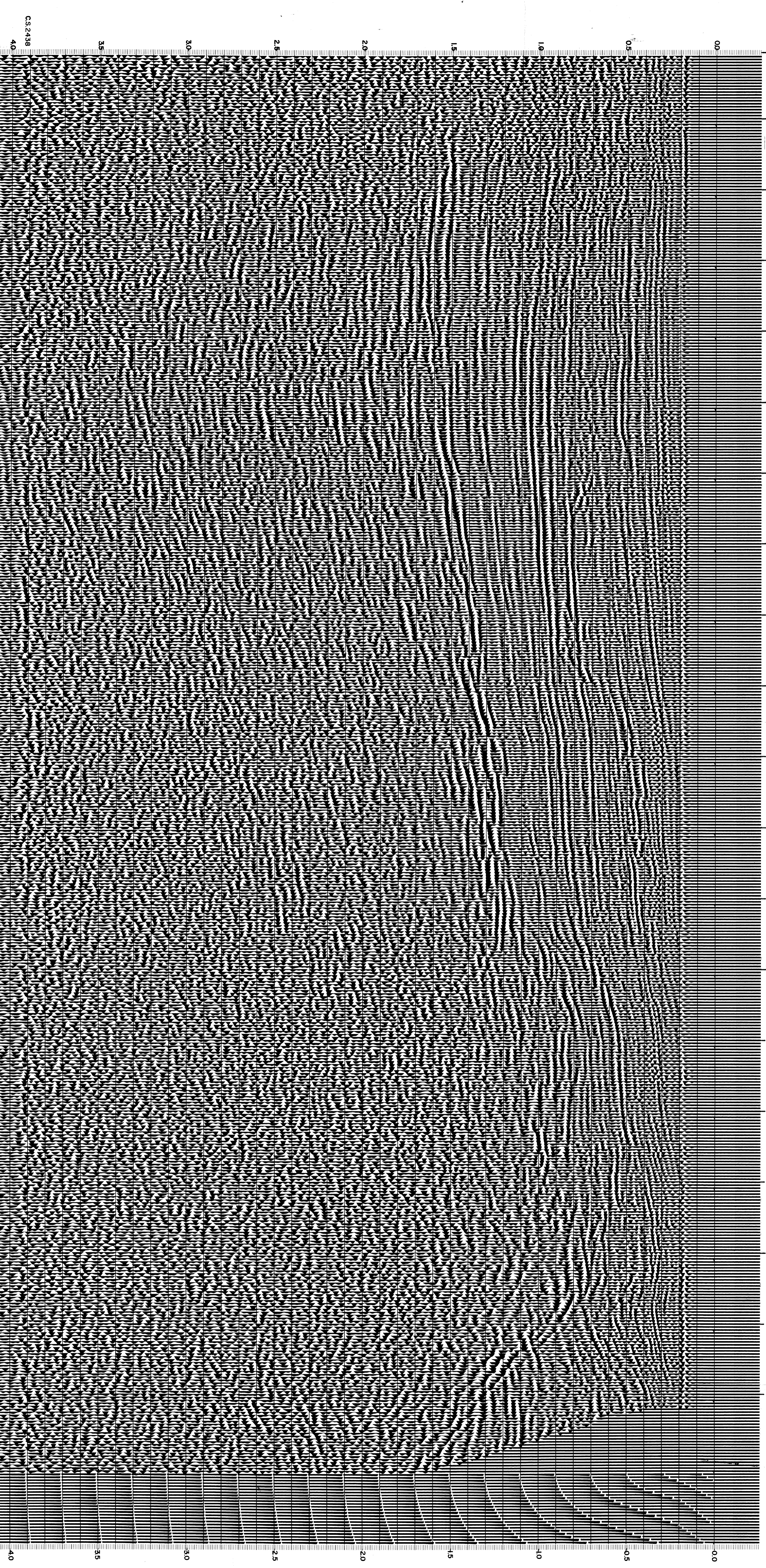
WEST

WATER DEPTH IN METRES

RGIP AREA: SARDINIA - ORISTANO PROSPECT: ZONE "E"

WESTERN G EOPHYSICAL WILLIAM DISTRICT CENTER

RECORDING DATA		PROCESSING INFORMATION		PROCESSING SEQUENCE	
PART NO. 82	AQUAPULSE	SAMPLE RATE 4 MS		1) EDIT (SLW 3 POS)	2) DECONVOLVED BEFORE STACK
ENERGY SOURCE 10-80 HZ	1600m	TIME VARIANT FILTER		3) NORMAL MOVE OUT	4) STACK (20.2%)
FILTER 10-80 HZ	1600m	L.C. H.C.		5) TV-FILTER	6) PLAYBACK (UNFILTERED)
CABLE GEOPHONES 32 CRYSTAL ELEMENT TAPERED ARRAY	600ZL	000-0.375	25	18	50
LEAD IN	600ZL	0.375-1000	15	12	45
AMPLIFIER HEDGECOCK BINARY GAIN	4 GUNS PCP	1000-1900	10	12	40
CHANGE SIZE	APRIL 88	1900-4000	10	12	35
DATE SHOT	APRIL 88				12
DECONVOLUTION		TIME ZONE		REFL NO. 72338	
DECONVOLVED BEFORE STACK		0 -4 -88		DATE JUNE 88	
AUTO CORR. NT		TIME VARIANT			
MAX. APEX-TURE		0-350ms			
ITERATIONS		0-4 -88			



CS2438