



THE AQUAPULSE SYSTEM

LINE: ES-236

S.P. 271D to S.P. 157

DATUM PLANE: SEA LEVEL

VELOCITY CHANGE

M-MESA 5006

M-MESA 5003

M-MESA 5002

M-MESA 5010

M-MESA 5020

M-MESA 5020

M-MESA 5020

M-MESA 5015

M-MESA 5015

M-MESA 5015

M-MESA 5015

M-MESA 5015

M-MESA 5015

M-MESA 5015

M-MESA 5015

M-MESA 5015

RRP		AREA : SARDINIA - ORISTANO		PROSPECT : ZONE "E"		
RECORDING DATA		PROCESSING INFORMATION		PROCESSING SEQUENCE		
PARTY NO. 82 ENERGY SOURCE AQUAPULSE FILTER 10-80 HZ CABLE 1600M GEOPHONES 32 CRYSTAL ELEMENT FABRICATED ARRAY LEAD IN 6.50 FT. AMPLIFIER RECORDER BINARY GAIN CHARGE SIZE 4 GUNS POP DATE SHOT APRIL 1988		DECONVOLUTION <small>SAMPLE RATE 4 MS</small> DECONVOLVED BEFORE STACK AUTO CORR. INT. TIME VARIANT WAVE APERTURE 0-360 MS TIME ZONE 0-4 SEC ITERATIONS 4		TIME VARIANT FILTER TIME ZONE Hz DB OCT Hz DB OCT 0.00-0.375 25 18 60 12 0.375-1.05 15 12 45 12 1.05-1.90 10 12 40 12 1.90-4.00 10 12 35 12		1) EDIT - (SUN 3 POP-5) 2) DECONVOLVED BEFORE STACK 3) NORMAL MOVE CUT 4) STACK (200%) 5) TV-FILTER 6) PLAYBACK (UN-FILTERED)
INTERSECTION LINE S.P. 236 INTERSECTION LINE S.P. 236		INTERSECTION LINE S.P. 236 INTERSECTION LINE S.P. 236		REF. NO. 72 338 DATE JULY 19 88		

WESTERN GEOPHYSICAL MILAN DIGITAL CENTER

WEST

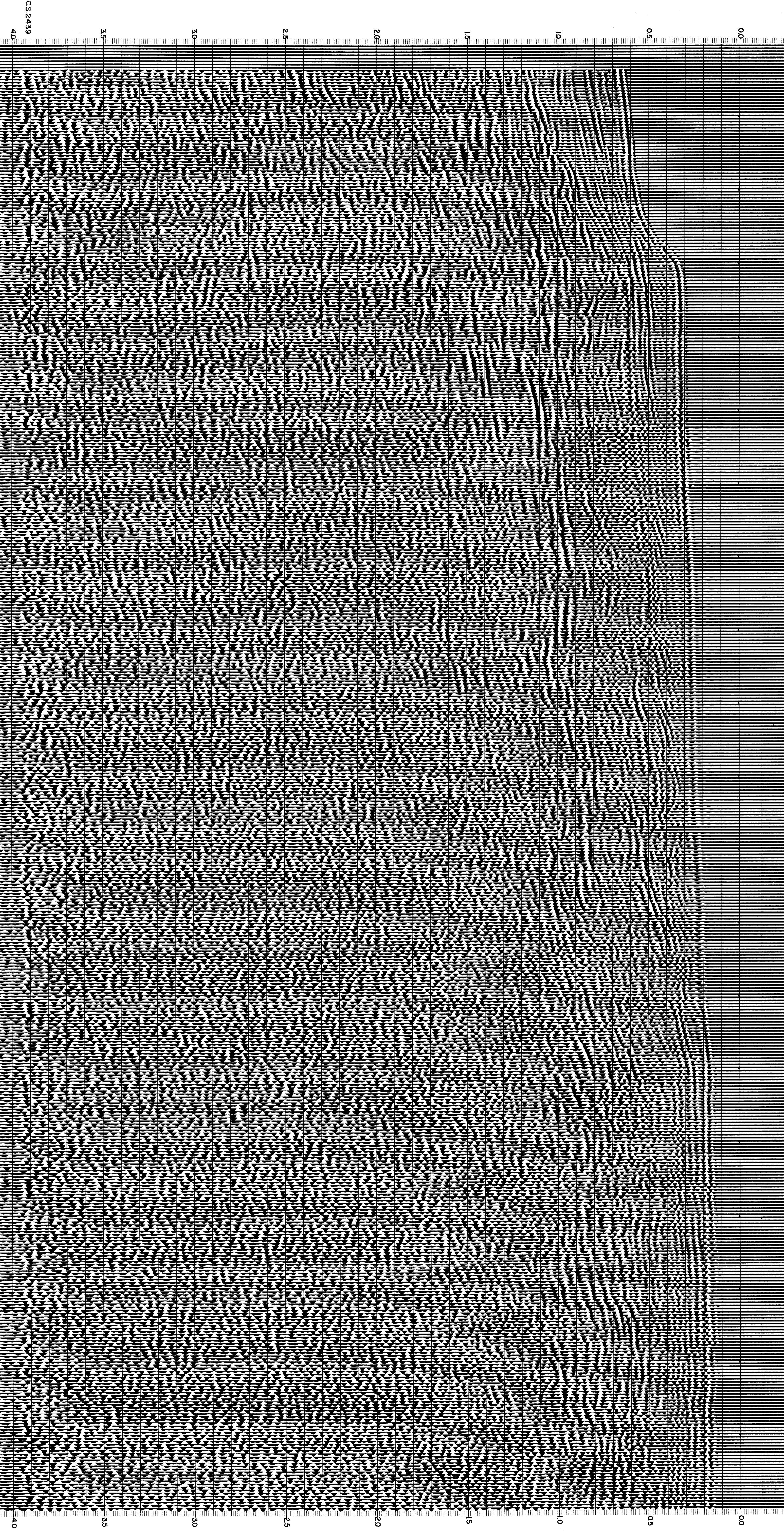
INTERSECTION LINE S.P. ES-129 236

271D 265 259 253 247 241 235 229 223 217 211 205 199 193 187 181 175 169 163 157

402 394 282 190 183 172 155 148 146 137 128 110 101 79 66 62 55 55 57

00 0.5 1.0 1.5 2.0 2.5 3.0 3.5 4.0

00 0.5 1.0 1.5 2.0 2.5 3.0 3.5 4.0



CS 2439