



THE AQUAPULSE SYSTEM

LINE: ES-232

S.P. 102 to S.P.30

DATUM PLANE: SEA LEVEL

VELOCITY CHANGE

INTERSECTION
LINE S.P.
ES-229 74

MAMESA 5015

MAMESA 5025

INTERSECTION
LINE S.P.
ES-131 69

RGIP

AREA: SARDINIA-ORISTANO

PROSPECT: ZONE "E"

WESTERN
GEOPHYSICAL
DIVISION OF PETROL INDUSTRIES
MILAN DIGITAL CENTER

RECORDING DATA

PARTY NO. 62
ENERGY SOURCE AQUAPULSE
FILTER 10-80 HZ
CABLE 1600 m
GEOPHONES 32 CRYSTAL ELEMENT
TAPERED ARRAY
LEAD IN 650 FT
AMPLIFIER REDCOR BINARY GAIN
CHARGE SIZE 4 GUNS POP
DATE SHOT APRIL 1988

PROCESSING INFORMATION

SAMPLE RATE 2 ms

DECONVOLUTION

DECONVOLVED BEFORE STACK

AUTO CORR INT TIME VARIANT
MAX APERTURE 0-360 ms
TIME ZONE 0-4 sec
ITERATIONS 4

TIME VARIANT FILTER

TIME ZONE Hz DB OCT Hz DB OCT

	LC	HC
000 - 0.375	25	18 50 12
0.375 - 0.60	15	12 45 12
0.60 - 1.00	10	12 40 12
1.00 - 4.00	10	12 35 12

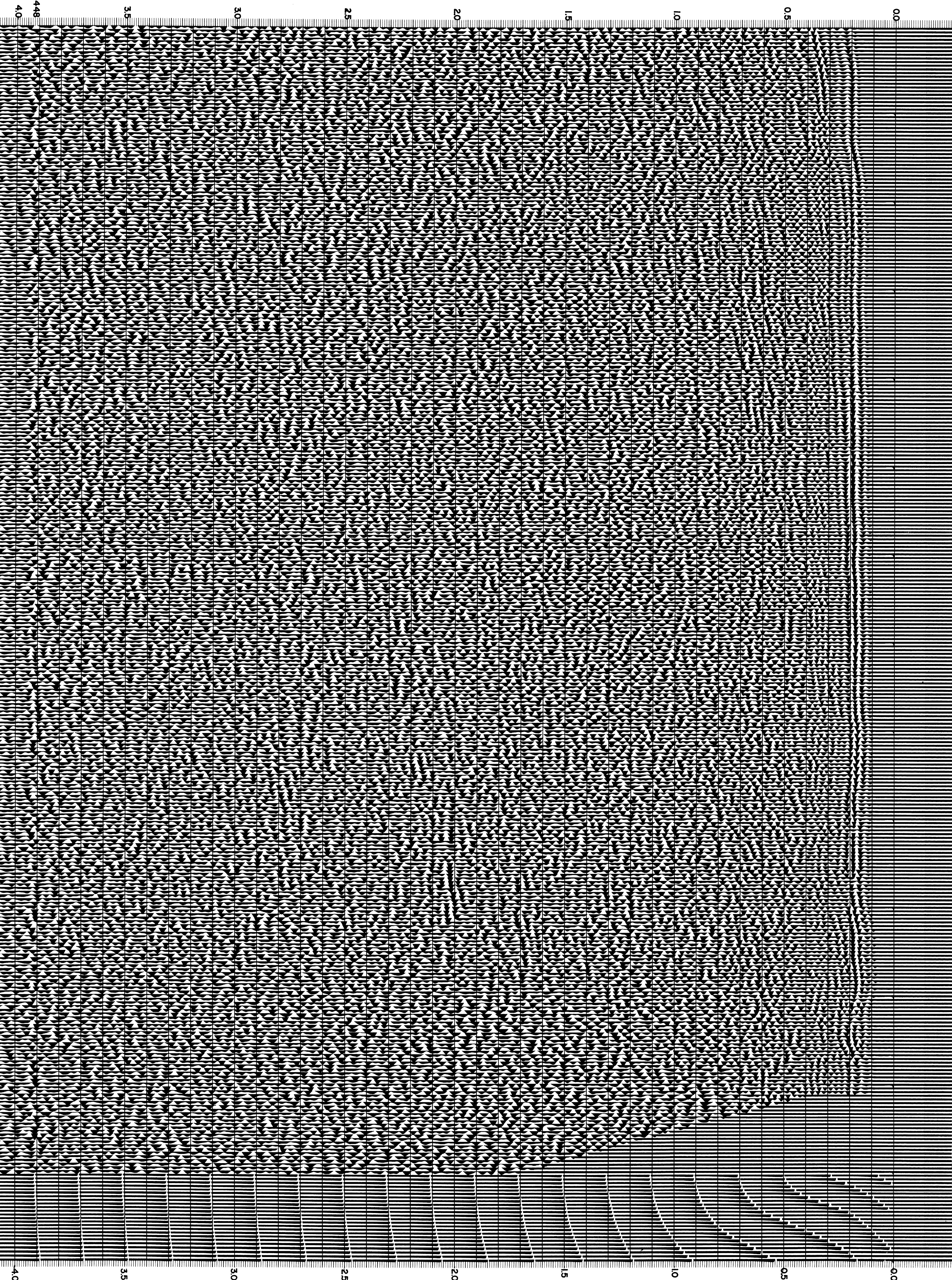
PROCESSING SEQUENCE

- 1) EDIT - (SUM 3 POPs)
- 2) DECONVOLVED BEFORE STACK
- 3) NORMAL MOVE OUT
- 4) STACK 1200%
- 5) TV-FILTER
- 6) PLAYBACK (UNFILTERED)

REFL NO 72 501
DATE JULY 1988

WEST

102 96 90 84 78 72 66 60 54 48 42 36 30 WATER DEPTH
119 97 66 59 53 49 46 42 38 44 42 33 29 IN METRES



CS2448

40

35

30

25

20

15

10

0.5

0.0

35

30

25

20

15

10

0.5

0.0

40